

Chord Type 0 2 3 5 6 7 8 9 10 11 in All Keys

Treble Clef, 10 Notes, Diatonic Scale Degrees: 1234456677

Stanley Jordan

Root = 0 (C)

0:0 0:2 0:3 0:5 0:6 0:7 0:8 0:9 0:10 0:11



Root = 1 (C#)

1:0 1:2 1:3 1:5 1:6 1:7 1:8 1:9 1:10 1:11



Root = 1 (Db)

1:0 1:2 1:3 1:5 1:6 1:7 1:8 1:9 1:10 1:11



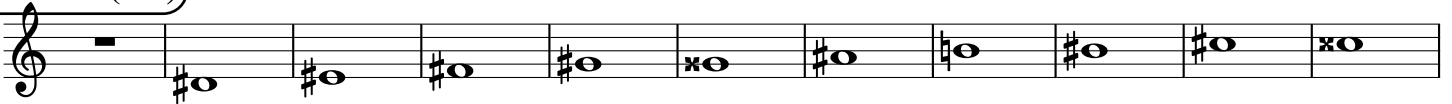
Root = 2 (D)

2:0 2:2 2:3 2:5 2:6 2:7 2:8 2:9 2:10 2:11



Root = 3 (D#)

3:0 3:2 3:3 3:5 3:6 3:7 3:8 3:9 3:10 3:11



Root = 3 (Eb)

3:0 3:2 3:3 3:5 3:6 3:7 3:8 3:9 3:10 3:11



Root = 4 (E)

4:0 4:2 4:3 4:5 4:6 4:7 4:8 4:9 4:10 4:11



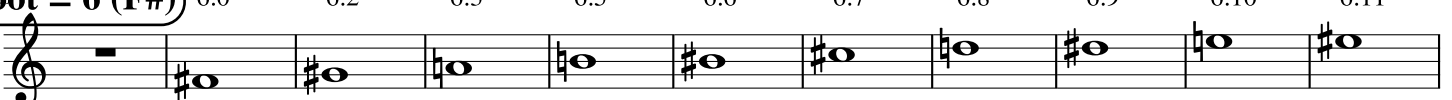
Root = 5 (F)

5:0 5:2 5:3 5:5 5:6 5:7 5:8 5:9 5:10 5:11



Root = 6 (F#)

6:0 6:2 6:3 6:5 6:6 6:7 6:8 6:9 6:10 6:11



Root = 6 (Gb) 6:0 6:2 6:3 6:5 6:6 6:7 6:8 6:9 6:10 6:11

A musical staff in treble clef showing the notes for the 6th root (Gb). The notes are: 6:0 (rest), 6:2 (Bb), 6:3 (Bb), 6:5 (Bb), 6:6 (Bb), 6:7 (Bb), 6:8 (Bb), 6:9 (Bb), 6:10 (Bb), and 6:11 (Bb).

Root = 7 (G) 7:0 7:2 7:3 7:5 7:6 7:7 7:8 7:9 7:10 7:11

A musical staff in treble clef showing the notes for the 7th root (G). The notes are: 7:0 (rest), 7:2 (B), 7:3 (B), 7:5 (B), 7:6 (B), 7:7 (B), 7:8 (B), 7:9 (B), 7:10 (B), and 7:11 (B).

Root = 8 (G#) 8:0 8:2 8:3 8:5 8:6 8:7 8:8 8:9 8:10 8:11

A musical staff in treble clef showing the notes for the 8th root (G#). The notes are: 8:0 (rest), 8:2 (B#), 8:3 (B#), 8:5 (B#), 8:6 (B#), 8:7 (B#), 8:8 (B#), 8:9 (B#), 8:10 (B#), and 8:11 (B#).

Root = 8 (Ab) 8:0 8:2 8:3 8:5 8:6 8:7 8:8 8:9 8:10 8:11

A musical staff in treble clef showing the notes for the 8th root (Ab). The notes are: 8:0 (rest), 8:2 (Bb), 8:3 (Bb), 8:5 (Bb), 8:6 (Bb), 8:7 (Bb), 8:8 (Bb), 8:9 (Bb), 8:10 (Bb), and 8:11 (Bb).

Root = 9 (A) 9:0 9:2 9:3 9:5 9:6 9:7 9:8 9:9 9:10 9:11

A musical staff in treble clef showing the notes for the 9th root (A). The notes are: 9:0 (rest), 9:2 (B), 9:3 (B), 9:5 (B), 9:6 (B), 9:7 (B), 9:8 (B), 9:9 (B), 9:10 (B), and 9:11 (B).

Root = 10 (A#) 10:0 10:2 10:3 10:5 10:6 10:7 10:8 10:9 10:10 10:11

A musical staff in treble clef showing the notes for the 10th root (A#). The notes are: 10:0 (rest), 10:2 (B#), 10:3 (B#), 10:5 (B#), 10:6 (B#), 10:7 (B#), 10:8 (B#), 10:9 (B#), 10:10 (B#), and 10:11 (B#).

Root = 10 (Bb) 10:0 10:2 10:3 10:5 10:6 10:7 10:8 10:9 10:10 10:11

A musical staff in treble clef showing the notes for the 10th root (Bb). The notes are: 10:0 (rest), 10:2 (Bb), 10:3 (Bb), 10:5 (Bb), 10:6 (Bb), 10:7 (Bb), 10:8 (Bb), 10:9 (Bb), 10:10 (Bb), and 10:11 (Bb).

Root = 11 (B) 11:0 11:2 11:3 11:5 11:6 11:7 11:8 11:9 11:10 11:11

A musical staff in treble clef showing the notes for the 11th root (B). The notes are: 11:0 (rest), 11:2 (B), 11:3 (B), 11:5 (B), 11:6 (B), 11:7 (B), 11:8 (B), 11:9 (B), 11:10 (B), and 11:11 (B).