

Chord Type 0 1 2 4 6 7 8 9 10 11 in All Keys

Treble Clef, 10 Notes, Diatonic Scale Degrees: 1223456677

Stanley Jordan

Root = 0 (C)

0:0 0:1 0:2 0:4 0:6 0:7 0:8 0:9 0:10 0:11



Root = 1 (C#)

1:0 1:1 1:2 1:4 1:6 1:7 1:8 1:9 1:10 1:11



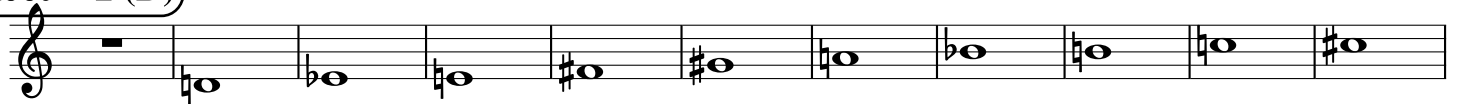
Root = 1 (Db)

1:0 1:1 1:2 1:4 1:6 1:7 1:8 1:9 1:10 1:11



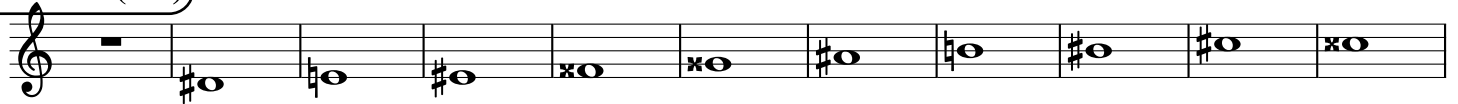
Root = 2 (D)

2:0 2:1 2:2 2:4 2:6 2:7 2:8 2:9 2:10 2:11



Root = 3 (D#)

3:0 3:1 3:2 3:4 3:6 3:7 3:8 3:9 3:10 3:11



Root = 3 (Eb)

3:0 3:1 3:2 3:4 3:6 3:7 3:8 3:9 3:10 3:11



Root = 4 (E)

4:0 4:1 4:2 4:4 4:6 4:7 4:8 4:9 4:10 4:11



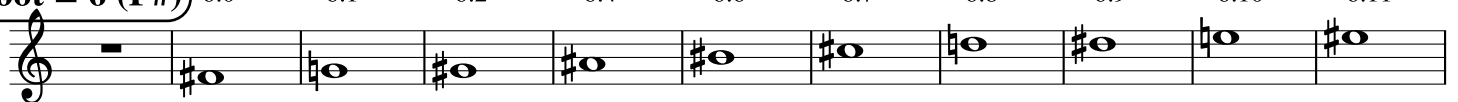
Root = 5 (F)

5:0 5:1 5:2 5:4 5:6 5:7 5:8 5:9 5:10 5:11



Root = 6 (F#)

6:0 6:1 6:2 6:4 6:6 6:7 6:8 6:9 6:10 6:11



Root = 6 (Gb) 6:0 6:1 6:2 6:4 6:6 6:7 6:8 6:9 6:10 6:11

A musical staff in treble clef showing the notes for the 6th harmonic series starting on Gb. The notes are: 6:0 (rest), 6:1 (F), 6:2 (Eb), 6:4 (Eb), 6:6 (G), 6:7 (F), 6:8 (Eb), 6:9 (Eb), 6:10 (G), and 6:11 (Ab).

Root = 7 (G) 7:0 7:1 7:2 7:4 7:6 7:7 7:8 7:9 7:10 7:11

A musical staff in treble clef showing the notes for the 7th harmonic series starting on G. The notes are: 7:0 (rest), 7:1 (F), 7:2 (Eb), 7:4 (Eb), 7:6 (G), 7:7 (G), 7:8 (F), 7:9 (Eb), 7:10 (Eb), and 7:11 (Ab).

Root = 8 (G#) 8:0 8:1 8:2 8:4 8:6 8:7 8:8 8:9 8:10 8:11

A musical staff in treble clef showing the notes for the 8th harmonic series starting on G#. The notes are: 8:0 (rest), 8:1 (F), 8:2 (Eb), 8:4 (Eb), 8:6 (G), 8:7 (G), 8:8 (F), 8:9 (Eb), 8:10 (Eb), and 8:11 (Ab).

Root = 8 (Ab) 8:0 8:1 8:2 8:4 8:6 8:7 8:8 8:9 8:10 8:11

A musical staff in treble clef showing the notes for the 8th harmonic series starting on Ab. The notes are: 8:0 (rest), 8:1 (F), 8:2 (Eb), 8:4 (Eb), 8:6 (G), 8:7 (G), 8:8 (F), 8:9 (Eb), 8:10 (Eb), and 8:11 (Ab).

Root = 9 (A) 9:0 9:1 9:2 9:4 9:6 9:7 9:8 9:9 9:10 9:11

A musical staff in treble clef showing the notes for the 9th harmonic series starting on A. The notes are: 9:0 (rest), 9:1 (F), 9:2 (Eb), 9:4 (Eb), 9:6 (G), 9:7 (G), 9:8 (F), 9:9 (Eb), 9:10 (Eb), and 9:11 (Ab).

Root = 10 (A#) 10:0 10:1 10:2 10:4 10:6 10:7 10:8 10:9 10:10 10:11

A musical staff in treble clef showing the notes for the 10th harmonic series starting on A#. The notes are: 10:0 (rest), 10:1 (F), 10:2 (Eb), 10:4 (Eb), 10:6 (G), 10:7 (G), 10:8 (F), 10:9 (Eb), 10:10 (Eb), and 10:11 (Ab).

Root = 10 (Bb) 10:0 10:1 10:2 10:4 10:6 10:7 10:8 10:9 10:10 10:11

A musical staff in treble clef showing the notes for the 10th harmonic series starting on Bb. The notes are: 10:0 (rest), 10:1 (F), 10:2 (Eb), 10:4 (Eb), 10:6 (G), 10:7 (G), 10:8 (F), 10:9 (Eb), 10:10 (Eb), and 10:11 (Ab).

Root = 11 (B) 11:0 11:1 11:2 11:4 11:6 11:7 11:8 11:9 11:10 11:11

A musical staff in treble clef showing the notes for the 11th harmonic series starting on B. The notes are: 11:0 (rest), 11:1 (F), 11:2 (Eb), 11:4 (Eb), 11:6 (G), 11:7 (G), 11:8 (F), 11:9 (Eb), 11:10 (Eb), and 11:11 (Ab).