

# Chord Type 0 1 2 3 4 6 7 9 10 11 in All Keys

Treble Clef, 10 Notes, Diatonic Scale Degrees: 1223345667

Stanley Jordan

Root = 0 (C)

0:0 0:1 0:2 0:3 0:4 0:6 0:7 0:9 0:10 0:11



Root = 1 (C#)

1:0 1:1 1:2 1:3 1:4 1:6 1:7 1:9 1:10 1:11



Root = 1 (Db)

1:0 1:1 1:2 1:3 1:4 1:6 1:7 1:9 1:10 1:11



Root = 2 (D)

2:0 2:1 2:2 2:3 2:4 2:6 2:7 2:9 2:10 2:11



Root = 3 (D#)

3:0 3:1 3:2 3:3 3:4 3:6 3:7 3:9 3:10 3:11



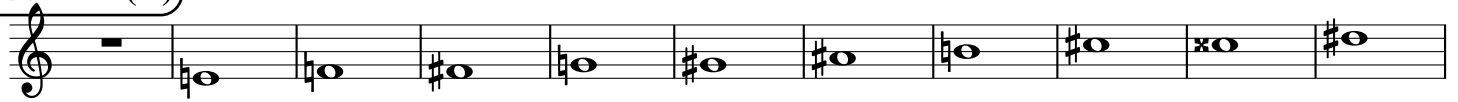
Root = 3 (Eb)

3:0 3:1 3:2 3:3 3:4 3:6 3:7 3:9 3:10 3:11



Root = 4 (E)

4:0 4:1 4:2 4:3 4:4 4:6 4:7 4:9 4:10 4:11



Root = 5 (F)

5:0 5:1 5:2 5:3 5:4 5:6 5:7 5:9 5:10 5:11



Root = 6 (F#)

6:0 6:1 6:2 6:3 6:4 6:6 6:7 6:9 6:10 6:11



**Root = 6 (Gb)** 6:0 6:1 6:2 6:3 6:4 6:6 6:7 6:9 6:10 6:11

A musical staff in treble clef showing the notes for the 6th root (Gb). The notes are: 6:0 (rest), 6:1 (Bb), 6:2 (Bb), 6:3 (Bb), 6:4 (Bb), 6:6 (Ab), 6:7 (Ab), 6:9 (Ab), 6:10 (Ab), 6:11 (Ab).

**Root = 7 (G)** 7:0 7:1 7:2 7:3 7:4 7:6 7:7 7:9 7:10 7:11

A musical staff in treble clef showing the notes for the 7th root (G). The notes are: 7:0 (rest), 7:1 (Bb), 7:2 (Bb), 7:3 (Bb), 7:4 (Bb), 7:6 (Ab), 7:7 (Ab), 7:9 (Ab), 7:10 (Ab), 7:11 (Ab).

**Root = 8 (G#)** 8:0 8:1 8:2 8:3 8:4 8:6 8:7 8:9 8:10 8:11

A musical staff in treble clef showing the notes for the 8th root (G#). The notes are: 8:0 (rest), 8:1 (Bb), 8:2 (Bb), 8:3 (Bb), 8:4 (Bb), 8:6 (Ab), 8:7 (Ab), 8:9 (Ab), 8:10 (Ab), 8:11 (Ab).

**Root = 8 (Ab)** 8:0 8:1 8:2 8:3 8:4 8:6 8:7 8:9 8:10 8:11

A musical staff in treble clef showing the notes for the 8th root (Ab). The notes are: 8:0 (rest), 8:1 (Bb), 8:2 (Bb), 8:3 (Bb), 8:4 (Bb), 8:6 (Ab), 8:7 (Ab), 8:9 (Ab), 8:10 (Ab), 8:11 (Ab).

**Root = 9 (A)** 9:0 9:1 9:2 9:3 9:4 9:6 9:7 9:9 9:10 9:11

A musical staff in treble clef showing the notes for the 9th root (A). The notes are: 9:0 (rest), 9:1 (Bb), 9:2 (Bb), 9:3 (Bb), 9:4 (Bb), 9:6 (Ab), 9:7 (Ab), 9:9 (Ab), 9:10 (Ab), 9:11 (Ab).

**Root = 10 (A#)** 10:0 10:1 10:2 10:3 10:4 10:6 10:7 10:9 10:10 10:11

A musical staff in treble clef showing the notes for the 10th root (A#). The notes are: 10:0 (rest), 10:1 (Bb), 10:2 (Bb), 10:3 (Bb), 10:4 (Bb), 10:6 (Ab), 10:7 (Ab), 10:9 (Ab), 10:10 (Ab), 10:11 (Ab).

**Root = 10 (Bb)** 10:0 10:1 10:2 10:3 10:4 10:6 10:7 10:9 10:10 10:11

A musical staff in treble clef showing the notes for the 10th root (Bb). The notes are: 10:0 (rest), 10:1 (Bb), 10:2 (Bb), 10:3 (Bb), 10:4 (Bb), 10:6 (Ab), 10:7 (Ab), 10:9 (Ab), 10:10 (Ab), 10:11 (Ab).

**Root = 11 (B)** 11:0 11:1 11:2 11:3 11:4 11:6 11:7 11:9 11:10 11:11

A musical staff in treble clef showing the notes for the 11th root (B). The notes are: 11:0 (rest), 11:1 (Bb), 11:2 (Bb), 11:3 (Bb), 11:4 (Bb), 11:6 (Ab), 11:7 (Ab), 11:9 (Ab), 11:10 (Ab), 11:11 (Ab).