

Chord Type 0 1 3 6 7 8 9 10 in All Keys

Treble Clef, 8 Notes, Diatonic Scale Degrees: 12345667

Stanley Jordan

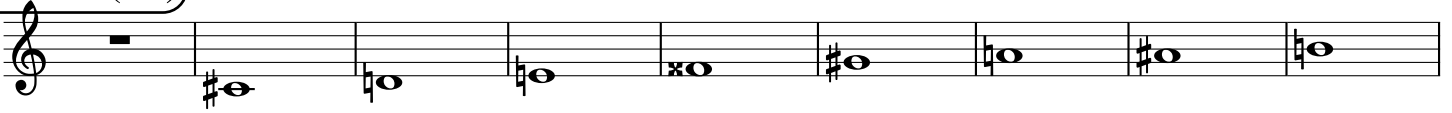
Root = 0 (C)

0:0 0:1 0:3 0:6 0:7 0:8 0:9 0:10



Root = 1 (C#)

1:0 1:1 1:3 1:6 1:7 1:8 1:9 1:10



Root = 1 (Db)

1:0 1:1 1:3 1:6 1:7 1:8 1:9 1:10



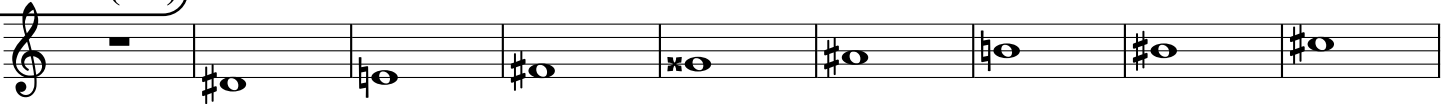
Root = 2 (D)

2:0 2:1 2:3 2:6 2:7 2:8 2:9 2:10



Root = 3 (D#)

3:0 3:1 3:3 3:6 3:7 3:8 3:9 3:10



Root = 3 (Eb)

3:0 3:1 3:3 3:6 3:7 3:8 3:9 3:10



Root = 4 (E)

4:0 4:1 4:3 4:6 4:7 4:8 4:9 4:10



Root = 5 (F)

5:0 5:1 5:3 5:6 5:7 5:8 5:9 5:10



Root = 6 (F#)

6:0 6:1 6:3 6:6 6:7 6:8 6:9 6:10



Root = 6 (Gb)

6:0 6:1 6:3 6:6 6:7 6:8 6:9 6:10

A musical staff in treble clef showing notes for ratios 6:0 to 6:10. The notes are: 6:0 (rest), 6:1 (Bb), 6:3 (Bb), 6:6 (Bb), 6:7 (Bb), 6:8 (Bb), 6:9 (Bb), and 6:10 (Bb).

Root = 7 (G)

7:0 7:1 7:3 7:6 7:7 7:8 7:9 7:10

A musical staff in treble clef showing notes for ratios 7:0 to 7:10. The notes are: 7:0 (rest), 7:1 (B), 7:3 (B), 7:6 (B), 7:7 (B), 7:8 (B), 7:9 (B), and 7:10 (B).

Root = 8 (G#)

8:0 8:1 8:3 8:6 8:7 8:8 8:9 8:10

A musical staff in treble clef showing notes for ratios 8:0 to 8:10. The notes are: 8:0 (rest), 8:1 (G#), 8:3 (G#), 8:6 (G#), 8:7 (G#), 8:8 (G#), 8:9 (G#), and 8:10 (G#).

Root = 8 (Ab)

8:0 8:1 8:3 8:6 8:7 8:8 8:9 8:10

A musical staff in treble clef showing notes for ratios 8:0 to 8:10. The notes are: 8:0 (rest), 8:1 (Ab), 8:3 (Ab), 8:6 (Ab), 8:7 (Ab), 8:8 (Ab), 8:9 (Ab), and 8:10 (Ab).

Root = 9 (A)

9:0 9:1 9:3 9:6 9:7 9:8 9:9 9:10

A musical staff in treble clef showing notes for ratios 9:0 to 9:10. The notes are: 9:0 (rest), 9:1 (A), 9:3 (A), 9:6 (A), 9:7 (A), 9:8 (A), 9:9 (A), and 9:10 (A).

Root = 10 (A#)

10:0 10:1 10:3 10:6 10:7 10:8 10:9 10:10

A musical staff in treble clef showing notes for ratios 10:0 to 10:10. The notes are: 10:0 (rest), 10:1 (A#), 10:3 (A#), 10:6 (A#), 10:7 (A#), 10:8 (A#), 10:9 (A#), and 10:10 (A#).

Root = 10 (Bb)

10:0 10:1 10:3 10:6 10:7 10:8 10:9 10:10

A musical staff in treble clef showing notes for ratios 10:0 to 10:10. The notes are: 10:0 (rest), 10:1 (Bb), 10:3 (Bb), 10:6 (Bb), 10:7 (Bb), 10:8 (Bb), 10:9 (Bb), and 10:10 (Bb).

Root = 11 (B)

11:0 11:1 11:3 11:6 11:7 11:8 11:9 11:10

A musical staff in treble clef showing notes for ratios 11:0 to 11:10. The notes are: 11:0 (rest), 11:1 (B), 11:3 (B), 11:6 (B), 11:7 (B), 11:8 (B), 11:9 (B), and 11:10 (B).