

Chord Type 0 1 2 5 6 7 8 9 in All Keys

Treble Clef, 8 Notes, Diamorphic Scale Degrees:12244566

Stanley Jordan

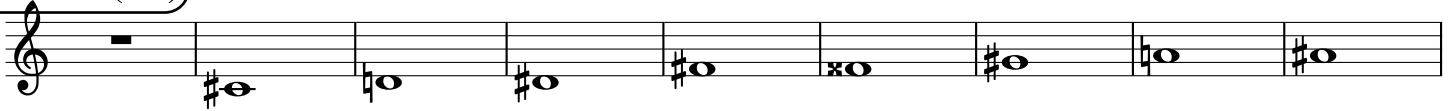
Root = 0 (C)

0:0 0:1 0:2 0:5 0:6 0:7 0:8 0:9



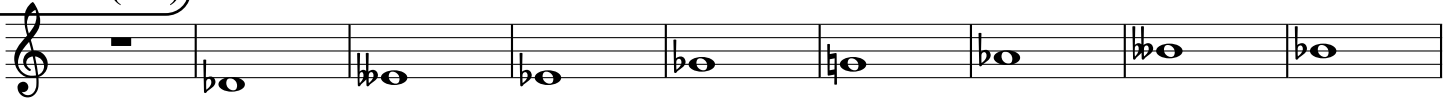
Root = 1 (C#)

1:0 1:1 1:2 1:5 1:6 1:7 1:8 1:9



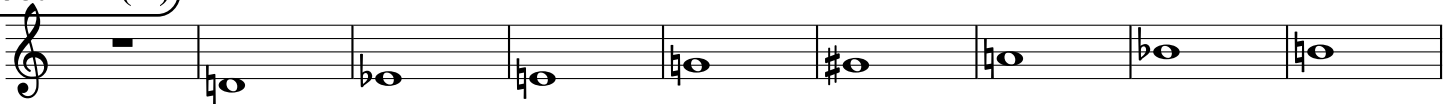
Root = 1 (Db)

1:0 1:1 1:2 1:5 1:6 1:7 1:8 1:9



Root = 2 (D)

2:0 2:1 2:2 2:5 2:6 2:7 2:8 2:9



Root = 3 (D#)

3:0 3:1 3:2 3:5 3:6 3:7 3:8 3:9



Root = 3 (Eb)

3:0 3:1 3:2 3:5 3:6 3:7 3:8 3:9



Root = 4 (E)

4:0 4:1 4:2 4:5 4:6 4:7 4:8 4:9



Root = 5 (F)

5:0 5:1 5:2 5:5 5:6 5:7 5:8 5:9



Root = 6 (F#)

6:0 6:1 6:2 6:5 6:6 6:7 6:8 6:9



Root = 6 (Gb)

6:0 6:1 6:2 6:5 6:6 6:7 6:8 6:9

A musical staff in treble clef with a key signature of one flat (Bb). The notes are: 6:0 (rest), 6:1 (Bb), 6:2 (Bb), 6:5 (Bb), 6:6 (Bb), 6:7 (Bb), 6:8 (Bb), and 6:9 (Bb).

Root = 7 (G)

7:0 7:1 7:2 7:5 7:6 7:7 7:8 7:9

A musical staff in treble clef with a key signature of one sharp (F#). The notes are: 7:0 (rest), 7:1 (G), 7:2 (G), 7:5 (G), 7:6 (G), 7:7 (G), 7:8 (G), and 7:9 (G).

Root = 8 (G#)

8:0 8:1 8:2 8:5 8:6 8:7 8:8 8:9

A musical staff in treble clef with a key signature of two sharps (F#C#). The notes are: 8:0 (rest), 8:1 (G#), 8:2 (G#), 8:5 (G#), 8:6 (G#), 8:7 (G#), 8:8 (G#), and 8:9 (G#).

Root = 8 (Ab)

8:0 8:1 8:2 8:5 8:6 8:7 8:8 8:9

A musical staff in treble clef with a key signature of two flats (BbEb). The notes are: 8:0 (rest), 8:1 (Ab), 8:2 (Ab), 8:5 (Ab), 8:6 (Ab), 8:7 (Ab), 8:8 (Ab), and 8:9 (Ab).

Root = 9 (A)

9:0 9:1 9:2 9:5 9:6 9:7 9:8 9:9

A musical staff in treble clef with a key signature of no sharps or flats (C). The notes are: 9:0 (rest), 9:1 (A), 9:2 (A), 9:5 (A), 9:6 (A), 9:7 (A), 9:8 (A), and 9:9 (A).

Root = 10 (A#)

10:0 10:1 10:2 10:5 10:6 10:7 10:8 10:9

A musical staff in treble clef with a key signature of three sharps (F#C#G#). The notes are: 10:0 (rest), 10:1 (A#), 10:2 (A#), 10:5 (A#), 10:6 (A#), 10:7 (A#), 10:8 (A#), and 10:9 (A#).

Root = 10 (Bb)

10:0 10:1 10:2 10:5 10:6 10:7 10:8 10:9

A musical staff in treble clef with a key signature of two flats (BbEb). The notes are: 10:0 (rest), 10:1 (Bb), 10:2 (Bb), 10:5 (Bb), 10:6 (Bb), 10:7 (Bb), 10:8 (Bb), and 10:9 (Bb).

Root = 11 (B)

11:0 11:1 11:2 11:5 11:6 11:7 11:8 11:9

A musical staff in treble clef with a key signature of two sharps (F#C#). The notes are: 11:0 (rest), 11:1 (B), 11:2 (B), 11:5 (B), 11:6 (B), 11:7 (B), 11:8 (B), and 11:9 (B).