

Chord Type 0 1 2 3 4 8 10 11 in All Keys

Treble Clef, 8 Notes, Diamorphic Scale Degrees:12223567

Stanley Jordan

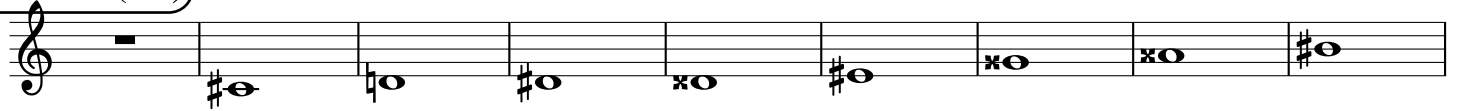
Root = 0 (C)

0:0 0:1 0:2 0:3 0:4 0:8 0:10 0:11



Root = 1 (C#)

1:0 1:1 1:2 1:3 1:4 1:8 1:10 1:11



Root = 1 (Db)

1:0 1:1 1:2 1:3 1:4 1:8 1:10 1:11



Root = 2 (D)

2:0 2:1 2:2 2:3 2:4 2:8 2:10 2:11



Root = 3 (D#)

3:0 3:1 3:2 3:3 3:4 3:8 3:10 3:11



Root = 3 (Eb)

3:0 3:1 3:2 3:3 3:4 3:8 3:10 3:11



Root = 4 (E)

4:0 4:1 4:2 4:3 4:4 4:8 4:10 4:11



Root = 5 (F)

5:0 5:1 5:2 5:3 5:4 5:8 5:10 5:11



Root = 6 (F#)

6:0 6:1 6:2 6:3 6:4 6:8 6:10 6:11



Root = 6 (Gb) 6:0 6:1 6:2 6:3 6:4 6:8 6:10 6:11

A musical staff in treble clef with a key signature of one flat (Bb). The notes are: 6:0 (rest), 6:1 (Bb), 6:2 (Bb), 6:3 (Bb), 6:4 (Bb), 6:8 (Bb), 6:10 (Bb), and 6:11 (Bb).

Root = 7 (G) 7:0 7:1 7:2 7:3 7:4 7:8 7:10 7:11

A musical staff in treble clef with a key signature of one sharp (F#). The notes are: 7:0 (rest), 7:1 (F#), 7:2 (F#), 7:3 (F#), 7:4 (F#), 7:8 (F#), 7:10 (F#), and 7:11 (F#).

Root = 8 (G#) 8:0 8:1 8:2 8:3 8:4 8:8 8:10 8:11

A musical staff in treble clef with a key signature of two sharps (F# and C#). The notes are: 8:0 (rest), 8:1 (G#), 8:2 (G#), 8:3 (G#), 8:4 (G#), 8:8 (G#), 8:10 (G#), and 8:11 (G#).

Root = 8 (Ab) 8:0 8:1 8:2 8:3 8:4 8:8 8:10 8:11

A musical staff in treble clef with a key signature of one flat (Bb). The notes are: 8:0 (rest), 8:1 (Bb), 8:2 (Bb), 8:3 (Bb), 8:4 (Bb), 8:8 (Bb), 8:10 (Bb), and 8:11 (Bb).

Root = 9 (A) 9:0 9:1 9:2 9:3 9:4 9:8 9:10 9:11

A musical staff in treble clef with a key signature of no sharps or flats. The notes are: 9:0 (rest), 9:1 (A), 9:2 (A), 9:3 (A), 9:4 (A), 9:8 (A), 9:10 (A), and 9:11 (A).

Root = 10 (A#) 10:0 10:1 10:2 10:3 10:4 10:8 10:10 10:11

A musical staff in treble clef with a key signature of one sharp (F#). The notes are: 10:0 (rest), 10:1 (F#), 10:2 (F#), 10:3 (F#), 10:4 (F#), 10:8 (F#), 10:10 (F#), and 10:11 (F#).

Root = 10 (Bb) 10:0 10:1 10:2 10:3 10:4 10:8 10:10 10:11

A musical staff in treble clef with a key signature of one flat (Bb). The notes are: 10:0 (rest), 10:1 (Bb), 10:2 (Bb), 10:3 (Bb), 10:4 (Bb), 10:8 (Bb), 10:10 (Bb), and 10:11 (Bb).

Root = 11 (B) 11:0 11:1 11:2 11:3 11:4 11:8 11:10 11:11

A musical staff in treble clef with a key signature of no sharps or flats. The notes are: 11:0 (rest), 11:1 (B), 11:2 (B), 11:3 (B), 11:4 (B), 11:8 (B), 11:10 (B), and 11:11 (B).