

Chord Type 0 3 5 6 7 9 10 in All Keys

Treble Clef, 7 Notes, Diamorphic Scale Degrees:1344567

Stanley Jordan

Root = 0 (C)

0:0

0:3

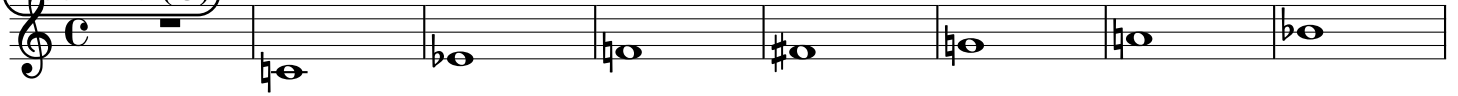
0:5

0:6

0:7

0:9

0:10



Root = 1 (C#)

1:0

1:3

1:5

1:6

1:7

1:9

1:10



Root = 1 (Db)

1:0

1:3

1:5

1:6

1:7

1:9

1:10



Root = 2 (D)

2:0

2:3

2:5

2:6

2:7

2:9

2:10



Root = 3 (D#)

3:0

3:3

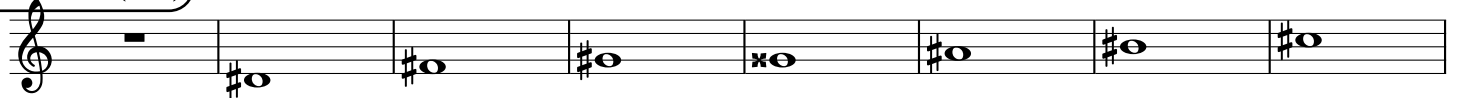
3:5

3:6

3:7

3:9

3:10



Root = 3 (Eb)

3:0

3:3

3:5

3:6

3:7

3:9

3:10



Root = 4 (E)

4:0

4:3

4:5

4:6

4:7

4:9

4:10



Root = 5 (F)

5:0

5:3

5:5

5:6

5:7

5:9

5:10



Root = 6 (F#)

6:0

6:3

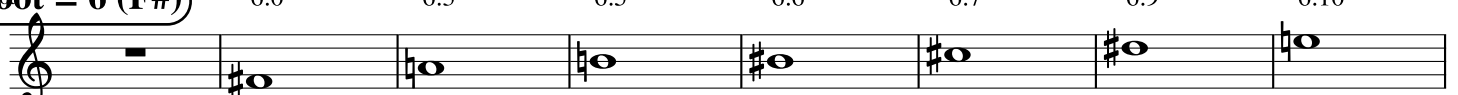
6:5

6:6

6:7

6:9

6:10



Root = 6 (Gb)

6:0 6:3 6:5 6:6 6:7 6:9 6:10

A musical staff in treble clef showing notes for ratios 6:0 to 6:10. The notes are: 6:0 (rest), 6:3 (Bb), 6:5 (Bb), 6:6 (Bb), 6:7 (Bb), 6:9 (Bb), and 6:10 (Bb).

Root = 7 (G)

7:0 7:3 7:5 7:6 7:7 7:9 7:10

A musical staff in treble clef showing notes for ratios 7:0 to 7:10. The notes are: 7:0 (rest), 7:3 (Bb), 7:5 (Bb), 7:6 (Bb), 7:7 (B), 7:9 (B), and 7:10 (B).

Root = 8 (G#)

8:0 8:3 8:5 8:6 8:7 8:9 8:10

A musical staff in treble clef showing notes for ratios 8:0 to 8:10. The notes are: 8:0 (rest), 8:3 (B#), 8:5 (B#), 8:6 (B#), 8:7 (B#), 8:9 (B#), and 8:10 (B#).

Root = 8 (Ab)

8:0 8:3 8:5 8:6 8:7 8:9 8:10

A musical staff in treble clef showing notes for ratios 8:0 to 8:10. The notes are: 8:0 (rest), 8:3 (Bb), 8:5 (Bb), 8:6 (Bb), 8:7 (Bb), 8:9 (Bb), and 8:10 (Bb).

Root = 9 (A)

9:0 9:3 9:5 9:6 9:7 9:9 9:10

A musical staff in treble clef showing notes for ratios 9:0 to 9:10. The notes are: 9:0 (rest), 9:3 (Bb), 9:5 (Bb), 9:6 (B), 9:7 (B), 9:9 (B), and 9:10 (B).

Root = 10 (A#)

10:0 10:3 10:5 10:6 10:7 10:9 10:10

A musical staff in treble clef showing notes for ratios 10:0 to 10:10. The notes are: 10:0 (rest), 10:3 (B#), 10:5 (B#), 10:6 (B#), 10:7 (B#), 10:9 (B#), and 10:10 (B#).

Root = 10 (Bb)

10:0 10:3 10:5 10:6 10:7 10:9 10:10

A musical staff in treble clef showing notes for ratios 10:0 to 10:10. The notes are: 10:0 (rest), 10:3 (Bb), 10:5 (Bb), 10:6 (Bb), 10:7 (Bb), 10:9 (Bb), and 10:10 (Bb).

Root = 11 (B)

11:0 11:3 11:5 11:6 11:7 11:9 11:10

A musical staff in treble clef showing notes for ratios 11:0 to 11:10. The notes are: 11:0 (rest), 11:3 (Bb), 11:5 (Bb), 11:6 (B), 11:7 (B), 11:9 (B), and 11:10 (B).