

# Chord Type 0 3 4 5 9 10 11 in All Keys

Treble Clef, 7 Notes, Diamorphic Scale Degrees:1234667

Stanley Jordan

Root = 0 (C)

0:0      0:3      0:4      0:5      0:9      0:10      0:11



Root = 1 (C#)

1:0      1:3      1:4      1:5      1:9      1:10      1:11



Root = 1 (Db)

1:0      1:3      1:4      1:5      1:9      1:10      1:11



Root = 2 (D)

2:0      2:3      2:4      2:5      2:9      2:10      2:11



Root = 3 (D#)

3:0      3:3      3:4      3:5      3:9      3:10      3:11



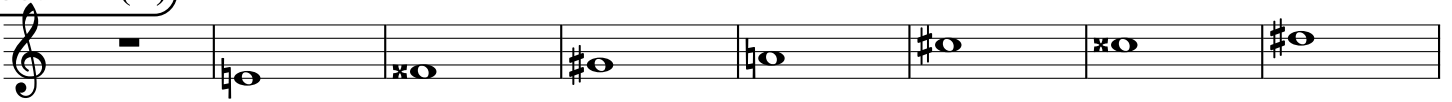
Root = 3 (Eb)

3:0      3:3      3:4      3:5      3:9      3:10      3:11



Root = 4 (E)

4:0      4:3      4:4      4:5      4:9      4:10      4:11



Root = 5 (F)

5:0      5:3      5:4      5:5      5:9      5:10      5:11



Root = 6 (F#)

6:0      6:3      6:4      6:5      6:9      6:10      6:11



**Root = 6 (Gb)**

6:0      6:3      6:4      6:5      6:9      6:10      6:11

A musical staff in treble clef with a key signature of one flat (Gb). The notes are: 6:0 (rest), 6:3 (Bb), 6:4 (Bb), 6:5 (Bb), 6:9 (Bb), 6:10 (Bb), and 6:11 (Bb).

**Root = 7 (G)**

7:0      7:3      7:4      7:5      7:9      7:10      7:11

A musical staff in treble clef with a key signature of one sharp (G). The notes are: 7:0 (rest), 7:3 (G), 7:4 (G), 7:5 (G), 7:9 (G), 7:10 (G), and 7:11 (G).

**Root = 8 (G#)**

8:0      8:3      8:4      8:5      8:9      8:10      8:11

A musical staff in treble clef with a key signature of two sharps (G#). The notes are: 8:0 (rest), 8:3 (G#), 8:4 (G#), 8:5 (G#), 8:9 (G#), 8:10 (G#), and 8:11 (G#).

**Root = 8 (Ab)**

8:0      8:3      8:4      8:5      8:9      8:10      8:11

A musical staff in treble clef with a key signature of one flat (Ab). The notes are: 8:0 (rest), 8:3 (Ab), 8:4 (Ab), 8:5 (Ab), 8:9 (Ab), 8:10 (Ab), and 8:11 (Ab).

**Root = 9 (A)**

9:0      9:3      9:4      9:5      9:9      9:10      9:11

A musical staff in treble clef with a key signature of two sharps (A). The notes are: 9:0 (rest), 9:3 (A), 9:4 (A), 9:5 (A), 9:9 (A), 9:10 (A), and 9:11 (A).

**Root = 10 (A#)**

10:0      10:3      10:4      10:5      10:9      10:10      10:11

A musical staff in treble clef with a key signature of three sharps (A#). The notes are: 10:0 (rest), 10:3 (A#), 10:4 (A#), 10:5 (A#), 10:9 (A#), 10:10 (A#), and 10:11 (A#).

**Root = 10 (Bb)**

10:0      10:3      10:4      10:5      10:9      10:10      10:11

A musical staff in treble clef with a key signature of two flats (Bb). The notes are: 10:0 (rest), 10:3 (Bb), 10:4 (Bb), 10:5 (Bb), 10:9 (Bb), 10:10 (Bb), and 10:11 (Bb).

**Root = 11 (B)**

11:0      11:3      11:4      11:5      11:9      11:10      11:11

A musical staff in treble clef with a key signature of two sharps (B). The notes are: 11:0 (rest), 11:3 (B), 11:4 (B), 11:5 (B), 11:9 (B), 11:10 (B), and 11:11 (B).