

Chord Type 0 2 4 6 8 9 10 in All Keys

Treble Clef, 7 Notes, Diamorphic Scale Degrees:1234567

Stanley Jordan

Root = 0 (C)

0:0

0:2

0:4

0:6

0:8

0:9

0:10



Root = 1 (C#)

1:0

1:2

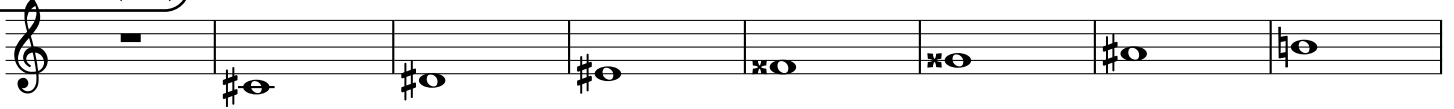
1:4

1:6

1:8

1:9

1:10



Root = 1 (Db)

1:0

1:2

1:4

1:6

1:8

1:9

1:10



Root = 2 (D)

2:0

2:2

2:4

2:6

2:8

2:9

2:10



Root = 3 (D#)

3:0

3:2

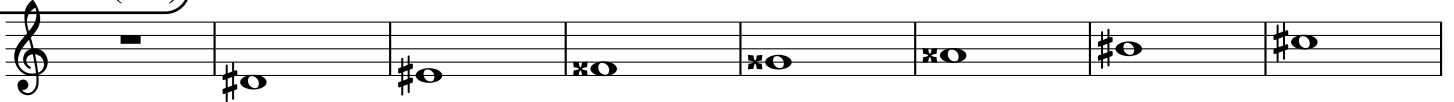
3:4

3:6

3:8

3:9

3:10



Root = 3 (Eb)

3:0

3:2

3:4

3:6

3:8

3:9

3:10



Root = 4 (E)

4:0

4:2

4:4

4:6

4:8

4:9

4:10



Root = 5 (F)

5:0

5:2

5:4

5:6

5:8

5:9

5:10



Root = 6 (F#)

6:0

6:2

6:4

6:6

6:8

6:9

6:10



Root = 6 (Gb)

6:0 6:2 6:4 6:6 6:8 6:9 6:10

A musical staff in treble clef showing notes for ratios 6:0 to 6:10. The notes are: 6:0 (rest), 6:2 (Bb), 6:4 (Bb), 6:6 (Bb), 6:8 (Bb), 6:9 (Bb), and 6:10 (Bb).

Root = 7 (G)

7:0 7:2 7:4 7:6 7:8 7:9 7:10

A musical staff in treble clef showing notes for ratios 7:0 to 7:10. The notes are: 7:0 (rest), 7:2 (G), 7:4 (G), 7:6 (G), 7:8 (G), 7:9 (G), and 7:10 (G).

Root = 8 (G#)

8:0 8:2 8:4 8:6 8:8 8:9 8:10

A musical staff in treble clef showing notes for ratios 8:0 to 8:10. The notes are: 8:0 (rest), 8:2 (G#), 8:4 (G#), 8:6 (G#), 8:8 (G#), 8:9 (G#), and 8:10 (G#).

Root = 8 (Ab)

8:0 8:2 8:4 8:6 8:8 8:9 8:10

A musical staff in treble clef showing notes for ratios 8:0 to 8:10. The notes are: 8:0 (rest), 8:2 (Ab), 8:4 (Ab), 8:6 (Ab), 8:8 (Ab), 8:9 (Ab), and 8:10 (Ab).

Root = 9 (A)

9:0 9:2 9:4 9:6 9:8 9:9 9:10

A musical staff in treble clef showing notes for ratios 9:0 to 9:10. The notes are: 9:0 (rest), 9:2 (A), 9:4 (A), 9:6 (A), 9:8 (A), 9:9 (A), and 9:10 (A).

Root = 10 (A#)

10:0 10:2 10:4 10:6 10:8 10:9 10:10

A musical staff in treble clef showing notes for ratios 10:0 to 10:10. The notes are: 10:0 (rest), 10:2 (A#), 10:4 (A#), 10:6 (A#), 10:8 (A#), 10:9 (A#), and 10:10 (A#).

Root = 10 (Bb)

10:0 10:2 10:4 10:6 10:8 10:9 10:10

A musical staff in treble clef showing notes for ratios 10:0 to 10:10. The notes are: 10:0 (rest), 10:2 (Bb), 10:4 (Bb), 10:6 (Bb), 10:8 (Bb), 10:9 (Bb), and 10:10 (Bb).

Root = 11 (B)

11:0 11:2 11:4 11:6 11:8 11:9 11:10

A musical staff in treble clef showing notes for ratios 11:0 to 11:10. The notes are: 11:0 (rest), 11:2 (B), 11:4 (B), 11:6 (B), 11:8 (B), 11:9 (B), and 11:10 (B).