

# Chord Type 0 2 4 5 7 10 11 in All Keys

Treble Clef, 7 Notes, Diamorphic Scale Degrees:1234567

Stanley Jordan

Root = 0 (C)

0:0

0:2

0:4

0:5

0:7

0:10

0:11



Root = 1 (C#)

1:0

1:2

1:4

1:5

1:7

1:10

1:11



Root = 1 (Db)

1:0

1:2

1:4

1:5

1:7

1:10

1:11



Root = 2 (D)

2:0

2:2

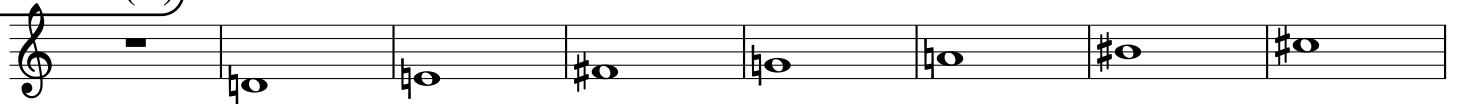
2:4

2:5

2:7

2:10

2:11



Root = 3 (D#)

3:0

3:2

3:4

3:5

3:7

3:10

3:11



Root = 3 (Eb)

3:0

3:2

3:4

3:5

3:7

3:10

3:11



Root = 4 (E)

4:0

4:2

4:4

4:5

4:7

4:10

4:11



Root = 5 (F)

5:0

5:2

5:4

5:5

5:7

5:10

5:11



Root = 6 (F#)

6:0

6:2

6:4

6:5

6:7

6:10

6:11



**Root = 6 (Gb)**

6:0      6:2      6:4      6:5      6:7      6:10      6:11

A musical staff in treble clef showing seven notes. The first note is a whole rest. The subsequent notes are: Gb (flat), Gb (flat), Gb (flat), Gb (flat), Gb (flat), Gb (flat), and Gb (flat).

**Root = 7 (G)**

7:0      7:2      7:4      7:5      7:7      7:10      7:11

A musical staff in treble clef showing seven notes. The first note is a whole rest. The subsequent notes are: G (natural), G (natural), G (natural), G (natural), G (natural), G# (sharp), and G# (sharp).

**Root = 8 (G#)**

8:0      8:2      8:4      8:5      8:7      8:10      8:11

A musical staff in treble clef showing seven notes. The first note is a whole rest. The subsequent notes are: G# (sharp), G# (sharp), G# (sharp), G# (sharp), G# (sharp), G# (sharp), and G# (sharp).

**Root = 8 (Ab)**

8:0      8:2      8:4      8:5      8:7      8:10      8:11

A musical staff in treble clef showing seven notes. The first note is a whole rest. The subsequent notes are: Ab (flat), Ab (flat), Ab (flat), Ab (flat), Ab (flat), Ab (flat), and Ab (flat).

**Root = 9 (A)**

9:0      9:2      9:4      9:5      9:7      9:10      9:11

A musical staff in treble clef showing seven notes. The first note is a whole rest. The subsequent notes are: A (natural), A (natural), A# (sharp), A (natural), A (natural), A (natural), and A# (sharp).

**Root = 10 (A#)**

10:0      10:2      10:4      10:5      10:7      10:10      10:11

A musical staff in treble clef showing seven notes. The first note is a whole rest. The subsequent notes are: A# (sharp), A# (sharp), A# (sharp), A# (sharp), A# (sharp), A# (sharp), and A# (sharp).

**Root = 10 (Bb)**

10:0      10:2      10:4      10:5      10:7      10:10      10:11

A musical staff in treble clef showing seven notes. The first note is a whole rest. The subsequent notes are: Bb (flat), Bb (flat), Bb (flat), Bb (flat), Bb (flat), Bb (flat), and Bb (flat).

**Root = 11 (B)**

11:0      11:2      11:4      11:5      11:7      11:10      11:11

A musical staff in treble clef showing seven notes. The first note is a whole rest. The subsequent notes are: B (natural), B (natural), B (natural), B (natural), B (natural), B (natural), and B (natural).