

Chord Type 0 2 4 5 6 8 10 in All Keys

Treble Clef, 7 Notes, Diamorphic Scale Degrees:1234567

Stanley Jordan

Root = 0 (C)

0:0

0:2

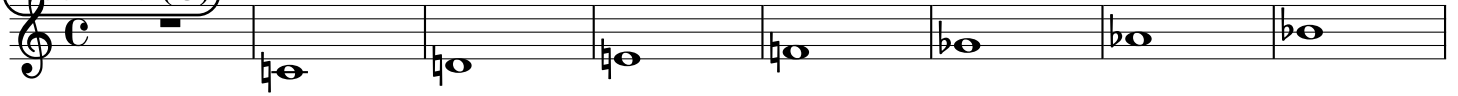
0:4

0:5

0:6

0:8

0:10



Root = 1 (C#)

1:0

1:2

1:4

1:5

1:6

1:8

1:10



Root = 1 (Db)

1:0

1:2

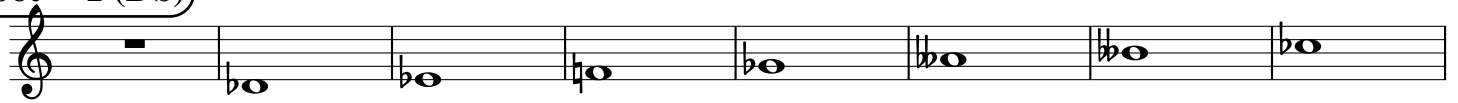
1:4

1:5

1:6

1:8

1:10



Root = 2 (D)

2:0

2:2

2:4

2:5

2:6

2:8

2:10



Root = 3 (D#)

3:0

3:2

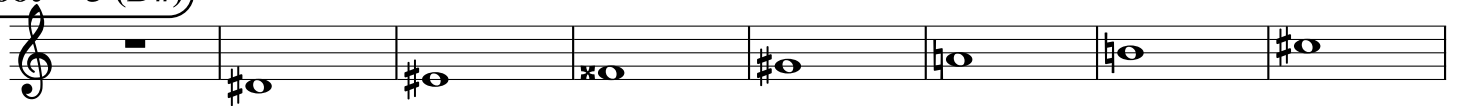
3:4

3:5

3:6

3:8

3:10



Root = 3 (Eb)

3:0

3:2

3:4

3:5

3:6

3:8

3:10



Root = 4 (E)

4:0

4:2

4:4

4:5

4:6

4:8

4:10



Root = 5 (F)

5:0

5:2

5:4

5:5

5:6

5:8

5:10



Root = 6 (F#)

6:0

6:2

6:4

6:5

6:6

6:8

6:10



Root = 6 (Gb) 6:0 6:2 6:4 6:5 6:6 6:8 6:10

This musical staff shows the notes for the root 6 (Gb) in a treble clef. The notes are: 6:0 (rest), 6:2 (Bb), 6:4 (Bb), 6:5 (Bb), 6:6 (Bb), 6:8 (Bb), and 6:10 (Bb).

Root = 7 (G) 7:0 7:2 7:4 7:5 7:6 7:8 7:10

This musical staff shows the notes for the root 7 (G) in a treble clef. The notes are: 7:0 (rest), 7:2 (G), 7:4 (G), 7:5 (G), 7:6 (G), 7:8 (G), and 7:10 (G).

Root = 8 (G#) 8:0 8:2 8:4 8:5 8:6 8:8 8:10

This musical staff shows the notes for the root 8 (G#) in a treble clef. The notes are: 8:0 (rest), 8:2 (G#), 8:4 (G#), 8:5 (G#), 8:6 (G#), 8:8 (G#), and 8:10 (G#).

Root = 8 (Ab) 8:0 8:2 8:4 8:5 8:6 8:8 8:10

This musical staff shows the notes for the root 8 (Ab) in a treble clef. The notes are: 8:0 (rest), 8:2 (Ab), 8:4 (Ab), 8:5 (Ab), 8:6 (Ab), 8:8 (Ab), and 8:10 (Ab).

Root = 9 (A) 9:0 9:2 9:4 9:5 9:6 9:8 9:10

This musical staff shows the notes for the root 9 (A) in a treble clef. The notes are: 9:0 (rest), 9:2 (A), 9:4 (A), 9:5 (A), 9:6 (A), 9:8 (A), and 9:10 (A).

Root = 10 (A#) 10:0 10:2 10:4 10:5 10:6 10:8 10:10

This musical staff shows the notes for the root 10 (A#) in a treble clef. The notes are: 10:0 (rest), 10:2 (A#), 10:4 (A#), 10:5 (A#), 10:6 (A#), 10:8 (A#), and 10:10 (A#).

Root = 10 (Bb) 10:0 10:2 10:4 10:5 10:6 10:8 10:10

This musical staff shows the notes for the root 10 (Bb) in a treble clef. The notes are: 10:0 (rest), 10:2 (Bb), 10:4 (Bb), 10:5 (Bb), 10:6 (Bb), 10:8 (Bb), and 10:10 (Bb).

Root = 11 (B) 11:0 11:2 11:4 11:5 11:6 11:8 11:10

This musical staff shows the notes for the root 11 (B) in a treble clef. The notes are: 11:0 (rest), 11:2 (B), 11:4 (B), 11:5 (B), 11:6 (B), 11:8 (B), and 11:10 (B).