

Chord Type 0 2 3 5 6 8 10 in All Keys

Treble Clef, 7 Notes, Diamorphic Scale Degrees:1234567

Stanley Jordan

Root = 0 (C)

0:0

0:2

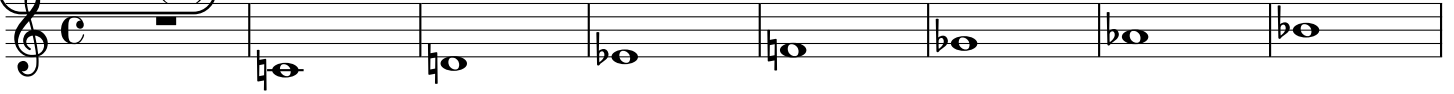
0:3

0:5

0:6

0:8

0:10



Root = 1 (C#)

1:0

1:2

1:3

1:5

1:6

1:8

1:10



Root = 1 (Db)

1:0

1:2

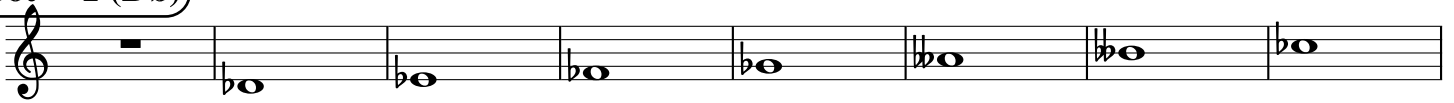
1:3

1:5

1:6

1:8

1:10



Root = 2 (D)

2:0

2:2

2:3

2:5

2:6

2:8

2:10



Root = 3 (D#)

3:0

3:2

3:3

3:5

3:6

3:8

3:10



Root = 3 (Eb)

3:0

3:2

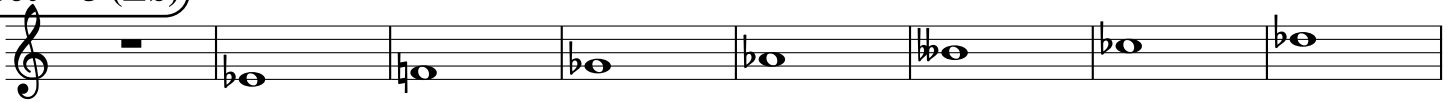
3:3

3:5

3:6

3:8

3:10



Root = 4 (E)

4:0

4:2

4:3

4:5

4:6

4:8

4:10



Root = 5 (F)

5:0

5:2

5:3

5:5

5:6

5:8

5:10



Root = 6 (F#)

6:0

6:2

6:3

6:5

6:6

6:8

6:10



Root = 6 (Gb)

6:0 6:2 6:3 6:5 6:6 6:8 6:10

A musical staff in treble clef showing seven notes. The first note is a whole rest. The subsequent notes are: Gb (6:2), Gb (6:3), Gb (6:5), Gb (6:6), Gb (6:8), and Gb (6:10).

Root = 7 (G)

7:0 7:2 7:3 7:5 7:6 7:8 7:10

A musical staff in treble clef showing seven notes. The first note is a whole rest. The subsequent notes are: G (7:2), G (7:3), G (7:5), G (7:6), G (7:8), and G (7:10).

Root = 8 (G#)

8:0 8:2 8:3 8:5 8:6 8:8 8:10

A musical staff in treble clef showing seven notes. The first note is a whole rest. The subsequent notes are: G# (8:2), G# (8:3), G# (8:5), G# (8:6), G# (8:8), and G# (8:10).

Root = 8 (Ab)

8:0 8:2 8:3 8:5 8:6 8:8 8:10

A musical staff in treble clef showing seven notes. The first note is a whole rest. The subsequent notes are: Ab (8:2), Ab (8:3), Ab (8:5), Ab (8:6), Ab (8:8), and Ab (8:10).

Root = 9 (A)

9:0 9:2 9:3 9:5 9:6 9:8 9:10

A musical staff in treble clef showing seven notes. The first note is a whole rest. The subsequent notes are: A (9:2), A (9:3), A (9:5), A (9:6), A (9:8), and A (9:10).

Root = 10 (A#)

10:0 10:2 10:3 10:5 10:6 10:8 10:10

A musical staff in treble clef showing seven notes. The first note is a whole rest. The subsequent notes are: A# (10:2), A# (10:3), A# (10:5), A# (10:6), A# (10:8), and A# (10:10).

Root = 10 (Bb)

10:0 10:2 10:3 10:5 10:6 10:8 10:10

A musical staff in treble clef showing seven notes. The first note is a whole rest. The subsequent notes are: Bb (10:2), Bb (10:3), Bb (10:5), Bb (10:6), Bb (10:8), and Bb (10:10).

Root = 11 (B)

11:0 11:2 11:3 11:5 11:6 11:8 11:10

A musical staff in treble clef showing seven notes. The first note is a whole rest. The subsequent notes are: B (11:2), B (11:3), B (11:5), B (11:6), B (11:8), and B (11:10).