

Chord Type 0 1 3 4 6 10 11 in All Keys

Treble Clef, 7 Notes, Diamorphic Scale Degrees:1223567

Stanley Jordan

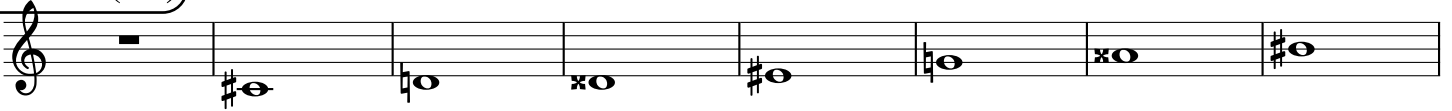
Root = 0 (C)

0:0 0:1 0:3 0:4 0:6 0:10 0:11



Root = 1 (C#)

1:0 1:1 1:3 1:4 1:6 1:10 1:11



Root = 1 (Db)

1:0 1:1 1:3 1:4 1:6 1:10 1:11



Root = 2 (D)

2:0 2:1 2:3 2:4 2:6 2:10 2:11



Root = 3 (D#)

3:0 3:1 3:3 3:4 3:6 3:10 3:11



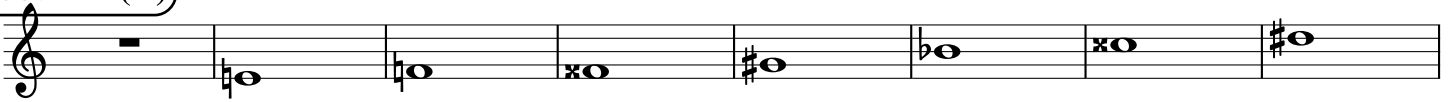
Root = 3 (Eb)

3:0 3:1 3:3 3:4 3:6 3:10 3:11



Root = 4 (E)

4:0 4:1 4:3 4:4 4:6 4:10 4:11



Root = 5 (F)

5:0 5:1 5:3 5:4 5:6 5:10 5:11



Root = 6 (F#)

6:0 6:1 6:3 6:4 6:6 6:10 6:11



Root = 6 (Gb)

6:0 6:1 6:3 6:4 6:6 6:10 6:11

A musical staff in treble clef showing notes for ratios 6:0 to 6:11. The notes are: 6:0 (rest), 6:1 (Bb), 6:3 (Bb), 6:4 (Bb), 6:6 (Bb), 6:10 (Bb), and 6:11 (Bb).

Root = 7 (G)

7:0 7:1 7:3 7:4 7:6 7:10 7:11

A musical staff in treble clef showing notes for ratios 7:0 to 7:11. The notes are: 7:0 (rest), 7:1 (Bb), 7:3 (Bb), 7:4 (Bb), 7:6 (Bb), 7:10 (Bb), and 7:11 (Bb).

Root = 8 (G#)

8:0 8:1 8:3 8:4 8:6 8:10 8:11

A musical staff in treble clef showing notes for ratios 8:0 to 8:11. The notes are: 8:0 (rest), 8:1 (B#), 8:3 (B#), 8:4 (B#), 8:6 (B#), 8:10 (B#), and 8:11 (B#).

Root = 8 (Ab)

8:0 8:1 8:3 8:4 8:6 8:10 8:11

A musical staff in treble clef showing notes for ratios 8:0 to 8:11. The notes are: 8:0 (rest), 8:1 (Bb), 8:3 (Bb), 8:4 (Bb), 8:6 (Bb), 8:10 (Bb), and 8:11 (Bb).

Root = 9 (A)

9:0 9:1 9:3 9:4 9:6 9:10 9:11

A musical staff in treble clef showing notes for ratios 9:0 to 9:11. The notes are: 9:0 (rest), 9:1 (Bb), 9:3 (Bb), 9:4 (Bb), 9:6 (Bb), 9:10 (Bb), and 9:11 (Bb).

Root = 10 (A#)

10:0 10:1 10:3 10:4 10:6 10:10 10:11

A musical staff in treble clef showing notes for ratios 10:0 to 10:11. The notes are: 10:0 (rest), 10:1 (B#), 10:3 (B#), 10:4 (B#), 10:6 (B#), 10:10 (B#), and 10:11 (B#).

Root = 10 (Bb)

10:0 10:1 10:3 10:4 10:6 10:10 10:11

A musical staff in treble clef showing notes for ratios 10:0 to 10:11. The notes are: 10:0 (rest), 10:1 (Bb), 10:3 (Bb), 10:4 (Bb), 10:6 (Bb), 10:10 (Bb), and 10:11 (Bb).

Root = 11 (B)

11:0 11:1 11:3 11:4 11:6 11:10 11:11

A musical staff in treble clef showing notes for ratios 11:0 to 11:11. The notes are: 11:0 (rest), 11:1 (Bb), 11:3 (Bb), 11:4 (Bb), 11:6 (Bb), 11:10 (Bb), and 11:11 (Bb).