

Chord Type 0 1 2 3 4 10 11 in All Keys

Treble Clef, 7 Notes, Diamorphic Scale Degrees:1223367

Stanley Jordan

Root = 0 (C)

0:0

0:1

0:2

0:3

0:4

0:10

0:11



Root = 1 (C#)

1:0

1:1

1:2

1:3

1:4

1:10

1:11



Root = 1 (Db)

1:0

1:1

1:2

1:3

1:4

1:10

1:11



Root = 2 (D)

2:0

2:1

2:2

2:3

2:4

2:10

2:11



Root = 3 (D#)

3:0

3:1

3:2

3:3

3:4

3:10

3:11



Root = 3 (Eb)

3:0

3:1

3:2

3:3

3:4

3:10

3:11



Root = 4 (E)

4:0

4:1

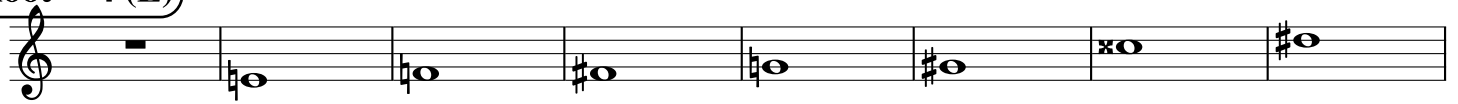
4:2

4:3

4:4

4:10

4:11



Root = 5 (F)

5:0

5:1

5:2

5:3

5:4

5:10

5:11



Root = 6 (F#)

6:0

6:1

6:2

6:3

6:4

6:10

6:11




Root = 6 (Gb) 6:0 6:1 6:2 6:3 6:4 6:10 6:11



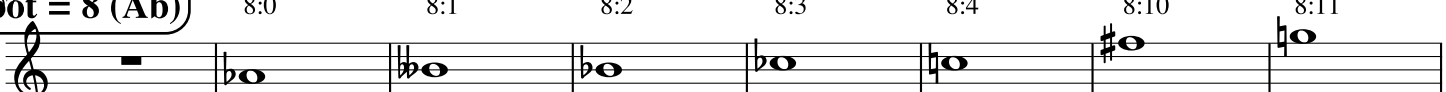
Root = 7 (G) 7:0 7:1 7:2 7:3 7:4 7:10 7:11




Root = 8 (G#) 8:0 8:1 8:2 8:3 8:4 8:10 8:11



Root = 8 (Ab) 8:0 8:1 8:2 8:3 8:4 8:10 8:11




Root = 9 (A) 9:0 9:1 9:2 9:3 9:4 9:10 9:11



Root = 10 (A#) 10:0 10:1 10:2 10:3 10:4 10:10 10:11



Root = 10 (Bb) 10:0 10:1 10:2 10:3 10:4 10:10 10:11



Root = 11 (B) 11:0 11:1 11:2 11:3 11:4 11:10 11:11

