

Chord Type 0 4 5 7 10 11 in All Keys

Treble Clef, 6 Notes, Diatonic Scale Degrees: 134567

Stanley Jordan

Root = 0 (C)

0:0

0:4

0:5

0:7

0:10

0:11



Root = 1 (C#)

1:0

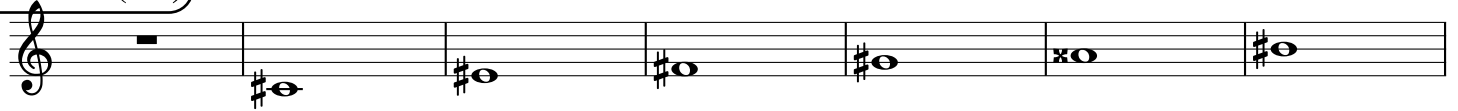
1:4

1:5

1:7

1:10

1:11



Root = 1 (Db)

1:0

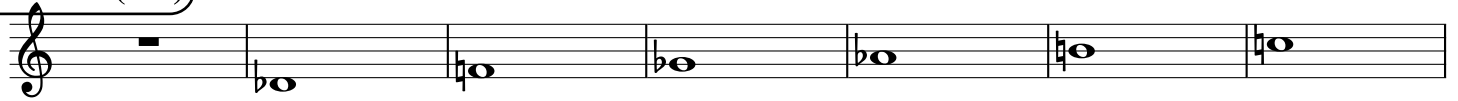
1:4

1:5

1:7

1:10

1:11



Root = 2 (D)

2:0

2:4

2:5

2:7

2:10

2:11



Root = 3 (D#)

3:0

3:4

3:5

3:7

3:10

3:11



Root = 3 (Eb)

3:0

3:4

3:5

3:7

3:10

3:11



Root = 4 (E)

4:0

4:4

4:5

4:7

4:10

4:11



Root = 5 (F)

5:0

5:4

5:5

5:7

5:10

5:11



Root = 6 (F#)

6:0

6:4

6:5

6:7

6:10

6:11



Root = 6 (Gb)

6:0 6:4 6:5 6:7 6:10 6:11

A musical staff in treble clef showing six notes. The first note is a whole rest. The subsequent notes are: Gb (flat), Gb (flat), Gb (flat), Gb (flat), Gb (flat), and Gb (flat).

Root = 7 (G)

7:0 7:4 7:5 7:7 7:10 7:11

A musical staff in treble clef showing six notes. The first note is a whole rest. The subsequent notes are: G (natural), G (natural), G (natural), G (natural), G# (sharp), and G# (sharp).

Root = 8 (G#)

8:0 8:4 8:5 8:7 8:10 8:11

A musical staff in treble clef showing six notes. The first note is a whole rest. The subsequent notes are: G# (sharp), G# (sharp), G# (sharp), G# (sharp), G# (sharp), and G# (sharp).

Root = 8 (Ab)

8:0 8:4 8:5 8:7 8:10 8:11

A musical staff in treble clef showing six notes. The first note is a whole rest. The subsequent notes are: Ab (flat), Ab (flat), Ab (flat), Ab (flat), Ab (flat), and Ab (flat).

Root = 9 (A)

9:0 9:4 9:5 9:7 9:10 9:11

A musical staff in treble clef showing six notes. The first note is a whole rest. The subsequent notes are: A (natural), A# (sharp), A (natural), A (natural), A# (sharp), and A# (sharp).

Root = 10 (A#)

10:0 10:4 10:5 10:7 10:10 10:11

A musical staff in treble clef showing six notes. The first note is a whole rest. The subsequent notes are: A# (sharp), A# (sharp), A# (sharp), A# (sharp), A# (sharp), and A# (sharp).

Root = 10 (Bb)

10:0 10:4 10:5 10:7 10:10 10:11

A musical staff in treble clef showing six notes. The first note is a whole rest. The subsequent notes are: Bb (flat), Bb (flat), Bb (flat), Bb (flat), Bb (flat), and Bb (flat).

Root = 11 (B)

11:0 11:4 11:5 11:7 11:10 11:11

A musical staff in treble clef showing six notes. The first note is a whole rest. The subsequent notes are: B (natural), B (natural), B (natural), B (natural), B (natural), and B (natural).