

Chord Type 0 2 4 7 9 11 in All Keys

Treble Clef, 6 Notes, Diatonic Scale Degrees: 123567

Stanley Jordan

Root = 0 (C)

0:0

0:2

0:4

0:7

0:9

0:11



Root = 1 (C#)

1:0

1:2

1:4

1:7

1:9

1:11



Root = 1 (Db)

1:0

1:2

1:4

1:7

1:9

1:11



Root = 2 (D)

2:0

2:2

2:4

2:7

2:9

2:11



Root = 3 (D#)

3:0

3:2

3:4

3:7

3:9

3:11



Root = 3 (Eb)

3:0

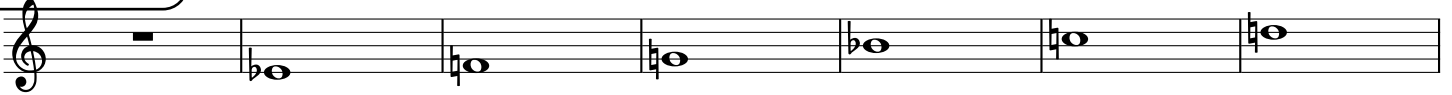
3:2

3:4

3:7

3:9

3:11



Root = 4 (E)

4:0

4:2

4:4

4:7

4:9

4:11



Root = 5 (F)

5:0

5:2

5:4

5:7

5:9

5:11



Root = 6 (F#)

6:0

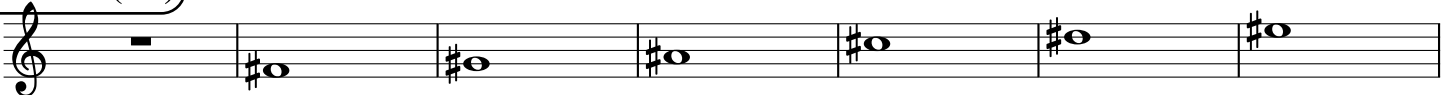
6:2

6:4

6:7

6:9

6:11



Root = 6 (Gb)

6:0 6:2 6:4 6:7 6:9 6:11

A musical staff in treble clef showing seven notes: a whole rest, Gb2, Gb3, Gb4, Gb5, Gb6, and Gb7. The notes are represented by circles with stems and accidentals (flat) on the appropriate lines and spaces.

Root = 7 (G)

7:0 7:2 7:4 7:7 7:9 7:11

A musical staff in treble clef showing seven notes: a whole rest, G2, G3, G4, G5, G6, and G7. The notes are represented by circles with stems and accidentals (natural) on the appropriate lines and spaces.

Root = 8 (G#)

8:0 8:2 8:4 8:7 8:9 8:11

A musical staff in treble clef showing seven notes: a whole rest, G#2, G#3, G#4, G#5, G#6, and G#7. The notes are represented by circles with stems and accidentals (sharp) on the appropriate lines and spaces.

Root = 8 (Ab)

8:0 8:2 8:4 8:7 8:9 8:11

A musical staff in treble clef showing seven notes: a whole rest, Ab2, Ab3, Ab4, Ab5, Ab6, and Ab7. The notes are represented by circles with stems and accidentals (flat) on the appropriate lines and spaces.

Root = 9 (A)

9:0 9:2 9:4 9:7 9:9 9:11

A musical staff in treble clef showing seven notes: a whole rest, A2, A3, A4, A5, A6, and A7. The notes are represented by circles with stems and accidentals (natural) on the appropriate lines and spaces.

Root = 10 (A#)

10:0 10:2 10:4 10:7 10:9 10:11

A musical staff in treble clef showing seven notes: a whole rest, A#2, A#3, A#4, A#5, A#6, and A#7. The notes are represented by circles with stems and accidentals (sharp) on the appropriate lines and spaces.

Root = 10 (Bb)

10:0 10:2 10:4 10:7 10:9 10:11

A musical staff in treble clef showing seven notes: a whole rest, Bb2, Bb3, Bb4, Bb5, Bb6, and Bb7. The notes are represented by circles with stems and accidentals (flat) on the appropriate lines and spaces.

Root = 11 (B)

11:0 11:2 11:4 11:7 11:9 11:11

A musical staff in treble clef showing seven notes: a whole rest, B2, B3, B4, B5, B6, and B7. The notes are represented by circles with stems and accidentals (natural) on the appropriate lines and spaces.