

# Chord Type 0 2 4 6 8 10 in All Keys

Treble Clef, 6 Notes, Diatonic Scale Degrees: 123457

Stanley Jordan

Root = 0 (C)

0:0

0:2

0:4

0:6

0:8

0:10



Root = 1 (C#)

1:0

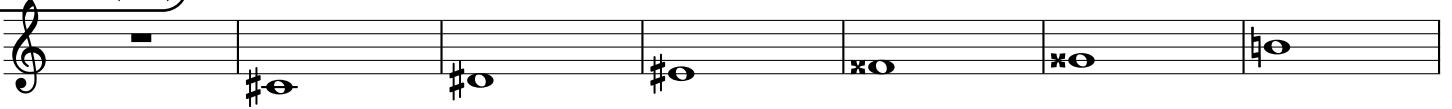
1:2

1:4

1:6

1:8

1:10



Root = 1 (Db)

1:0

1:2

1:4

1:6

1:8

1:10



Root = 2 (D)

2:0

2:2

2:4

2:6

2:8

2:10



Root = 3 (D#)

3:0

3:2

3:4

3:6

3:8

3:10



Root = 3 (Eb)

3:0

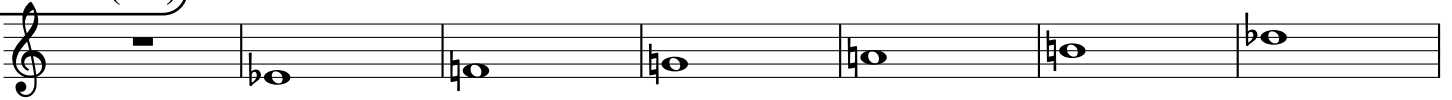
3:2

3:4

3:6

3:8

3:10



Root = 4 (E)

4:0

4:2

4:4

4:6

4:8

4:10



Root = 5 (F)

5:0

5:2

5:4

5:6

5:8

5:10



Root = 6 (F#)

6:0

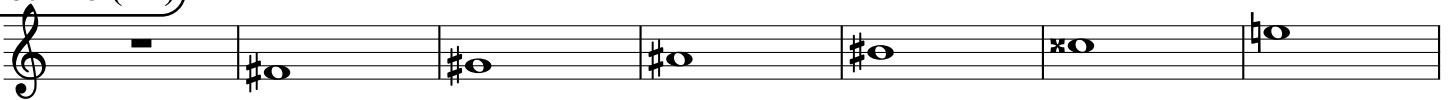
6:2

6:4

6:6

6:8

6:10



**Root = 6 (Gb)**

6:0      6:2      6:4      6:6      6:8      6:10

A musical staff in treble clef showing the notes for the 6th harmonic series starting on Gb. The notes are: 6:0 (rest), 6:2 (Fb), 6:4 (Eb), 6:6 (Gb), 6:8 (Fb), 6:10 (Eb).

**Root = 7 (G)**

7:0      7:2      7:4      7:6      7:8      7:10

A musical staff in treble clef showing the notes for the 7th harmonic series starting on G. The notes are: 7:0 (rest), 7:2 (F), 7:4 (Eb), 7:6 (G), 7:8 (F), 7:10 (Eb).

**Root = 8 (G#)**

8:0      8:2      8:4      8:6      8:8      8:10

A musical staff in treble clef showing the notes for the 8th harmonic series starting on G#. The notes are: 8:0 (rest), 8:2 (F#), 8:4 (G#), 8:6 (A), 8:8 (G#), 8:10 (A).

**Root = 8 (Ab)**

8:0      8:2      8:4      8:6      8:8      8:10

A musical staff in treble clef showing the notes for the 8th harmonic series starting on Ab. The notes are: 8:0 (rest), 8:2 (F), 8:4 (Eb), 8:6 (G), 8:8 (F), 8:10 (Eb).

**Root = 9 (A)**

9:0      9:2      9:4      9:6      9:8      9:10

A musical staff in treble clef showing the notes for the 9th harmonic series starting on A. The notes are: 9:0 (rest), 9:2 (F), 9:4 (G), 9:6 (A), 9:8 (B), 9:10 (Cb).

**Root = 10 (A#)**

10:0      10:2      10:4      10:6      10:8      10:10

A musical staff in treble clef showing the notes for the 10th harmonic series starting on A#. The notes are: 10:0 (rest), 10:2 (A#), 10:4 (B), 10:6 (C), 10:8 (A#), 10:10 (B).

**Root = 10 (Bb)**

10:0      10:2      10:4      10:6      10:8      10:10

A musical staff in treble clef showing the notes for the 10th harmonic series starting on Bb. The notes are: 10:0 (rest), 10:2 (Bb), 10:4 (Cb), 10:6 (Bb), 10:8 (Cb), 10:10 (Bb).

**Root = 11 (B)**

11:0      11:2      11:4      11:6      11:8      11:10

A musical staff in treble clef showing the notes for the 11th harmonic series starting on B. The notes are: 11:0 (rest), 11:2 (B), 11:4 (C), 11:6 (D), 11:8 (E), 11:10 (F).