

Chord Type 0 2 3 4 9 10 in All Keys

Treble Clef, 6 Notes, Diatonic Scale Degrees: 1 2 2 3 6 7

Stanley Jordan

Root = 0 (C)

0:0

0:2

0:3

0:4

0:9

0:10



Root = 1 (C#)

1:0

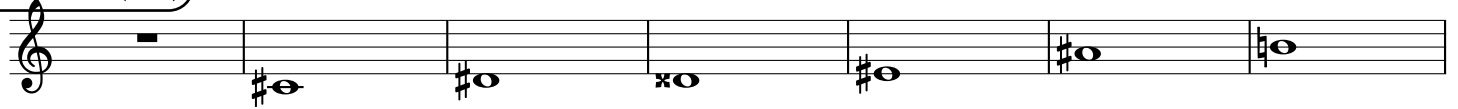
1:2

1:3

1:4

1:9

1:10



Root = 1 (Db)

1:0

1:2

1:3

1:4

1:9

1:10



Root = 2 (D)

2:0

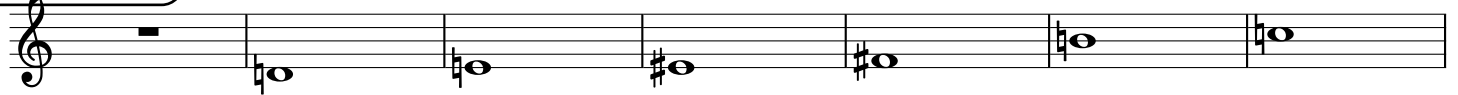
2:2

2:3

2:4

2:9

2:10



Root = 3 (D#)

3:0

3:2

3:3

3:4

3:9

3:10



Root = 3 (Eb)

3:0

3:2

3:3

3:4

3:9

3:10



Root = 4 (E)

4:0

4:2

4:3

4:4

4:9

4:10



Root = 5 (F)

5:0

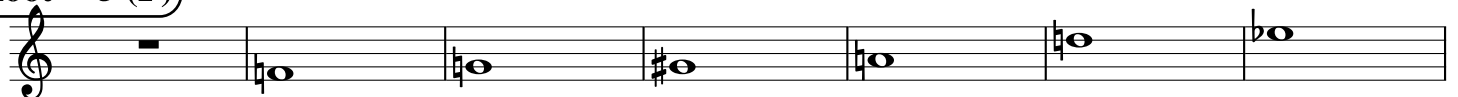
5:2

5:3

5:4

5:9

5:10



Root = 6 (F#)

6:0

6:2

6:3

6:4

6:9

6:10



Root = 6 (Gb)

6:0 6:2 6:3 6:4 6:9 6:10

A musical staff in treble clef showing six notes. The first note is a whole rest. The second note is Gb (F#) on the second line. The third note is Gb (F#) on the second line. The fourth note is Gb (F#) on the second line. The fifth note is Gb (F#) on the second line. The sixth note is Gb (F#) on the second line.

Root = 7 (G)

7:0 7:2 7:3 7:4 7:9 7:10

A musical staff in treble clef showing six notes. The first note is a whole rest. The second note is G on the second line. The third note is G on the second line. The fourth note is G on the second line. The fifth note is G on the second line. The sixth note is G on the second line.

Root = 8 (G#)

8:0 8:2 8:3 8:4 8:9 8:10

A musical staff in treble clef showing six notes. The first note is a whole rest. The second note is G# on the second line. The third note is G# on the second line. The fourth note is G# on the second line. The fifth note is G# on the second line. The sixth note is G# on the second line.

Root = 8 (Ab)

8:0 8:2 8:3 8:4 8:9 8:10

A musical staff in treble clef showing six notes. The first note is a whole rest. The second note is Ab on the second line. The third note is Ab on the second line. The fourth note is Ab on the second line. The fifth note is Ab on the second line. The sixth note is Ab on the second line.

Root = 9 (A)

9:0 9:2 9:3 9:4 9:9 9:10

A musical staff in treble clef showing six notes. The first note is a whole rest. The second note is A on the second line. The third note is A on the second line. The fourth note is A on the second line. The fifth note is A on the second line. The sixth note is A on the second line.

Root = 10 (A#)

10:0 10:2 10:3 10:4 10:9 10:10

A musical staff in treble clef showing six notes. The first note is a whole rest. The second note is A# on the second line. The third note is A# on the second line. The fourth note is A# on the second line. The fifth note is A# on the second line. The sixth note is A# on the second line.

Root = 10 (Bb)

10:0 10:2 10:3 10:4 10:9 10:10

A musical staff in treble clef showing six notes. The first note is a whole rest. The second note is Bb on the second line. The third note is Bb on the second line. The fourth note is Bb on the second line. The fifth note is Bb on the second line. The sixth note is Bb on the second line.

Root = 11 (B)

11:0 11:2 11:3 11:4 11:9 11:10

A musical staff in treble clef showing six notes. The first note is a whole rest. The second note is B on the second line. The third note is B on the second line. The fourth note is B on the second line. The fifth note is B on the second line. The sixth note is B on the second line.