

Chord Type 0 1 6 7 9 11 in All Keys

Treble Clef, 6 Notes, Diatonic Scale Degrees: 124567

Stanley Jordan

Root = 0 (C)

0:0

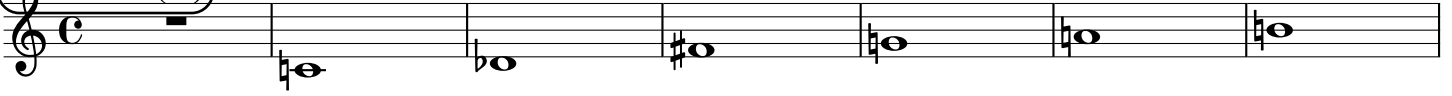
0:1

0:6

0:7

0:9

0:11



Root = 1 (C#)

1:0

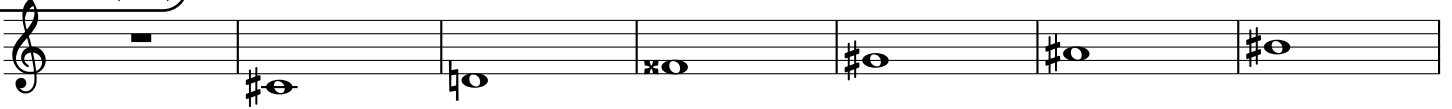
1:1

1:6

1:7

1:9

1:11



Root = 1 (Db)

1:0

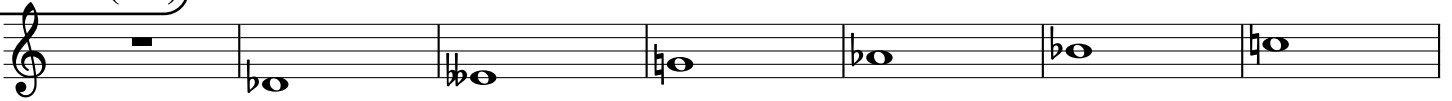
1:1

1:6

1:7

1:9

1:11



Root = 2 (D)

2:0

2:1

2:6

2:7

2:9

2:11



Root = 3 (D#)

3:0

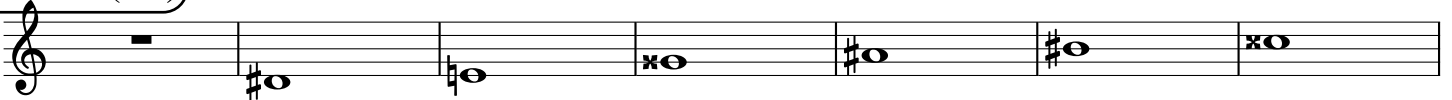
3:1

3:6

3:7

3:9

3:11



Root = 3 (Eb)

3:0

3:1

3:6

3:7

3:9

3:11



Root = 4 (E)

4:0

4:1

4:6

4:7

4:9

4:11



Root = 5 (F)

5:0

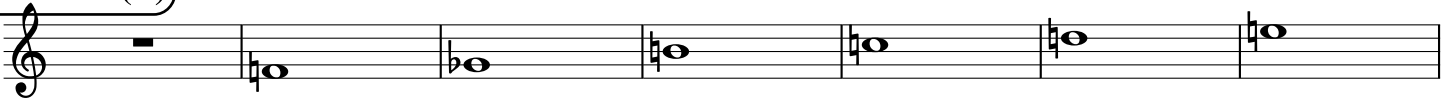
5:1

5:6

5:7

5:9

5:11



Root = 6 (F#)

6:0

6:1

6:6

6:7

6:9

6:11



Root = 6 (Gb)

6:0 6:1 6:6 6:7 6:9 6:11

A musical staff in treble clef showing six notes. The first note is a whole rest. The second note is Gb (flat). The third note is Gb (flat). The fourth note is Gb (flat). The fifth note is Gb (flat). The sixth note is Gb (flat).

Root = 7 (G)

7:0 7:1 7:6 7:7 7:9 7:11

A musical staff in treble clef showing six notes. The first note is a whole rest. The second note is G (natural). The third note is G (flat). The fourth note is G (sharp). The fifth note is G (flat). The sixth note is G (sharp).

Root = 8 (G#)

8:0 8:1 8:6 8:7 8:9 8:11

A musical staff in treble clef showing six notes. The first note is a whole rest. The second note is G# (sharp). The third note is G# (flat). The fourth note is G# (sharp). The fifth note is G# (sharp). The sixth note is G# (sharp).

Root = 8 (Ab)

8:0 8:1 8:6 8:7 8:9 8:11

A musical staff in treble clef showing six notes. The first note is a whole rest. The second note is Ab (flat). The third note is Ab (flat). The fourth note is Ab (flat). The fifth note is Ab (flat). The sixth note is Ab (flat).

Root = 9 (A)

9:0 9:1 9:6 9:7 9:9 9:11

A musical staff in treble clef showing six notes. The first note is a whole rest. The second note is A (flat). The third note is A (flat). The fourth note is A (sharp). The fifth note is A (sharp). The sixth note is A (sharp).

Root = 10 (A#)

10:0 10:1 10:6 10:7 10:9 10:11

A musical staff in treble clef showing six notes. The first note is a whole rest. The second note is A# (sharp). The third note is A# (flat). The fourth note is A# (sharp). The fifth note is A# (sharp). The sixth note is A# (sharp).

Root = 10 (Bb)

10:0 10:1 10:6 10:7 10:9 10:11

A musical staff in treble clef showing six notes. The first note is a whole rest. The second note is Bb (flat). The third note is Bb (flat). The fourth note is Bb (flat). The fifth note is Bb (flat). The sixth note is Bb (flat).

Root = 11 (B)

11:0 11:1 11:6 11:7 11:9 11:11

A musical staff in treble clef showing six notes. The first note is a whole rest. The second note is B (flat). The third note is B (flat). The fourth note is B (sharp). The fifth note is B (sharp). The sixth note is B (sharp).