

Chord Type 0 1 3 4 7 9 in All Keys

Treble Clef, 6 Notes, Diatonic Scale Degrees: 1 2 2 3 5 6

Stanley Jordan

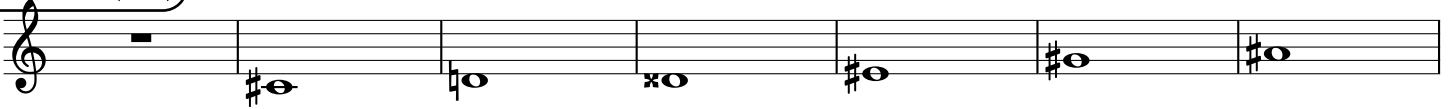
Root = 0 (C)

0:0 0:1 0:3 0:4 0:7 0:9



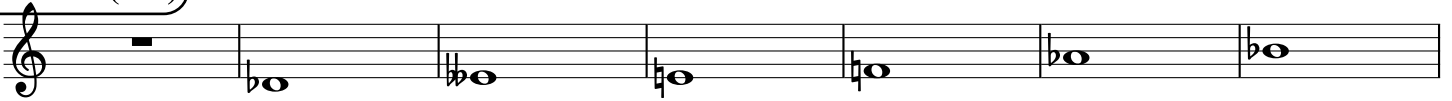
Root = 1 (C#)

1:0 1:1 1:3 1:4 1:7 1:9



Root = 1 (Db)

1:0 1:1 1:3 1:4 1:7 1:9



Root = 2 (D)

2:0 2:1 2:3 2:4 2:7 2:9



Root = 3 (D#)

3:0 3:1 3:3 3:4 3:7 3:9



Root = 3 (Eb)

3:0 3:1 3:3 3:4 3:7 3:9



Root = 4 (E)

4:0 4:1 4:3 4:4 4:7 4:9



Root = 5 (F)

5:0 5:1 5:3 5:4 5:7 5:9



Root = 6 (F#)

6:0 6:1 6:3 6:4 6:7 6:9



Root = 6 (Gb)

6:0 6:1 6:3 6:4 6:7 6:9

A musical staff in treble clef showing seven notes. The first note is a whole rest. The subsequent notes are: Gb (flat), G (natural), Ab (flat), Bb (flat), C (natural), D (natural), and Eb (flat).

Root = 7 (G)

7:0 7:1 7:3 7:4 7:7 7:9

A musical staff in treble clef showing seven notes. The first note is a whole rest. The subsequent notes are: G (natural), Ab (flat), Bb (flat), C (natural), D (natural), Eb (flat), and F (natural).

Root = 8 (G#)

8:0 8:1 8:3 8:4 8:7 8:9

A musical staff in treble clef showing seven notes. The first note is a whole rest. The subsequent notes are: G# (sharp), Ab (flat), Bb (flat), C (natural), D (natural), Eb (flat), and F# (sharp).

Root = 8 (Ab)

8:0 8:1 8:3 8:4 8:7 8:9

A musical staff in treble clef showing seven notes. The first note is a whole rest. The subsequent notes are: Ab (flat), Bb (flat), C (natural), D (natural), Eb (flat), F (natural), and G (natural).

Root = 9 (A)

9:0 9:1 9:3 9:4 9:7 9:9

A musical staff in treble clef showing seven notes. The first note is a whole rest. The subsequent notes are: A (natural), Bb (flat), C (natural), D (natural), Eb (flat), F (natural), and G# (sharp).

Root = 10 (A#)

10:0 10:1 10:3 10:4 10:7 10:9

A musical staff in treble clef showing seven notes. The first note is a whole rest. The subsequent notes are: A# (sharp), Bb (flat), C (natural), D (natural), Eb (flat), F# (sharp), and G# (sharp).

Root = 10 (Bb)

10:0 10:1 10:3 10:4 10:7 10:9

A musical staff in treble clef showing seven notes. The first note is a whole rest. The subsequent notes are: Bb (flat), C (natural), D (natural), Eb (flat), F (natural), G (natural), and Ab (flat).

Root = 11 (B)

11:0 11:1 11:3 11:4 11:7 11:9

A musical staff in treble clef showing seven notes. The first note is a whole rest. The subsequent notes are: B (natural), C (natural), D (natural), Eb (flat), F# (sharp), G# (sharp), and A (natural).