

# Chord Type 0 1 2 3 9 10 in All Keys

Treble Clef, 6 Notes, Diatonic Scale Degrees: 1 2 2 3 6 7

Stanley Jordan

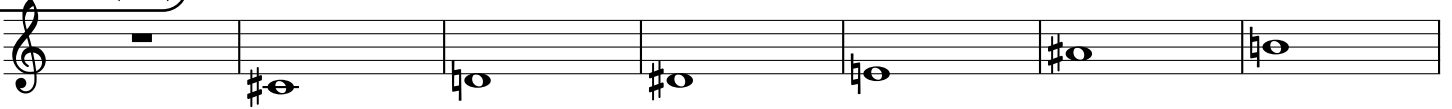
Root = 0 (C)

0:0      0:1      0:2      0:3      0:9      0:10



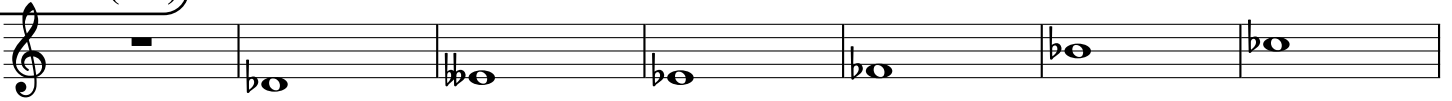
Root = 1 (C#)

1:0      1:1      1:2      1:3      1:9      1:10



Root = 1 (Db)

1:0      1:1      1:2      1:3      1:9      1:10



Root = 2 (D)

2:0      2:1      2:2      2:3      2:9      2:10



Root = 3 (D#)

3:0      3:1      3:2      3:3      3:9      3:10



Root = 3 (Eb)

3:0      3:1      3:2      3:3      3:9      3:10



Root = 4 (E)

4:0      4:1      4:2      4:3      4:9      4:10



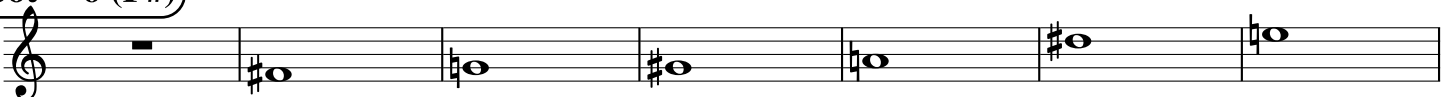
Root = 5 (F)

5:0      5:1      5:2      5:3      5:9      5:10



Root = 6 (F#)

6:0      6:1      6:2      6:3      6:9      6:10



**Root = 6 (Gb)**

6:0      6:1      6:2      6:3      6:9      6:10

A musical staff in treble clef showing seven notes. The first note is a whole rest. The subsequent notes are: Gb2 (flat), Gb3 (flat), Gb4 (flat), Gb5 (flat), Gb6 (flat), Gb7 (flat), and Gb8 (flat).

**Root = 7 (G)**

7:0      7:1      7:2      7:3      7:9      7:10

A musical staff in treble clef showing seven notes. The first note is a whole rest. The subsequent notes are: G2 (natural), G3 (natural), G4 (natural), G5 (natural), G6 (natural), G7 (natural), and G8 (natural).

**Root = 8 (G#)**

8:0      8:1      8:2      8:3      8:9      8:10

A musical staff in treble clef showing seven notes. The first note is a whole rest. The subsequent notes are: G#2 (sharp), G#3 (sharp), G#4 (sharp), G#5 (sharp), G#6 (sharp), G#7 (sharp), and G#8 (sharp).

**Root = 8 (Ab)**

8:0      8:1      8:2      8:3      8:9      8:10

A musical staff in treble clef showing seven notes. The first note is a whole rest. The subsequent notes are: Ab2 (flat), Ab3 (flat), Ab4 (flat), Ab5 (flat), Ab6 (flat), Ab7 (flat), and Ab8 (flat).

**Root = 9 (A)**

9:0      9:1      9:2      9:3      9:9      9:10

A musical staff in treble clef showing seven notes. The first note is a whole rest. The subsequent notes are: A2 (natural), A3 (natural), A4 (natural), A5 (natural), A6 (natural), A7 (sharp), and A8 (flat).

**Root = 10 (A#)**

10:0      10:1      10:2      10:3      10:9      10:10

A musical staff in treble clef showing seven notes. The first note is a whole rest. The subsequent notes are: A#2 (sharp), A#3 (sharp), A#4 (sharp), A#5 (sharp), A#6 (sharp), A#7 (sharp), and A#8 (sharp).

**Root = 10 (Bb)**

10:0      10:1      10:2      10:3      10:9      10:10

A musical staff in treble clef showing seven notes. The first note is a whole rest. The subsequent notes are: Bb2 (flat), Bb3 (flat), Bb4 (flat), Bb5 (flat), Bb6 (flat), Bb7 (flat), and Bb8 (flat).

**Root = 11 (B)**

11:0      11:1      11:2      11:3      11:9      11:10

A musical staff in treble clef showing seven notes. The first note is a whole rest. The subsequent notes are: B2 (natural), B3 (natural), B4 (natural), B5 (sharp), B6 (flat), B7 (sharp), and B8 (flat).