

Chord Type 0 1 2 3 4 8 in All Keys

Treble Clef, 6 Notes, Diatonic Scale Degrees: 1 2 3 3 5

Stanley Jordan

Root = 0 (C)

0:0

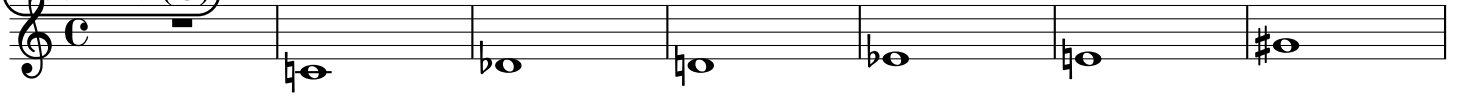
0:1

0:2

0:3

0:4

0:8



Root = 1 (C#)

1:0

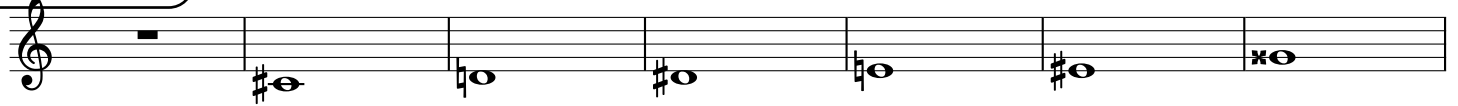
1:1

1:2

1:3

1:4

1:8



Root = 1 (Db)

1:0

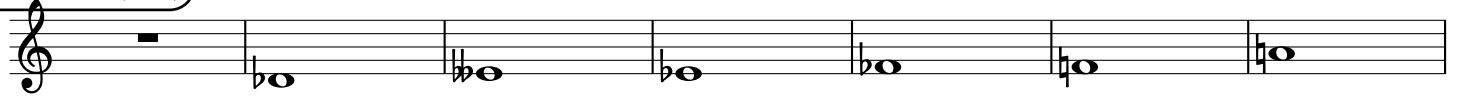
1:1

1:2

1:3

1:4

1:8



Root = 2 (D)

2:0

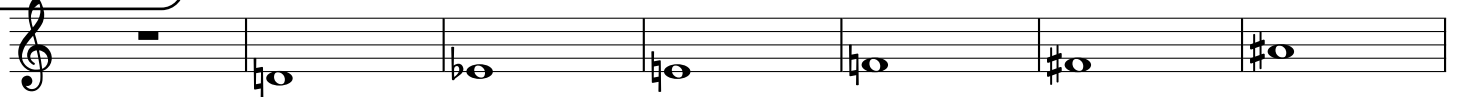
2:1

2:2

2:3

2:4

2:8



Root = 3 (D#)

3:0

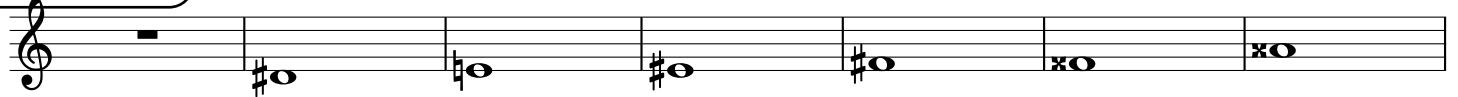
3:1

3:2

3:3

3:4

3:8



Root = 3 (Eb)

3:0

3:1

3:2

3:3

3:4

3:8



Root = 4 (E)

4:0

4:1

4:2

4:3

4:4

4:8



Root = 5 (F)

5:0

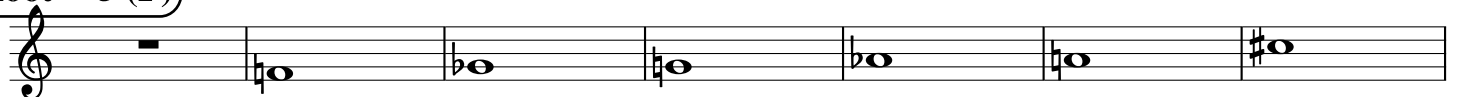
5:1

5:2

5:3

5:4

5:8



Root = 6 (F#)

6:0

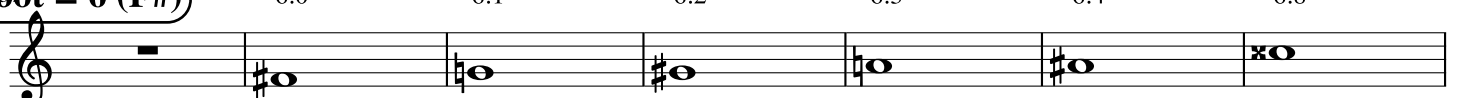
6:1

6:2

6:3

6:4

6:8



Root = 6 (Gb)

6:0 6:1 6:2 6:3 6:4 6:8

A musical staff in treble clef showing notes for ratios 6:0, 6:1, 6:2, 6:3, 6:4, and 6:8. The notes are: 6:0 (rest), 6:1 (Bb), 6:2 (Bb), 6:3 (Bb), 6:4 (Bb), and 6:8 (Bb).

Root = 7 (G)

7:0 7:1 7:2 7:3 7:4 7:8

A musical staff in treble clef showing notes for ratios 7:0, 7:1, 7:2, 7:3, 7:4, and 7:8. The notes are: 7:0 (rest), 7:1 (Bb), 7:2 (Bb), 7:3 (Bb), 7:4 (Bb), and 7:8 (B).

Root = 8 (G#)

8:0 8:1 8:2 8:3 8:4 8:8

A musical staff in treble clef showing notes for ratios 8:0, 8:1, 8:2, 8:3, 8:4, and 8:8. The notes are: 8:0 (rest), 8:1 (B#), 8:2 (B#), 8:3 (B#), 8:4 (B#), and 8:8 (B#).

Root = 8 (Ab)

8:0 8:1 8:2 8:3 8:4 8:8

A musical staff in treble clef showing notes for ratios 8:0, 8:1, 8:2, 8:3, 8:4, and 8:8. The notes are: 8:0 (rest), 8:1 (Bb), 8:2 (Bb), 8:3 (Bb), 8:4 (Bb), and 8:8 (Bb).

Root = 9 (A)

9:0 9:1 9:2 9:3 9:4 9:8

A musical staff in treble clef showing notes for ratios 9:0, 9:1, 9:2, 9:3, 9:4, and 9:8. The notes are: 9:0 (rest), 9:1 (Bb), 9:2 (Bb), 9:3 (Bb), 9:4 (B#), and 9:8 (B#).

Root = 10 (A#)

10:0 10:1 10:2 10:3 10:4 10:8

A musical staff in treble clef showing notes for ratios 10:0, 10:1, 10:2, 10:3, 10:4, and 10:8. The notes are: 10:0 (rest), 10:1 (B#), 10:2 (B#), 10:3 (B#), 10:4 (B#), and 10:8 (B#).

Root = 10 (Bb)

10:0 10:1 10:2 10:3 10:4 10:8

A musical staff in treble clef showing notes for ratios 10:0, 10:1, 10:2, 10:3, 10:4, and 10:8. The notes are: 10:0 (rest), 10:1 (Bb), 10:2 (Bb), 10:3 (Bb), 10:4 (Bb), and 10:8 (B).

Root = 11 (B)

11:0 11:1 11:2 11:3 11:4 11:8

A musical staff in treble clef showing notes for ratios 11:0, 11:1, 11:2, 11:3, 11:4, and 11:8. The notes are: 11:0 (rest), 11:1 (Bb), 11:2 (Bb), 11:3 (B#), 11:4 (B#), and 11:8 (B#).