

Chord Type 0 4 7 9 10 in All Keys

Treble Clef, 5 Notes, Diatonic Scale Degrees: 13567

Stanley Jordan

Root = 0 (C)

0:0

0:4

0:7

0:9

0:10



Root = 1 (C#)

1:0

1:4

1:7

1:9

1:10



Root = 1 (Db)

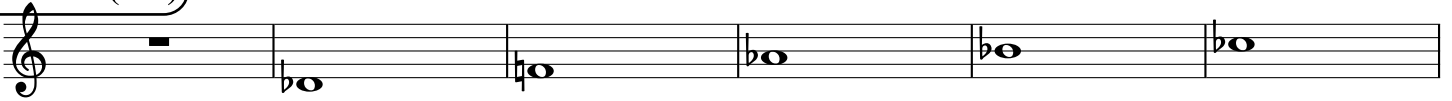
1:0

1:4

1:7

1:9

1:10



Root = 2 (D)

2:0

2:4

2:7

2:9

2:10



Root = 3 (D#)

3:0

3:4

3:7

3:9

3:10



Root = 3 (Eb)

3:0

3:4

3:7

3:9

3:10



Root = 4 (E)

4:0

4:4

4:7

4:9

4:10



Root = 5 (F)

5:0

5:4

5:7

5:9

5:10



Root = 6 (F#)

6:0

6:4

6:7

6:9

6:10



Root = 6 (Gb)

6:0 6:4 6:7 6:9 6:10

A musical staff in treble clef with a flat key signature. The first measure contains a whole rest. The following five measures contain whole notes with the following accidentals: flat, flat, flat, flat, and flat.

Root = 7 (G)

7:0 7:4 7:7 7:9 7:10

A musical staff in treble clef with a natural key signature. The first measure contains a whole rest. The following five measures contain whole notes with the following accidentals: natural, natural, natural, flat, and natural.

Root = 8 (G#)

8:0 8:4 8:7 8:9 8:10

A musical staff in treble clef with a sharp key signature. The first measure contains a whole rest. The following five measures contain whole notes with the following accidentals: sharp, sharp, sharp, sharp, and sharp.

Root = 8 (Ab)

8:0 8:4 8:7 8:9 8:10

A musical staff in treble clef with a flat key signature. The first measure contains a whole rest. The following five measures contain whole notes with the following accidentals: flat, flat, flat, flat, and flat.

Root = 9 (A)

9:0 9:4 9:7 9:9 9:10

A musical staff in treble clef with a natural key signature. The first measure contains a whole rest. The following five measures contain whole notes with the following accidentals: natural, sharp, flat, sharp, and flat.

Root = 10 (A#)

10:0 10:4 10:7 10:9 10:10

A musical staff in treble clef with a sharp key signature. The first measure contains a whole rest. The following five measures contain whole notes with the following accidentals: sharp, sharp, sharp, sharp, and sharp.

Root = 10 (Bb)

10:0 10:4 10:7 10:9 10:10

A musical staff in treble clef with a flat key signature. The first measure contains a whole rest. The following five measures contain whole notes with the following accidentals: flat, flat, flat, flat, and flat.

Root = 11 (B)

11:0 11:4 11:7 11:9 11:10

A musical staff in treble clef with a natural key signature. The first measure contains a whole rest. The following five measures contain whole notes with the following accidentals: natural, sharp, sharp, sharp, and flat.