

Chord Type 0 4 5 7 10 in All Keys

Treble Clef, 5 Notes, Diatonic Scale Degrees: 13457

Stanley Jordan

Root = 0 (C)

0:0

0:4

0:5

0:7

0:10



Root = 1 (C#)

1:0

1:4

1:5

1:7

1:10



Root = 1 (Db)

1:0

1:4

1:5

1:7

1:10



Root = 2 (D)

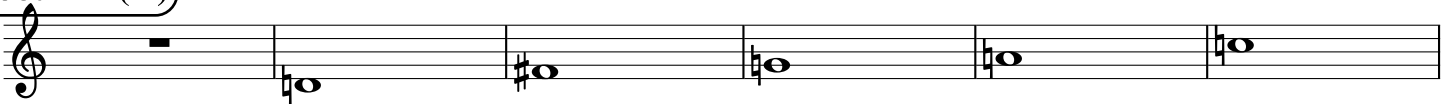
2:0

2:4

2:5

2:7

2:10



Root = 3 (D#)

3:0

3:4

3:5

3:7

3:10



Root = 3 (Eb)

3:0

3:4

3:5

3:7

3:10



Root = 4 (E)

4:0

4:4

4:5

4:7

4:10



Root = 5 (F)

5:0

5:4

5:5

5:7

5:10



Root = 6 (F#)

6:0

6:4

6:5

6:7

6:10



Root = 6 (Gb)

6:0 6:4 6:5 6:7 6:10

A musical staff in treble clef showing five notes: a whole rest, a flat G (6:0), a flat G with a sharp 4 (6:4), a flat G with a sharp 5 (6:5), a flat G with a sharp 7 (6:7), and a flat G with a sharp 10 (6:10).

Root = 7 (G)

7:0 7:4 7:5 7:7 7:10

A musical staff in treble clef showing five notes: a whole rest, a G (7:0), a G with a sharp 4 (7:4), a G with a sharp 5 (7:5), a G with a sharp 7 (7:7), and a G with a sharp 10 (7:10).

Root = 8 (G#)

8:0 8:4 8:5 8:7 8:10

A musical staff in treble clef showing five notes: a whole rest, a G# (8:0), a G# with a sharp 4 (8:4), a G# with a sharp 5 (8:5), a G# with a sharp 7 (8:7), and a G# with a sharp 10 (8:10).

Root = 8 (Ab)

8:0 8:4 8:5 8:7 8:10

A musical staff in treble clef showing five notes: a whole rest, a flat G (8:0), a flat G with a sharp 4 (8:4), a flat G with a sharp 5 (8:5), a flat G with a sharp 7 (8:7), and a flat G with a sharp 10 (8:10).

Root = 9 (A)

9:0 9:4 9:5 9:7 9:10

A musical staff in treble clef showing five notes: a whole rest, a G# (9:0), a G# with a sharp 4 (9:4), a G# with a sharp 5 (9:5), a G# with a sharp 7 (9:7), and a G# with a sharp 10 (9:10).

Root = 10 (A#)

10:0 10:4 10:5 10:7 10:10

A musical staff in treble clef showing five notes: a whole rest, an A# (10:0), an A# with a sharp 4 (10:4), an A# with a sharp 5 (10:5), an A# with a sharp 7 (10:7), and an A# with a sharp 10 (10:10).

Root = 10 (Bb)

10:0 10:4 10:5 10:7 10:10

A musical staff in treble clef showing five notes: a whole rest, a flat B (10:0), a flat B with a sharp 4 (10:4), a flat B with a sharp 5 (10:5), a flat B with a sharp 7 (10:7), and a flat B with a sharp 10 (10:10).

Root = 11 (B)

11:0 11:4 11:5 11:7 11:10

A musical staff in treble clef showing five notes: a whole rest, a B (11:0), a B with a sharp 4 (11:4), a B with a sharp 5 (11:5), a B with a sharp 7 (11:7), and a B with a sharp 10 (11:10).