

# Chord Type 0 3 5 7 10 in All Keys

Treble Clef, 5 Notes, Diatonic Scale Degrees: 13457

Stanley Jordan

Root = 0 (C)

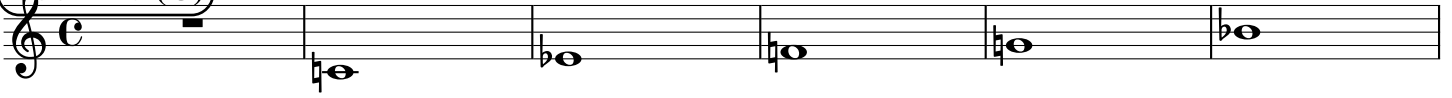
0:0

0:3

0:5

0:7

0:10



Root = 1 (C#)

1:0

1:3

1:5

1:7

1:10



Root = 1 (Db)

1:0

1:3

1:5

1:7

1:10



Root = 2 (D)

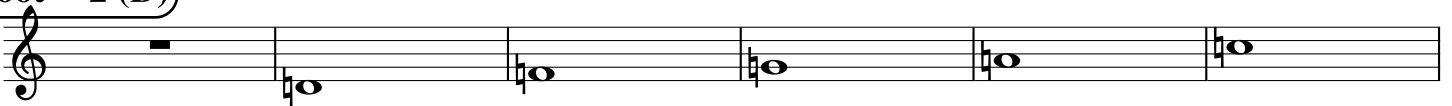
2:0

2:3

2:5

2:7

2:10



Root = 3 (D#)

3:0

3:3

3:5

3:7

3:10



Root = 3 (Eb)

3:0

3:3

3:5

3:7

3:10



Root = 4 (E)

4:0

4:3

4:5

4:7

4:10



Root = 5 (F)

5:0

5:3

5:5

5:7

5:10



Root = 6 (F#)

6:0

6:3

6:5

6:7

6:10



**Root = 6 (Gb)**

6:0                      6:3                      6:5                      6:7                      6:10

A musical staff in treble clef showing five notes: a whole rest, a G-flat, a G-flat with a flat, a G-flat with a sharp, a G-flat with a double sharp, and a G-flat with a double sharp and a flat.

**Root = 7 (G)**

7:0                      7:3                      7:5                      7:7                      7:10

A musical staff in treble clef showing five notes: a whole rest, a G, a G with a flat, a G with a sharp, a G with a double sharp, and a G with a double sharp and a flat.

**Root = 8 (G#)**

8:0                      8:3                      8:5                      8:7                      8:10

A musical staff in treble clef showing five notes: a whole rest, a G-sharp, a G-sharp with a flat, a G-sharp with a sharp, a G-sharp with a double sharp, and a G-sharp with a double sharp and a flat.

**Root = 8 (Ab)**

8:0                      8:3                      8:5                      8:7                      8:10

A musical staff in treble clef showing five notes: a whole rest, an A-flat, an A-flat with a flat, an A-flat with a sharp, an A-flat with a double sharp, and an A-flat with a double sharp and a flat.

**Root = 9 (A)**

9:0                      9:3                      9:5                      9:7                      9:10

A musical staff in treble clef showing five notes: a whole rest, an A, an A with a flat, an A with a sharp, an A with a double sharp, and an A with a double sharp and a flat.

**Root = 10 (A#)**

10:0                      10:3                      10:5                      10:7                      10:10

A musical staff in treble clef showing five notes: a whole rest, an A-sharp, an A-sharp with a flat, an A-sharp with a sharp, an A-sharp with a double sharp, and an A-sharp with a double sharp and a flat.

**Root = 10 (Bb)**

10:0                      10:3                      10:5                      10:7                      10:10

A musical staff in treble clef showing five notes: a whole rest, a B-flat, a B-flat with a flat, a B-flat with a sharp, a B-flat with a double sharp, and a B-flat with a double sharp and a flat.

**Root = 11 (B)**

11:0                      11:3                      11:5                      11:7                      11:10

A musical staff in treble clef showing five notes: a whole rest, a B, a B with a flat, a B with a sharp, a B with a double sharp, and a B with a double sharp and a flat.