

Chord Type 0 3 5 6 7 in All Keys

Treble Clef, 5 Notes, Diatonic Scale Degrees: 13445

Stanley Jordan

Root = 0 (C)

0:0

0:3

0:5

0:6

0:7



Root = 1 (C#)

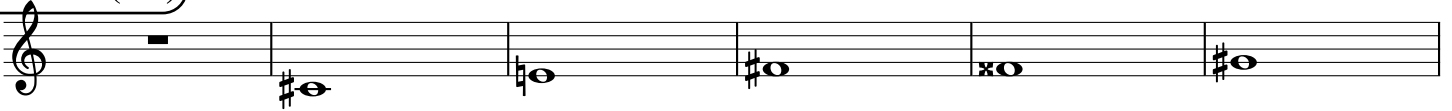
1:0

1:3

1:5

1:6

1:7



Root = 1 (Db)

1:0

1:3

1:5

1:6

1:7



Root = 2 (D)

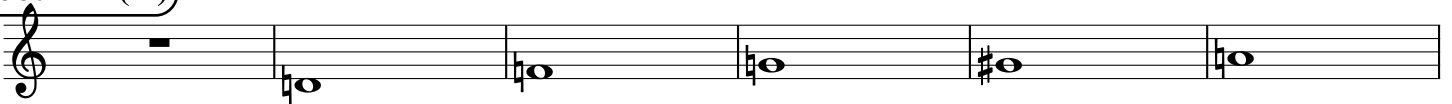
2:0

2:3

2:5

2:6

2:7



Root = 3 (D#)

3:0

3:3

3:5

3:6

3:7



Root = 3 (Eb)

3:0

3:3

3:5

3:6

3:7



Root = 4 (E)

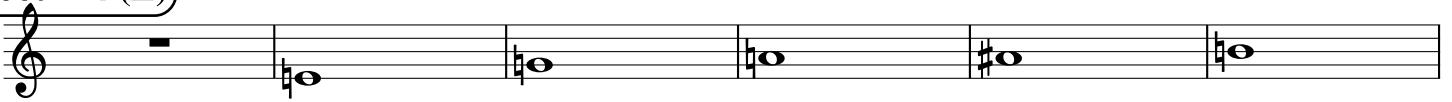
4:0

4:3

4:5

4:6

4:7



Root = 5 (F)

5:0

5:3

5:5

5:6

5:7



Root = 6 (F#)

6:0

6:3

6:5

6:6

6:7



Root = 6 (Gb)

6:0 6:3 6:5 6:6 6:7

A musical staff in treble clef with a flat key signature. The first measure contains a whole rest. The following five measures contain whole notes with the following accidentals: flat, double flat, flat, natural, and flat.

Root = 7 (G)

7:0 7:3 7:5 7:6 7:7

A musical staff in treble clef with a natural key signature. The first measure contains a whole rest. The following five measures contain whole notes with the following accidentals: flat, flat, natural, sharp, and flat.

Root = 8 (G#)

8:0 8:3 8:5 8:6 8:7

A musical staff in treble clef with a sharp key signature. The first measure contains a whole rest. The following five measures contain whole notes with the following accidentals: sharp, flat, sharp, double sharp, and sharp.

Root = 8 (Ab)

8:0 8:3 8:5 8:6 8:7

A musical staff in treble clef with a flat key signature. The first measure contains a whole rest. The following five measures contain whole notes with the following accidentals: flat, flat, flat, flat, and flat.

Root = 9 (A)

9:0 9:3 9:5 9:6 9:7

A musical staff in treble clef with a natural key signature. The first measure contains a whole rest. The following five measures contain whole notes with the following accidentals: flat, flat, flat, sharp, and flat.

Root = 10 (A#)

10:0 10:3 10:5 10:6 10:7

A musical staff in treble clef with a sharp key signature. The first measure contains a whole rest. The following five measures contain whole notes with the following accidentals: sharp, sharp, sharp, double sharp, and sharp.

Root = 10 (Bb)

10:0 10:3 10:5 10:6 10:7

A musical staff in treble clef with a flat key signature. The first measure contains a whole rest. The following five measures contain whole notes with the following accidentals: flat, flat, flat, flat, and flat.

Root = 11 (B)

11:0 11:3 11:5 11:6 11:7

A musical staff in treble clef with a natural key signature. The first measure contains a whole rest. The following five measures contain whole notes with the following accidentals: flat, flat, flat, sharp, and sharp.