

Chord Type 0 3 4 7 10 in All Keys

Treble Clef, 5 Notes, Diatonic Scale Degrees: 12357

Stanley Jordan

Root = 0 (C)

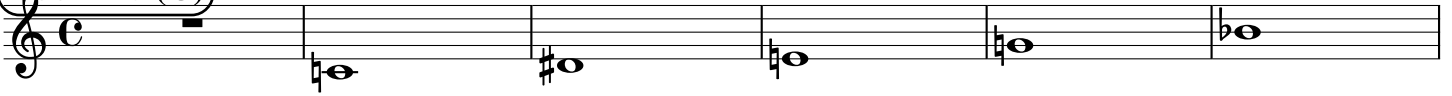
0:0

0:3

0:4

0:7

0:10



Root = 1 (C#)

1:0

1:3

1:4

1:7

1:10



Root = 1 (Db)

1:0

1:3

1:4

1:7

1:10



Root = 2 (D)

2:0

2:3

2:4

2:7

2:10



Root = 3 (D#)

3:0

3:3

3:4

3:7

3:10



Root = 3 (Eb)

3:0

3:3

3:4

3:7

3:10



Root = 4 (E)

4:0

4:3

4:4

4:7

4:10



Root = 5 (F)

5:0

5:3

5:4

5:7

5:10



Root = 6 (F#)

6:0

6:3

6:4

6:7

6:10



Root = 6 (Gb)

6:0 6:3 6:4 6:7 6:10

Musical staff for Root = 6 (Gb). The staff shows five measures. The first measure has a whole rest. The second measure has a whole note Gb (flat 6th line). The third measure has a whole note Gb (flat 6th line). The fourth measure has a whole note Gb (flat 6th line). The fifth measure has a whole note Gb (flat 6th line). The sixth measure has a whole note Gb (flat 6th line).

Root = 7 (G)

7:0 7:3 7:4 7:7 7:10

Musical staff for Root = 7 (G). The staff shows five measures. The first measure has a whole rest. The second measure has a whole note G (5th line). The third measure has a whole note G (5th line). The fourth measure has a whole note G (5th line). The fifth measure has a whole note G (5th line). The sixth measure has a whole note G (5th line).

Root = 8 (G#)

8:0 8:3 8:4 8:7 8:10

Musical staff for Root = 8 (G#). The staff shows five measures. The first measure has a whole rest. The second measure has a whole note G# (5th line). The third measure has a whole note G# (5th line). The fourth measure has a whole note G# (5th line). The fifth measure has a whole note G# (5th line). The sixth measure has a whole note G# (5th line).

Root = 8 (Ab)

8:0 8:3 8:4 8:7 8:10

Musical staff for Root = 8 (Ab). The staff shows five measures. The first measure has a whole rest. The second measure has a whole note Ab (flat 5th line). The third measure has a whole note Ab (flat 5th line). The fourth measure has a whole note Ab (flat 5th line). The fifth measure has a whole note Ab (flat 5th line). The sixth measure has a whole note Ab (flat 5th line).

Root = 9 (A)

9:0 9:3 9:4 9:7 9:10

Musical staff for Root = 9 (A). The staff shows five measures. The first measure has a whole rest. The second measure has a whole note A (6th line). The third measure has a whole note A (6th line). The fourth measure has a whole note A (6th line). The fifth measure has a whole note A (6th line). The sixth measure has a whole note A (6th line).

Root = 10 (A#)

10:0 10:3 10:4 10:7 10:10

Musical staff for Root = 10 (A#). The staff shows five measures. The first measure has a whole rest. The second measure has a whole note A# (6th line). The third measure has a whole note A# (6th line). The fourth measure has a whole note A# (6th line). The fifth measure has a whole note A# (6th line). The sixth measure has a whole note A# (6th line).

Root = 10 (Bb)

10:0 10:3 10:4 10:7 10:10

Musical staff for Root = 10 (Bb). The staff shows five measures. The first measure has a whole rest. The second measure has a whole note Bb (flat 6th line). The third measure has a whole note Bb (flat 6th line). The fourth measure has a whole note Bb (flat 6th line). The fifth measure has a whole note Bb (flat 6th line). The sixth measure has a whole note Bb (flat 6th line).

Root = 11 (B)

11:0 11:3 11:4 11:7 11:10

Musical staff for Root = 11 (B). The staff shows five measures. The first measure has a whole rest. The second measure has a whole note B (7th line). The third measure has a whole note B (7th line). The fourth measure has a whole note B (7th line). The fifth measure has a whole note B (7th line). The sixth measure has a whole note B (7th line).