

# Chord Type 0 3 4 6 7 in All Keys

Treble Clef, 5 Notes, Diatonic Scale Degrees: 12345

Stanley Jordan

Root = 0 (C)

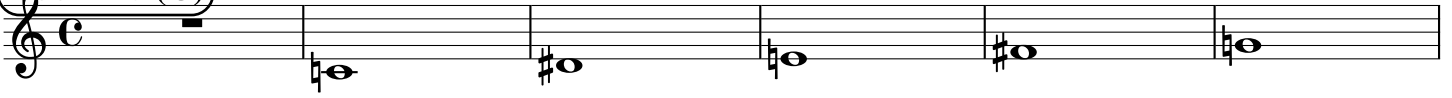
0:0

0:3

0:4

0:6

0:7



Root = 1 (C#)

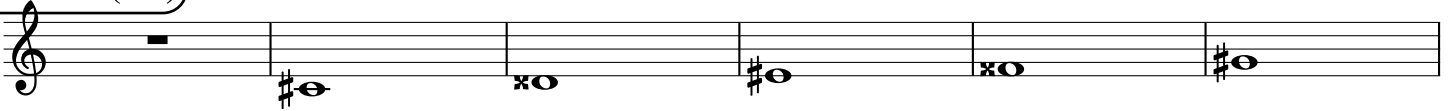
1:0

1:3

1:4

1:6

1:7



Root = 1 (Db)

1:0

1:3

1:4

1:6

1:7



Root = 2 (D)

2:0

2:3

2:4

2:6

2:7



Root = 3 (D#)

3:0

3:3

3:4

3:6

3:7



Root = 3 (Eb)

3:0

3:3

3:4

3:6

3:7



Root = 4 (E)

4:0

4:3

4:4

4:6

4:7



Root = 5 (F)

5:0

5:3

5:4

5:6

5:7



Root = 6 (F#)

6:0

6:3

6:4

6:6

6:7



**Root = 6 (Gb)**

6:0                  6:3                  6:4                  6:6                  6:7

A musical staff in treble clef with a flat key signature. The notes are: a whole rest (6:0), a flat G (6:3), a flat G with a flat (6:4), a flat G with a sharp (6:6), and a flat G with a sharp and a flat (6:7).

**Root = 7 (G)**

7:0                  7:3                  7:4                  7:6                  7:7

A musical staff in treble clef with a natural key signature. The notes are: a whole rest (7:0), a G with a flat (7:3), a G with a sharp (7:4), a G with a flat and a sharp (7:6), and a G with a sharp and a flat (7:7).

**Root = 8 (G#)**

8:0                  8:3                  8:4                  8:6                  8:7

A musical staff in treble clef with a sharp key signature. The notes are: a whole rest (8:0), a G with a sharp (8:3), a G with a sharp and a flat (8:4), a G with a sharp and a sharp (8:6), and a G with a sharp and a sharp and a flat (8:7).

**Root = 8 (Ab)**

8:0                  8:3                  8:4                  8:6                  8:7

A musical staff in treble clef with a flat key signature. The notes are: a whole rest (8:0), a flat G (8:3), a flat G with a flat (8:4), a flat G with a sharp (8:6), and a flat G with a sharp and a flat (8:7).

**Root = 9 (A)**

9:0                  9:3                  9:4                  9:6                  9:7

A musical staff in treble clef with a natural key signature. The notes are: a whole rest (9:0), a G with a flat (9:3), a G with a sharp (9:4), a G with a sharp and a sharp (9:6), and a G with a sharp and a flat (9:7).

**Root = 10 (A#)**

10:0                  10:3                  10:4                  10:6                  10:7

A musical staff in treble clef with a sharp key signature. The notes are: a whole rest (10:0), a G with a sharp (10:3), a G with a sharp and a flat (10:4), a G with a sharp and a sharp (10:6), and a G with a sharp and a sharp and a flat (10:7).

**Root = 10 (Bb)**

10:0                  10:3                  10:4                  10:6                  10:7

A musical staff in treble clef with a flat key signature. The notes are: a whole rest (10:0), a flat B (10:3), a B with a sharp (10:4), a flat B with a sharp (10:6), and a flat B with a sharp and a flat (10:7).

**Root = 11 (B)**

11:0                  11:3                  11:4                  11:6                  11:7

A musical staff in treble clef with a natural key signature. The notes are: a whole rest (11:0), a B with a flat (11:3), a B with a sharp and a flat (11:4), a B with a sharp and a sharp (11:6), and a B with a sharp and a sharp and a flat (11:7).