

Chord Type 0 2 7 8 9 in All Keys

Treble Clef, 5 Notes, Diatonic Scale Degrees: 1 2 5 6 6

Stanley Jordan

Root = 0 (C)

0:0

0:2

0:7

0:8

0:9



Root = 1 (C#)

1:0

1:2

1:7

1:8

1:9



Root = 1 (Db)

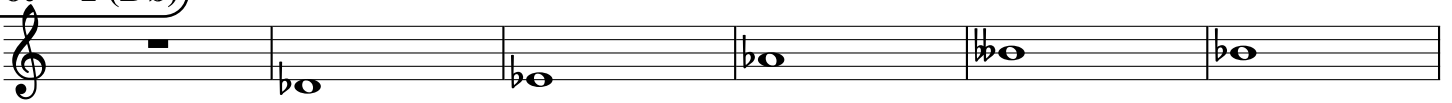
1:0

1:2

1:7

1:8

1:9



Root = 2 (D)

2:0

2:2

2:7

2:8

2:9



Root = 3 (D#)

3:0

3:2

3:7

3:8

3:9



Root = 3 (Eb)

3:0

3:2

3:7

3:8

3:9



Root = 4 (E)

4:0

4:2

4:7

4:8

4:9



Root = 5 (F)

5:0

5:2

5:7

5:8

5:9



Root = 6 (F#)

6:0

6:2

6:7

6:8

6:9



Root = 6 (Gb)

6:0 6:2 6:7 6:8 6:9

A musical staff in treble clef showing five notes. The first measure has a whole rest. The second measure has a G-flat note. The third measure has a G-flat note with a flat sign. The fourth measure has a G note with a flat sign. The fifth measure has a G note with two flat signs. The sixth measure has a G note with a flat sign.

Root = 7 (G)

7:0 7:2 7:7 7:8 7:9

A musical staff in treble clef showing five notes. The first measure has a whole rest. The second measure has a G note with a flat sign. The third measure has a G note with a flat sign. The fourth measure has a G note with a flat sign. The fifth measure has a G note with a flat sign. The sixth measure has a G note with a flat sign.

Root = 8 (G#)

8:0 8:2 8:7 8:8 8:9

A musical staff in treble clef showing five notes. The first measure has a whole rest. The second measure has a G-sharp note. The third measure has a G-sharp note. The fourth measure has a G-sharp note. The fifth measure has a G-sharp note with a flat sign. The sixth measure has a G-sharp note.

Root = 8 (Ab)

8:0 8:2 8:7 8:8 8:9

A musical staff in treble clef showing five notes. The first measure has a whole rest. The second measure has a G-flat note. The third measure has a G-flat note. The fourth measure has a G-flat note with a flat sign. The fifth measure has a G-flat note with a flat sign. The sixth measure has a G-flat note with a flat sign.

Root = 9 (A)

9:0 9:2 9:7 9:8 9:9

A musical staff in treble clef showing five notes. The first measure has a whole rest. The second measure has an A note with a flat sign. The third measure has an A note with a flat sign. The fourth measure has an A note with a flat sign. The fifth measure has an A note with a flat sign. The sixth measure has an A note with a sharp sign.

Root = 10 (A#)

10:0 10:2 10:7 10:8 10:9

A musical staff in treble clef showing five notes. The first measure has a whole rest. The second measure has an A-sharp note. The third measure has an A-sharp note. The fourth measure has an A-sharp note. The fifth measure has an A-sharp note. The sixth measure has an A-sharp note with a double sharp sign.

Root = 10 (Bb)

10:0 10:2 10:7 10:8 10:9

A musical staff in treble clef showing five notes. The first measure has a whole rest. The second measure has a B-flat note. The third measure has a B-flat note with a flat sign. The fourth measure has a B-flat note with a flat sign. The fifth measure has a B-flat note with a flat sign. The sixth measure has a B-flat note with a flat sign.

Root = 11 (B)

11:0 11:2 11:7 11:8 11:9

A musical staff in treble clef showing five notes. The first measure has a whole rest. The second measure has a B note with a flat sign. The third measure has a B note with a sharp sign. The fourth measure has a B note with a sharp sign. The fifth measure has a B note with a sharp sign. The sixth measure has a B note with a sharp sign.