

Chord Type 0 2 4 10 11 in All Keys

Treble Clef, 5 Notes, Diatonic Scale Degrees: 12367

Stanley Jordan

Root = 0 (C)

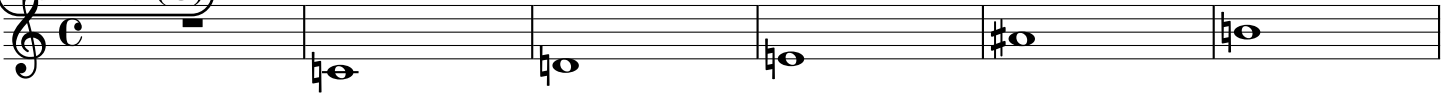
0:0

0:2

0:4

0:10

0:11



Root = 1 (C#)

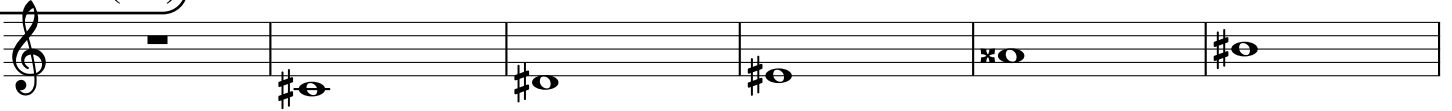
1:0

1:2

1:4

1:10

1:11



Root = 1 (Db)

1:0

1:2

1:4

1:10

1:11



Root = 2 (D)

2:0

2:2

2:4

2:10

2:11



Root = 3 (D#)

3:0

3:2

3:4

3:10

3:11



Root = 3 (Eb)

3:0

3:2

3:4

3:10

3:11



Root = 4 (E)

4:0

4:2

4:4

4:10

4:11



Root = 5 (F)

5:0

5:2

5:4

5:10

5:11



Root = 6 (F#)

6:0

6:2

6:4

6:10

6:11



Root = 6 (Gb)

6:0 6:2 6:4 6:10 6:11

A musical staff in treble clef showing five notes. The first note is a whole rest. The second note is Gb (6:0). The third note is Gb (6:2). The fourth note is Gb (6:4). The fifth note is Gb (6:10). The sixth note is Gb (6:11).

Root = 7 (G)

7:0 7:2 7:4 7:10 7:11

A musical staff in treble clef showing five notes. The first note is a whole rest. The second note is G (7:0). The third note is G (7:2). The fourth note is G (7:4). The fifth note is G (7:10). The sixth note is G (7:11).

Root = 8 (G#)

8:0 8:2 8:4 8:10 8:11

A musical staff in treble clef showing five notes. The first note is a whole rest. The second note is G# (8:0). The third note is G# (8:2). The fourth note is G# (8:4). The fifth note is G# (8:10). The sixth note is G# (8:11).

Root = 8 (Ab)

8:0 8:2 8:4 8:10 8:11

A musical staff in treble clef showing five notes. The first note is a whole rest. The second note is Ab (8:0). The third note is Ab (8:2). The fourth note is Ab (8:4). The fifth note is Ab (8:10). The sixth note is Ab (8:11).

Root = 9 (A)

9:0 9:2 9:4 9:10 9:11

A musical staff in treble clef showing five notes. The first note is a whole rest. The second note is A (9:0). The third note is A (9:2). The fourth note is A (9:4). The fifth note is A (9:10). The sixth note is A (9:11).

Root = 10 (A#)

10:0 10:2 10:4 10:10 10:11

A musical staff in treble clef showing five notes. The first note is a whole rest. The second note is A# (10:0). The third note is A# (10:2). The fourth note is A# (10:4). The fifth note is A# (10:10). The sixth note is A# (10:11).

Root = 10 (Bb)

10:0 10:2 10:4 10:10 10:11

A musical staff in treble clef showing five notes. The first note is a whole rest. The second note is Bb (10:0). The third note is Bb (10:2). The fourth note is Bb (10:4). The fifth note is Bb (10:10). The sixth note is Bb (10:11).

Root = 11 (B)

11:0 11:2 11:4 11:10 11:11

A musical staff in treble clef showing five notes. The first note is a whole rest. The second note is B (11:0). The third note is B (11:2). The fourth note is B (11:4). The fifth note is B (11:10). The sixth note is B (11:11).