

Chord Type 0 1 5 7 10 in All Keys

Treble Clef, 5 Notes, Diatonic Scale Degrees: 12457

Stanley Jordan

Root = 0 (C)

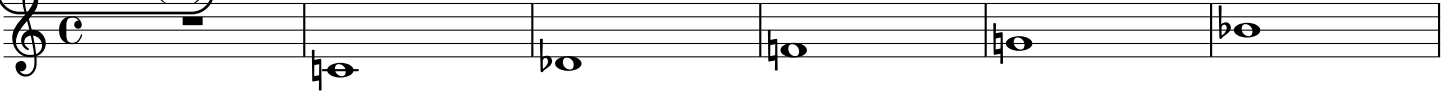
0:0

0:1

0:5

0:7

0:10



Root = 1 (C#)

1:0

1:1

1:5

1:7

1:10



Root = 1 (Db)

1:0

1:1

1:5

1:7

1:10



Root = 2 (D)

2:0

2:1

2:5

2:7

2:10



Root = 3 (D#)

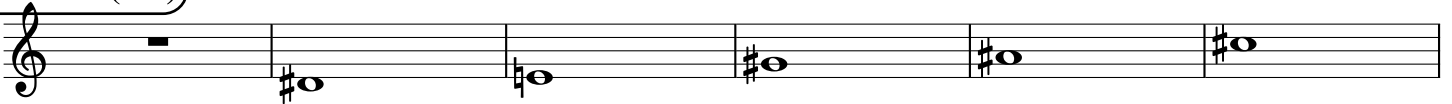
3:0

3:1

3:5

3:7

3:10



Root = 3 (Eb)

3:0

3:1

3:5

3:7

3:10



Root = 4 (E)

4:0

4:1

4:5

4:7

4:10



Root = 5 (F)

5:0

5:1

5:5

5:7

5:10



Root = 6 (F#)

6:0

6:1

6:5

6:7

6:10



Root = 6 (Gb)

6:0 6:1 6:5 6:7 6:10

A musical staff in treble clef showing five notes. The first note is a whole rest. The second note is Gb (flat), the third is Gb (flat), the fourth is Gb (flat), and the fifth is Gb (flat).

Root = 7 (G)

7:0 7:1 7:5 7:7 7:10

A musical staff in treble clef showing five notes. The first note is a whole rest. The second note is G (natural), the third is G (flat), the fourth is G (natural), and the fifth is G (natural).

Root = 8 (G#)

8:0 8:1 8:5 8:7 8:10

A musical staff in treble clef showing five notes. The first note is a whole rest. The second note is G# (sharp), the third is G (flat), the fourth is G# (sharp), and the fifth is G# (sharp).

Root = 8 (Ab)

8:0 8:1 8:5 8:7 8:10

A musical staff in treble clef showing five notes. The first note is a whole rest. The second note is Ab (flat), the third is Ab (flat), the fourth is Ab (flat), and the fifth is Ab (flat).

Root = 9 (A)

9:0 9:1 9:5 9:7 9:10

A musical staff in treble clef showing five notes. The first note is a whole rest. The second note is A (natural), the third is Ab (flat), the fourth is A (natural), and the fifth is A (natural).

Root = 10 (A#)

10:0 10:1 10:5 10:7 10:10

A musical staff in treble clef showing five notes. The first note is a whole rest. The second note is A# (sharp), the third is Ab (flat), the fourth is A# (sharp), and the fifth is A# (sharp).

Root = 10 (Bb)

10:0 10:1 10:5 10:7 10:10

A musical staff in treble clef showing five notes. The first note is a whole rest. The second note is Bb (flat), the third is Bb (flat), the fourth is Bb (flat), and the fifth is Bb (flat).

Root = 11 (B)

11:0 11:1 11:5 11:7 11:10

A musical staff in treble clef showing five notes. The first note is a whole rest. The second note is B (natural), the third is B (natural), the fourth is B# (sharp), and the fifth is B (natural).