

# Chord Type 0 1 4 9 11 in All Keys

Treble Clef, 5 Notes, Diatonic Scale Degrees: 12367

Stanley Jordan

Root = 0 (C)

0:0

0:1

0:4

0:9

0:11



Root = 1 (C#)

1:0

1:1

1:4

1:9

1:11



Root = 1 (Db)

1:0

1:1

1:4

1:9

1:11



Root = 2 (D)

2:0

2:1

2:4

2:9

2:11



Root = 3 (D#)

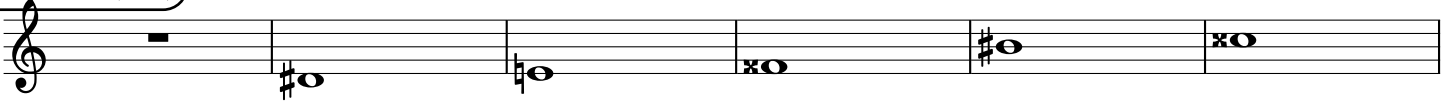
3:0

3:1

3:4

3:9

3:11



Root = 3 (Eb)

3:0

3:1

3:4

3:9

3:11



Root = 4 (E)

4:0

4:1

4:4

4:9

4:11



Root = 5 (F)

5:0

5:1

5:4

5:9

5:11



Root = 6 (F#)

6:0

6:1

6:4

6:9

6:11



**Root = 6 (Gb)**

6:0                      6:1                      6:4                      6:9                      6:11

A musical staff in treble clef with a flat key signature. The first measure contains a whole rest. The second measure has a whole note Gb. The third measure has a whole note Ab. The fourth measure has a whole note Bb. The fifth measure has a whole note Cb. The sixth measure has a whole note Db.

**Root = 7 (G)**

7:0                      7:1                      7:4                      7:9                      7:11

A musical staff in treble clef with a natural key signature. The first measure contains a whole rest. The second measure has a whole note G. The third measure has a whole note Ab. The fourth measure has a whole note Bb. The fifth measure has a whole note C. The sixth measure has a whole note D.

**Root = 8 (G#)**

8:0                      8:1                      8:4                      8:9                      8:11

A musical staff in treble clef with a sharp key signature. The first measure contains a whole rest. The second measure has a whole note G#. The third measure has a whole note Ab. The fourth measure has a whole note Bb. The fifth measure has a whole note C#. The sixth measure has a whole note D#.

**Root = 8 (Ab)**

8:0                      8:1                      8:4                      8:9                      8:11

A musical staff in treble clef with a flat key signature. The first measure contains a whole rest. The second measure has a whole note Ab. The third measure has a whole note Bb. The fourth measure has a whole note C. The fifth measure has a whole note D. The sixth measure has a whole note E.

**Root = 9 (A)**

9:0                      9:1                      9:4                      9:9                      9:11

A musical staff in treble clef with a natural key signature. The first measure contains a whole rest. The second measure has a whole note A. The third measure has a whole note Bb. The fourth measure has a whole note C#. The fifth measure has a whole note D#. The sixth measure has a whole note E.

**Root = 10 (A#)**

10:0                      10:1                      10:4                      10:9                      10:11

A musical staff in treble clef with a sharp key signature. The first measure contains a whole rest. The second measure has a whole note A#. The third measure has a whole note Bb. The fourth measure has a whole note C# with an 'x' over it. The fifth measure has a whole note D# with an 'x' over it. The sixth measure has a whole note E with an 'x' over it.

**Root = 10 (Bb)**

10:0                      10:1                      10:4                      10:9                      10:11

A musical staff in treble clef with a flat key signature. The first measure contains a whole rest. The second measure has a whole note Bb. The third measure has a whole note C. The fourth measure has a whole note D. The fifth measure has a whole note E. The sixth measure has a whole note F.

**Root = 11 (B)**

11:0                      11:1                      11:4                      11:9                      11:11

A musical staff in treble clef with a natural key signature. The first measure contains a whole rest. The second measure has a whole note B. The third measure has a whole note C. The fourth measure has a whole note D#. The fifth measure has a whole note E#. The sixth measure has a whole note F#.