

# Chord Type 0 1 4 9 10 in All Keys

Treble Clef, 5 Notes, Diatonic Scale Degrees: 12367

Stanley Jordan

Root = 0 (C)

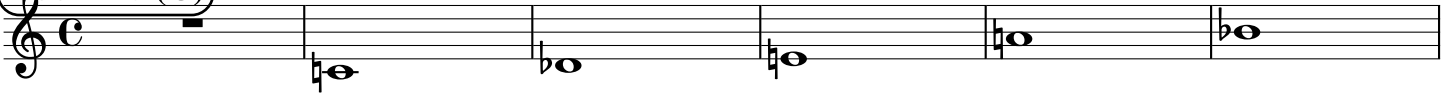
0:0

0:1

0:4

0:9

0:10



Root = 1 (C#)

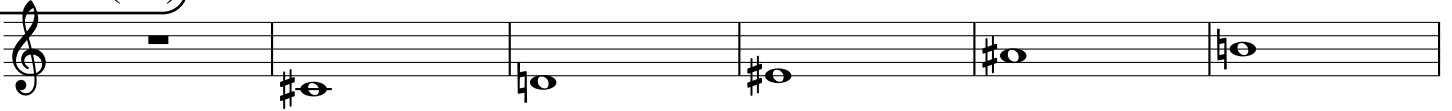
1:0

1:1

1:4

1:9

1:10



Root = 1 (Db)

1:0

1:1

1:4

1:9

1:10



Root = 2 (D)

2:0

2:1

2:4

2:9

2:10



Root = 3 (D#)

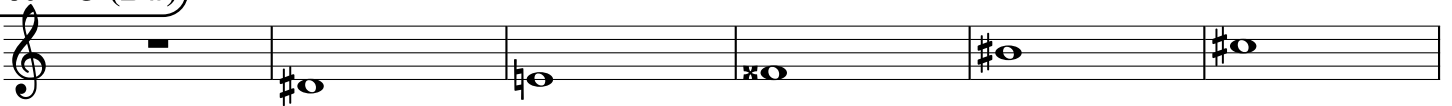
3:0

3:1

3:4

3:9

3:10



Root = 3 (Eb)

3:0

3:1

3:4

3:9

3:10



Root = 4 (E)

4:0

4:1

4:4

4:9

4:10



Root = 5 (F)

5:0

5:1

5:4

5:9

5:10



Root = 6 (F#)

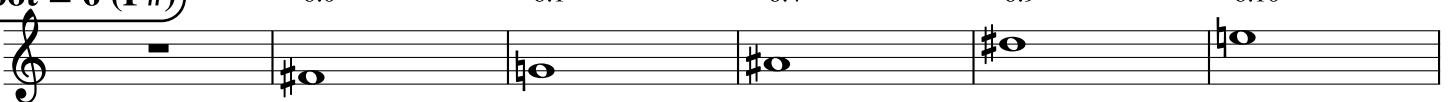
6:0

6:1

6:4

6:9

6:10



**Root = 6 (Gb)**

6:0                      6:1                      6:4                      6:9                      6:10

A musical staff in treble clef showing five notes. The first measure has a whole rest. The second measure has a G-flat note (F-sharp) with a flat sign. The third measure has a G-flat note with a flat sign. The fourth measure has a G-flat note with a flat sign. The fifth measure has a G-flat note with a flat sign. The sixth measure has a G-flat note with a flat sign.

**Root = 7 (G)**

7:0                      7:1                      7:4                      7:9                      7:10

A musical staff in treble clef showing five notes. The first measure has a whole rest. The second measure has a G note with a flat sign. The third measure has a G note with a flat sign. The fourth measure has a G note with a flat sign. The fifth measure has a G note with a flat sign. The sixth measure has a G note with a flat sign.

**Root = 8 (G#)**

8:0                      8:1                      8:4                      8:9                      8:10

A musical staff in treble clef showing five notes. The first measure has a whole rest. The second measure has a G-sharp note with a sharp sign. The third measure has a G-sharp note with a sharp sign. The fourth measure has a G-sharp note with a sharp sign. The fifth measure has a G-sharp note with a sharp sign. The sixth measure has a G-sharp note with a sharp sign.

**Root = 8 (Ab)**

8:0                      8:1                      8:4                      8:9                      8:10

A musical staff in treble clef showing five notes. The first measure has a whole rest. The second measure has an A-flat note with a flat sign. The third measure has an A-flat note with a flat sign. The fourth measure has an A-flat note with a flat sign. The fifth measure has an A-flat note with a flat sign. The sixth measure has an A-flat note with a flat sign.

**Root = 9 (A)**

9:0                      9:1                      9:4                      9:9                      9:10

A musical staff in treble clef showing five notes. The first measure has a whole rest. The second measure has an A note with a sharp sign. The third measure has an A note with a sharp sign. The fourth measure has an A note with a sharp sign. The fifth measure has an A note with a sharp sign. The sixth measure has an A note with a sharp sign.

**Root = 10 (A#)**

10:0                      10:1                      10:4                      10:9                      10:10

A musical staff in treble clef showing five notes. The first measure has a whole rest. The second measure has an A-sharp note with a sharp sign. The third measure has an A-sharp note with a sharp sign. The fourth measure has an A-sharp note with a sharp sign. The fifth measure has an A-sharp note with a sharp sign. The sixth measure has an A-sharp note with a sharp sign.

**Root = 10 (Bb)**

10:0                      10:1                      10:4                      10:9                      10:10

A musical staff in treble clef showing five notes. The first measure has a whole rest. The second measure has a B-flat note with a flat sign. The third measure has a B-flat note with a flat sign. The fourth measure has a B-flat note with a flat sign. The fifth measure has a B-flat note with a flat sign. The sixth measure has a B-flat note with a flat sign.

**Root = 11 (B)**

11:0                      11:1                      11:4                      11:9                      11:10

A musical staff in treble clef showing five notes. The first measure has a whole rest. The second measure has a B note with a sharp sign. The third measure has a B note with a sharp sign. The fourth measure has a B note with a sharp sign. The fifth measure has a B note with a sharp sign. The sixth measure has a B note with a sharp sign.