

Chord Type 0 1 3 6 10 in All Keys

Treble Clef, 5 Notes, Diatonic Scale Degrees:12357

Stanley Jordan

Root = 0 (C)

0:0

0:1

0:3

0:6

0:10



Root = 1 (C#)

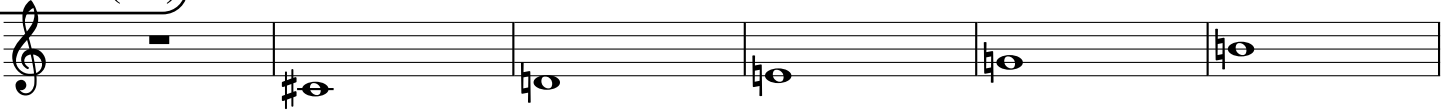
1:0

1:1

1:3

1:6

1:10



Root = 1 (Db)

1:0

1:1

1:3

1:6

1:10



Root = 2 (D)

2:0

2:1

2:3

2:6

2:10



Root = 3 (D#)

3:0

3:1

3:3

3:6

3:10



Root = 3 (Eb)

3:0

3:1

3:3

3:6

3:10



Root = 4 (E)

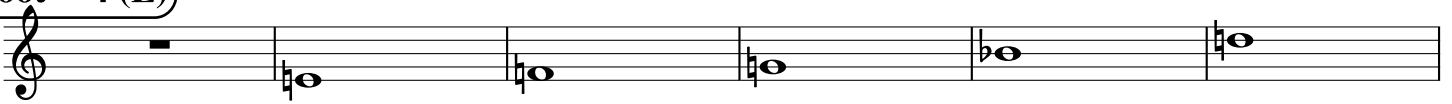
4:0

4:1

4:3

4:6

4:10



Root = 5 (F)

5:0

5:1

5:3

5:6

5:10



Root = 6 (F#)

6:0

6:1

6:3

6:6

6:10



Root = 6 (Gb)

6:0 6:1 6:3 6:6 6:10

A musical staff in treble clef showing five notes. The first note is a whole rest. The second note is Gb (flat), the third is Ab (flat), the fourth is Bb (flat), and the fifth is Cb (flat).

Root = 7 (G)

7:0 7:1 7:3 7:6 7:10

A musical staff in treble clef showing five notes. The first note is a whole rest. The second note is G (natural), the third is Ab (flat), the fourth is Bb (flat), and the fifth is C (natural).

Root = 8 (G#)

8:0 8:1 8:3 8:6 8:10

A musical staff in treble clef showing five notes. The first note is a whole rest. The second note is G# (sharp), the third is Ab (flat), the fourth is Bb (flat), and the fifth is C# (sharp).

Root = 8 (Ab)

8:0 8:1 8:3 8:6 8:10

A musical staff in treble clef showing five notes. The first note is a whole rest. The second note is Ab (flat), the third is Bb (flat), the fourth is C (natural), and the fifth is Cb (flat).

Root = 9 (A)

9:0 9:1 9:3 9:6 9:10

A musical staff in treble clef showing five notes. The first note is a whole rest. The second note is A (natural), the third is Ab (flat), the fourth is Bb (flat), and the fifth is C (natural).

Root = 10 (A#)

10:0 10:1 10:3 10:6 10:10

A musical staff in treble clef showing five notes. The first note is a whole rest. The second note is A# (sharp), the third is Bb (flat), the fourth is C (natural), and the fifth is C# (sharp).

Root = 10 (Bb)

10:0 10:1 10:3 10:6 10:10

A musical staff in treble clef showing five notes. The first note is a whole rest. The second note is Bb (flat), the third is C (natural), the fourth is Cb (flat), and the fifth is D (natural).

Root = 11 (B)

11:0 11:1 11:3 11:6 11:10

A musical staff in treble clef showing five notes. The first note is a whole rest. The second note is B (natural), the third is Bb (flat), the fourth is C (natural), and the fifth is C# (sharp).