

# Chord Type 0 1 3 6 9 in All Keys

Treble Clef, 5 Notes, Diatonic Scale Degrees:12356

Stanley Jordan

Root = 0 (C)

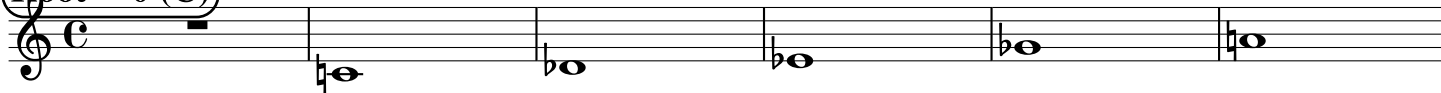
0:0

0:1

0:3

0:6

0:9



Root = 1 (C#)

1:0

1:1

1:3

1:6

1:9



Root = 1 (Db)

1:0

1:1

1:3

1:6

1:9



Root = 2 (D)

2:0

2:1

2:3

2:6

2:9



Root = 3 (D#)

3:0

3:1

3:3

3:6

3:9



Root = 3 (Eb)

3:0

3:1

3:3

3:6

3:9



Root = 4 (E)

4:0

4:1

4:3

4:6

4:9



Root = 5 (F)

5:0

5:1

5:3

5:6

5:9



Root = 6 (F#)

6:0

6:1

6:3

6:6

6:9



**Root = 6 (Gb)**

6:0                  6:1                  6:3                  6:6                  6:9

A musical staff in treble clef showing five notes. The first note is a whole rest. The second note is Gb (flat), the third is Gb (flat), the fourth is Gb (flat), the fifth is Gb (flat), and the sixth is Gb (flat).

**Root = 7 (G)**

7:0                  7:1                  7:3                  7:6                  7:9

A musical staff in treble clef showing five notes. The first note is a whole rest. The second note is G (natural), the third is G (flat), the fourth is G (flat), and the fifth is G (flat).

**Root = 8 (G#)**

8:0                  8:1                  8:3                  8:6                  8:9

A musical staff in treble clef showing five notes. The first note is a whole rest. The second note is G# (sharp), the third is G (flat), the fourth is G (flat), and the fifth is G# (sharp).

**Root = 8 (Ab)**

8:0                  8:1                  8:3                  8:6                  8:9

A musical staff in treble clef showing five notes. The first note is a whole rest. The second note is Ab (flat), the third is Ab (flat), the fourth is Ab (flat), and the fifth is Ab (flat).

**Root = 9 (A)**

9:0                  9:1                  9:3                  9:6                  9:9

A musical staff in treble clef showing five notes. The first note is a whole rest. The second note is A (flat), the third is A (flat), the fourth is A (flat), and the fifth is A# (sharp).

**Root = 10 (A#)**

10:0                  10:1                  10:3                  10:6                  10:9

A musical staff in treble clef showing five notes. The first note is a whole rest. The second note is A# (sharp), the third is Ab (flat), the fourth is A# (sharp), and the fifth is A# (sharp).

**Root = 10 (Bb)**

10:0                  10:1                  10:3                  10:6                  10:9

A musical staff in treble clef showing five notes. The first note is a whole rest. The second note is Bb (flat), the third is Bb (flat), the fourth is Bb (flat), and the fifth is Bb (flat).

**Root = 11 (B)**

11:0                  11:1                  11:3                  11:6                  11:9

A musical staff in treble clef showing five notes. The first note is a whole rest. The second note is B (flat), the third is B (flat), the fourth is B (flat), and the fifth is B# (sharp).