

Chord Type 0 1 2 4 10 in All Keys

Treble Clef, 5 Notes, Diamorphic Scale Degrees:12237

Stanley Jordan

Root = 0 (C)

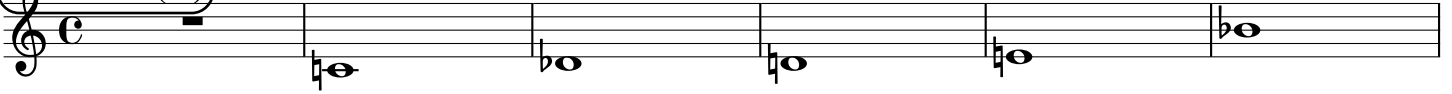
0:0

0:1

0:2

0:4

0:10



Root = 1 (C#)

1:0

1:1

1:2

1:4

1:10



Root = 1 (Db)

1:0

1:1

1:2

1:4

1:10



Root = 2 (D)

2:0

2:1

2:2

2:4

2:10



Root = 3 (D#)

3:0

3:1

3:2

3:4

3:10



Root = 3 (Eb)

3:0

3:1

3:2

3:4

3:10



Root = 4 (E)

4:0

4:1

4:2

4:4

4:10



Root = 5 (F)

5:0

5:1

5:2

5:4

5:10



Root = 6 (F#)

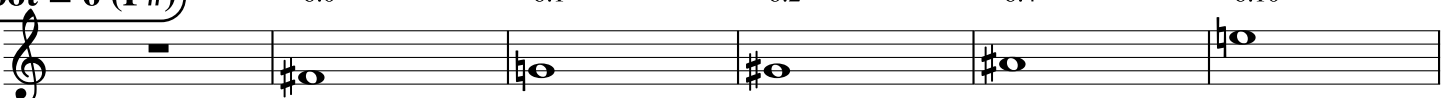
6:0

6:1

6:2

6:4

6:10



Root = 6 (Gb)

6:0 6:1 6:2 6:4 6:10

A musical staff in treble clef with a flat key signature. The first measure contains a whole rest. The second measure has a whole note Gb (F#4). The third measure has a whole note Gb (F#4) with a flat sign above it. The fourth measure has a whole note Gb (F#4) with a flat sign above it. The fifth measure has a whole note Gb (F#4) with a flat sign above it. The sixth measure has a whole note Gb (F#4) with a flat sign above it.

Root = 7 (G)

7:0 7:1 7:2 7:4 7:10

A musical staff in treble clef with a natural key signature. The first measure contains a whole rest. The second measure has a whole note G (G4). The third measure has a whole note G (G4) with a flat sign above it. The fourth measure has a whole note G (G4) with a flat sign above it. The fifth measure has a whole note G (G4) with a flat sign above it. The sixth measure has a whole note G (G4) with a flat sign above it.

Root = 8 (G#)

8:0 8:1 8:2 8:4 8:10

A musical staff in treble clef with a sharp key signature. The first measure contains a whole rest. The second measure has a whole note G# (G#4). The third measure has a whole note G# (G#4) with a flat sign above it. The fourth measure has a whole note G# (G#4) with a flat sign above it. The fifth measure has a whole note G# (G#4) with a flat sign above it. The sixth measure has a whole note G# (G#4) with a flat sign above it.

Root = 8 (Ab)

8:0 8:1 8:2 8:4 8:10

A musical staff in treble clef with a flat key signature. The first measure contains a whole rest. The second measure has a whole note Ab (F#4). The third measure has a whole note Ab (F#4) with a flat sign above it. The fourth measure has a whole note Ab (F#4) with a flat sign above it. The fifth measure has a whole note Ab (F#4) with a flat sign above it. The sixth measure has a whole note Ab (F#4) with a flat sign above it.

Root = 9 (A)

9:0 9:1 9:2 9:4 9:10

A musical staff in treble clef with a natural key signature. The first measure contains a whole rest. The second measure has a whole note A (A4). The third measure has a whole note A (A4) with a flat sign above it. The fourth measure has a whole note A (A4) with a flat sign above it. The fifth measure has a whole note A (A4) with a sharp sign above it. The sixth measure has a whole note A (A4) with a flat sign above it.

Root = 10 (A#)

10:0 10:1 10:2 10:4 10:10

A musical staff in treble clef with a sharp key signature. The first measure contains a whole rest. The second measure has a whole note A# (A#4). The third measure has a whole note A# (A#4) with a flat sign above it. The fourth measure has a whole note A# (A#4) with a flat sign above it. The fifth measure has a whole note A# (A#4) with a flat sign above it. The sixth measure has a whole note A# (A#4) with a flat sign above it.

Root = 10 (Bb)

10:0 10:1 10:2 10:4 10:10

A musical staff in treble clef with a flat key signature. The first measure contains a whole rest. The second measure has a whole note Bb (Bb4). The third measure has a whole note Bb (Bb4) with a flat sign above it. The fourth measure has a whole note Bb (Bb4) with a flat sign above it. The fifth measure has a whole note Bb (Bb4) with a flat sign above it. The sixth measure has a whole note Bb (Bb4) with a flat sign above it.

Root = 11 (B)

11:0 11:1 11:2 11:4 11:10

A musical staff in treble clef with a natural key signature. The first measure contains a whole rest. The second measure has a whole note B (B4). The third measure has a whole note B (B4) with a flat sign above it. The fourth measure has a whole note B (B4) with a sharp sign above it. The fifth measure has a whole note B (B4) with a sharp sign above it. The sixth measure has a whole note B (B4) with a flat sign above it.