

# Chord Type 0 5 10 11 in All Keys

Treble Clef, 4 Notes, Diamorphic Scale Degrees:1467

Stanley Jordan

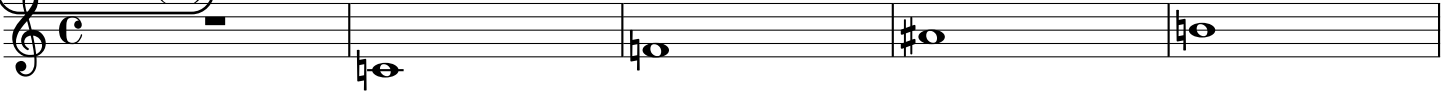
Root = 0 (C)

0:0

0:5

0:10

0:11



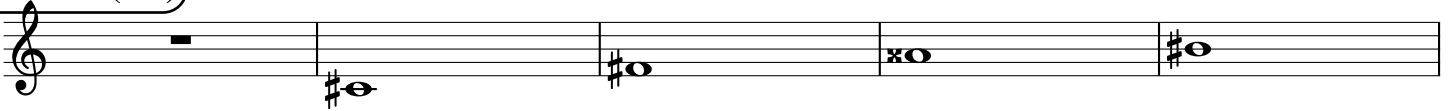
Root = 1 (C#)

1:0

1:5

1:10

1:11



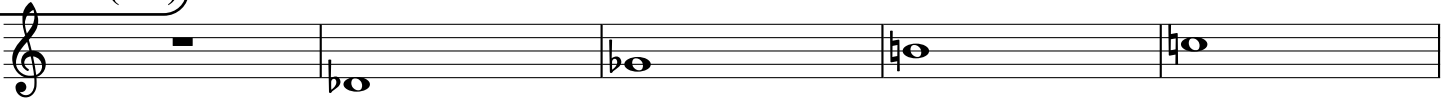
Root = 1 (Db)

1:0

1:5

1:10

1:11



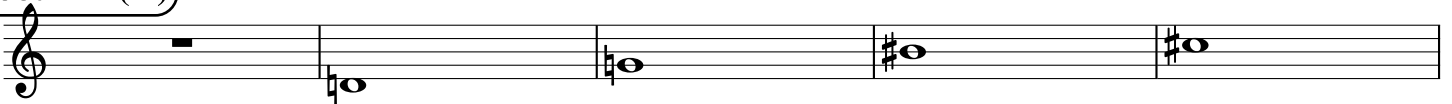
Root = 2 (D)

2:0

2:5

2:10

2:11



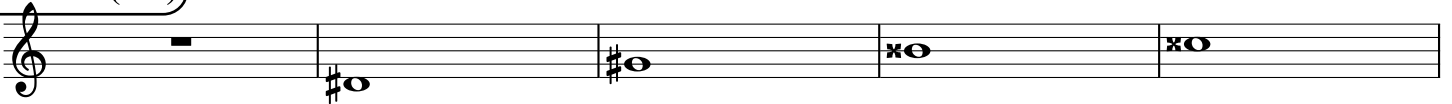
Root = 3 (D#)

3:0

3:5

3:10

3:11



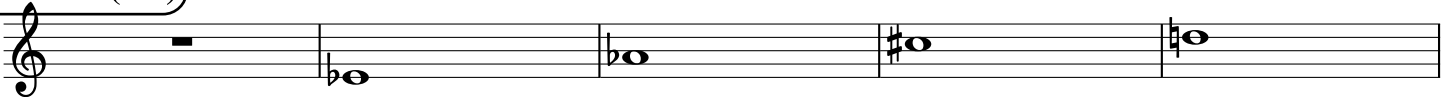
Root = 3 (Eb)

3:0

3:5

3:10

3:11



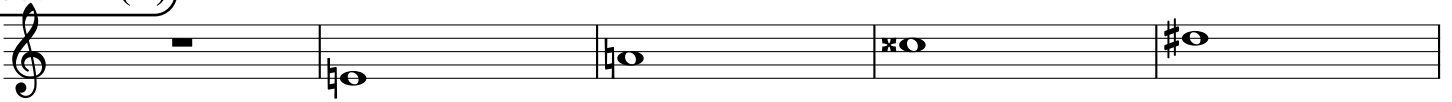
Root = 4 (E)

4:0

4:5

4:10

4:11



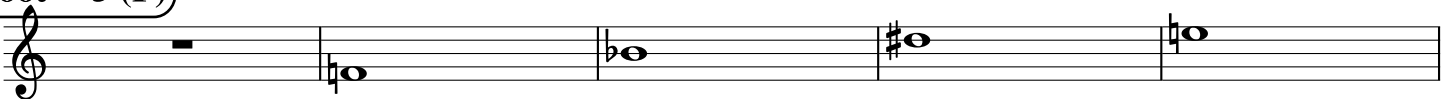
Root = 5 (F)

5:0

5:5

5:10

5:11



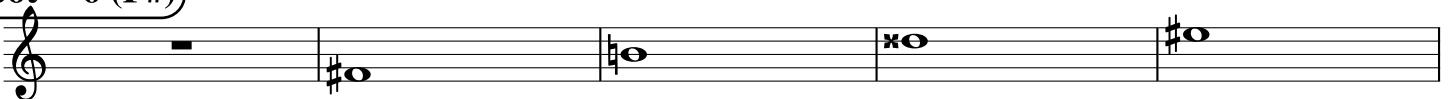
Root = 6 (F#)

6:0

6:5

6:10

6:11



**Root = 6 (Gb)**

6:0

6:5

6:10

6:11

A musical staff in treble clef showing four notes. The first note is a whole rest. The second note is Gb (6:5). The third note is Gb (6:10). The fourth note is Gb (6:11).

**Root = 7 (G)**

7:0

7:5

7:10

7:11

A musical staff in treble clef showing four notes. The first note is a whole rest. The second note is G (7:5). The third note is G (7:10). The fourth note is G (7:11).

**Root = 8 (G#)**

8:0

8:5

8:10

8:11

A musical staff in treble clef showing four notes. The first note is a whole rest. The second note is G# (8:5). The third note is G# (8:10). The fourth note is G# (8:11).

**Root = 8 (Ab)**

8:0

8:5

8:10

8:11

A musical staff in treble clef showing four notes. The first note is a whole rest. The second note is Ab (8:5). The third note is Ab (8:10). The fourth note is Ab (8:11).

**Root = 9 (A)**

9:0

9:5

9:10

9:11

A musical staff in treble clef showing four notes. The first note is a whole rest. The second note is A (9:5). The third note is A (9:10). The fourth note is A (9:11).

**Root = 10 (A#)**

10:0

10:5

10:10

10:11

A musical staff in treble clef showing four notes. The first note is a whole rest. The second note is A# (10:5). The third note is A# (10:10). The fourth note is A# (10:11).

**Root = 10 (Bb)**

10:0

10:5

10:10

10:11

A musical staff in treble clef showing four notes. The first note is a whole rest. The second note is Bb (10:5). The third note is Bb (10:10). The fourth note is Bb (10:11).

**Root = 11 (B)**

11:0

11:5

11:10

11:11

A musical staff in treble clef showing four notes. The first note is a whole rest. The second note is B (11:5). The third note is B (11:10). The fourth note is B (11:11).