

# Chord Type 0 5 7 9 in All Keys

Treble Clef, 4 Notes, Diatonic Scale Degrees: 1456

Stanley Jordan

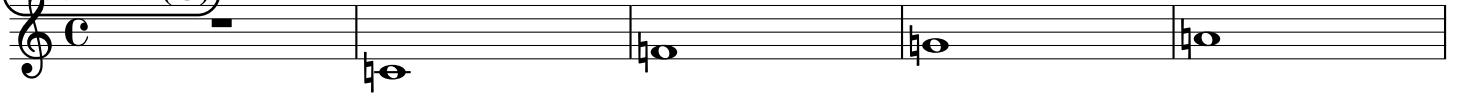
Root = 0 (C)

0:0

0:5

0:7

0:9



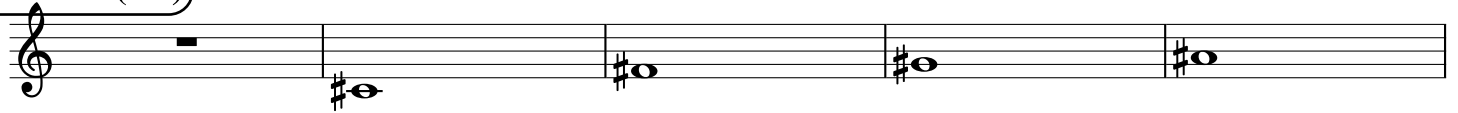
Root = 1 (C#)

1:0

1:5

1:7

1:9



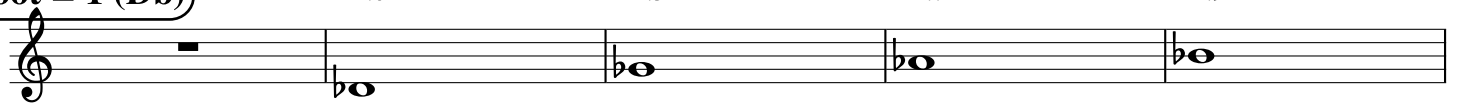
Root = 1 (Db)

1:0

1:5

1:7

1:9



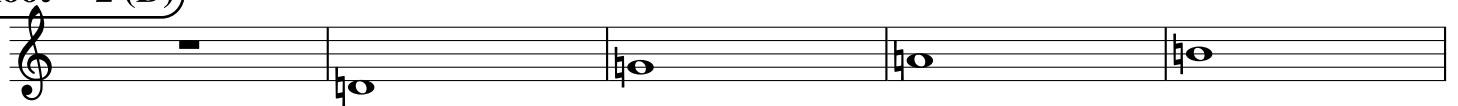
Root = 2 (D)

2:0

2:5

2:7

2:9



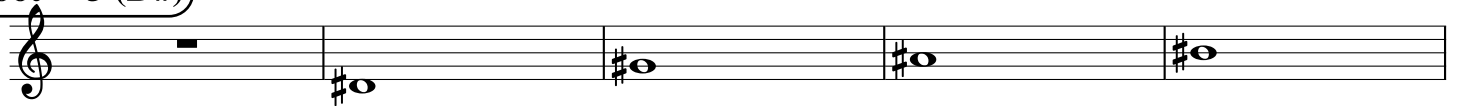
Root = 3 (D#)

3:0

3:5

3:7

3:9



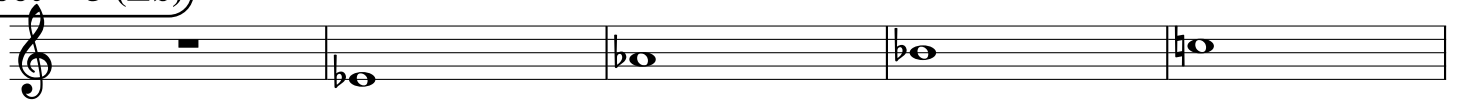
Root = 3 (Eb)

3:0

3:5

3:7

3:9



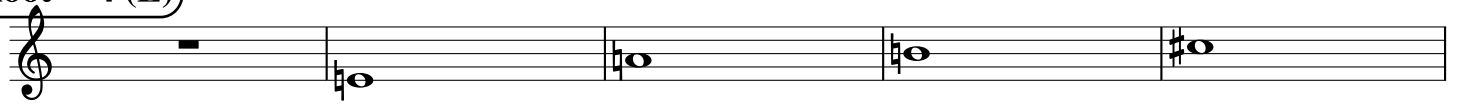
Root = 4 (E)

4:0

4:5

4:7

4:9



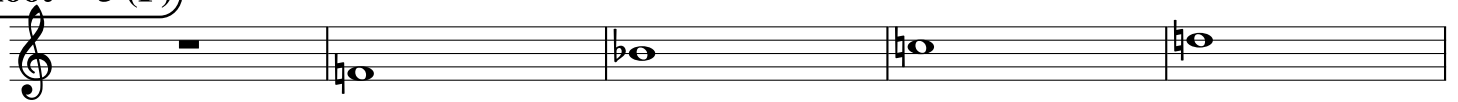
Root = 5 (F)

5:0

5:5

5:7

5:9



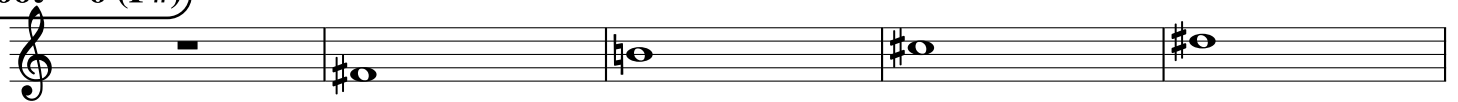
Root = 6 (F#)

6:0

6:5

6:7

6:9



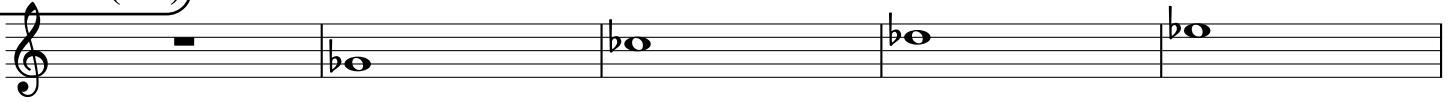
**Root = 6 (Gb)**

6:0

6:5

6:7

6:9



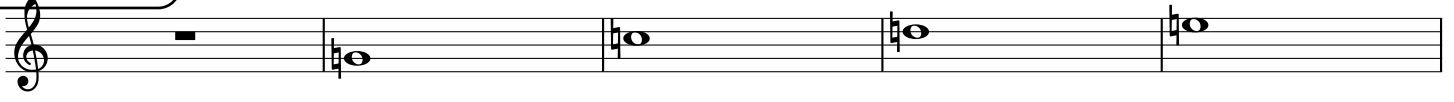
**Root = 7 (G)**

7:0

7:5

7:7

7:9



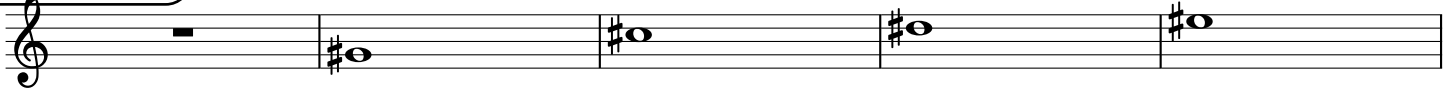
**Root = 8 (G#)**

8:0

8:5

8:7

8:9



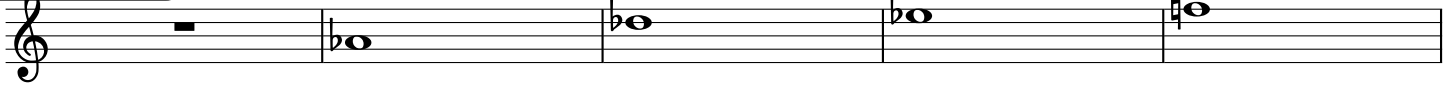
**Root = 8 (Ab)**

8:0

8:5

8:7

8:9



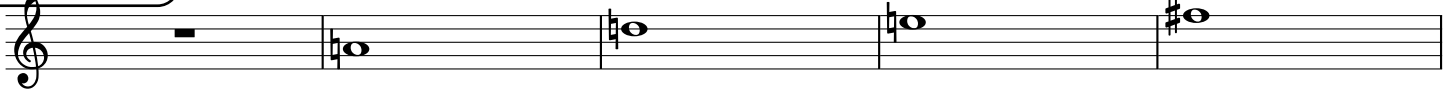
**Root = 9 (A)**

9:0

9:5

9:7

9:9



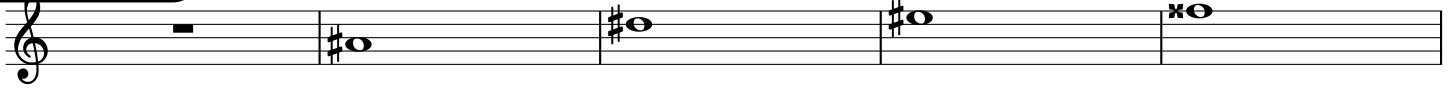
**Root = 10 (A#)**

10:0

10:5

10:7

10:9



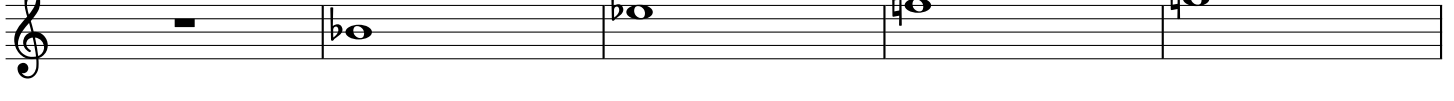
**Root = 10 (Bb)**

10:0

10:5

10:7

10:9



**Root = 11 (B)**

11:0

11:5

11:7

11:9

