

# Chord Type 0 5 6 7 in All Keys

Treble Clef, 4 Notes, Diatonic Scale Degrees: 1445

Stanley Jordan

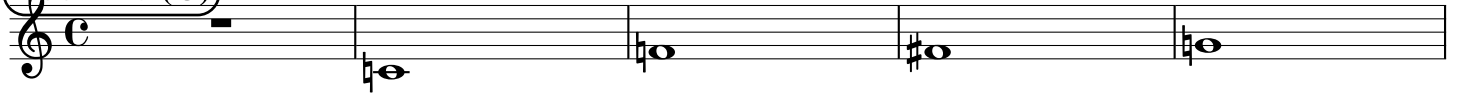
Root = 0 (C)

0:0

0:5

0:6

0:7



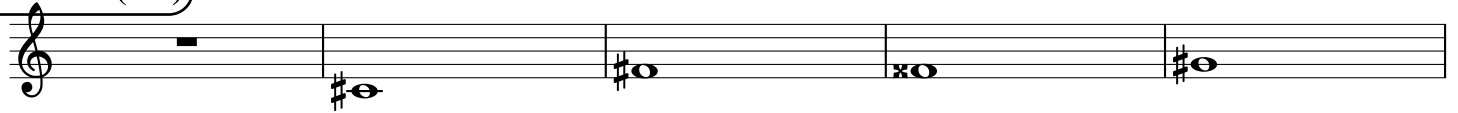
Root = 1 (C#)

1:0

1:5

1:6

1:7



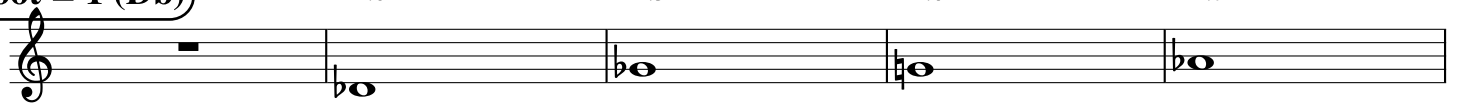
Root = 1 (Db)

1:0

1:5

1:6

1:7



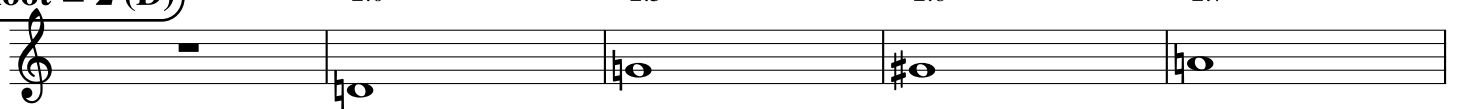
Root = 2 (D)

2:0

2:5

2:6

2:7



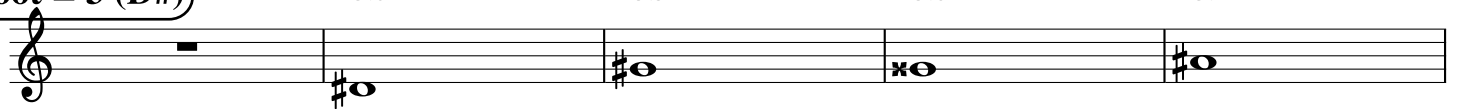
Root = 3 (D#)

3:0

3:5

3:6

3:7



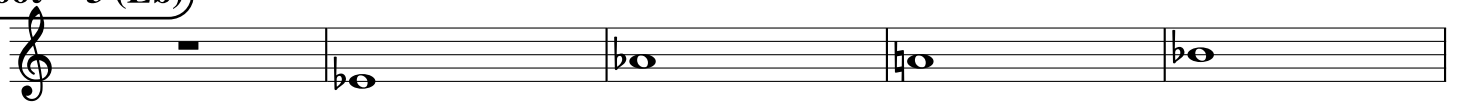
Root = 3 (Eb)

3:0

3:5

3:6

3:7



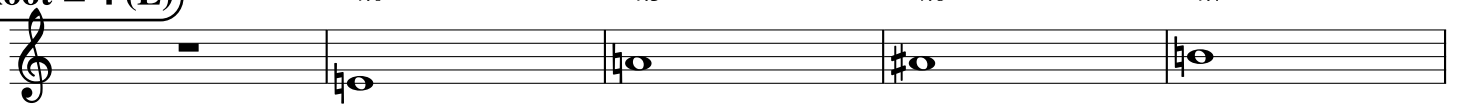
Root = 4 (E)

4:0

4:5

4:6

4:7



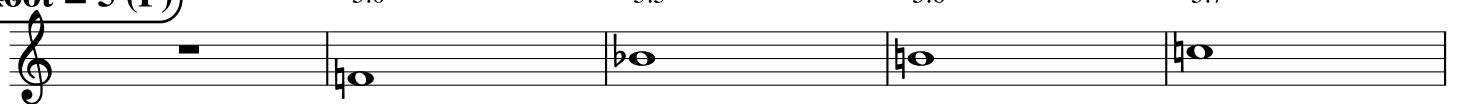
Root = 5 (F)

5:0

5:5

5:6

5:7



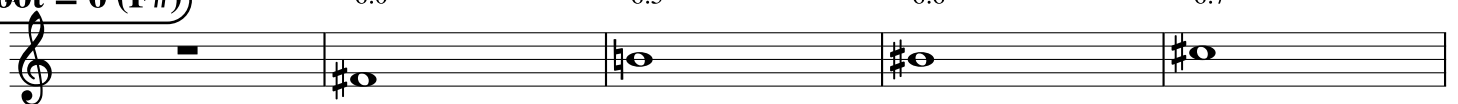
Root = 6 (F#)

6:0

6:5

6:6

6:7



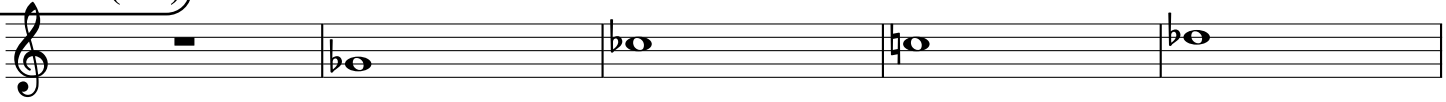
**Root = 6 (Gb)**

6:0

6:5

6:6

6:7



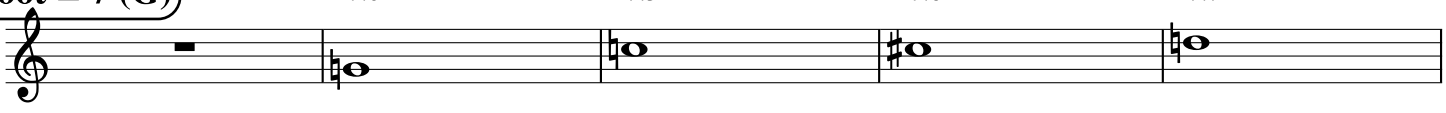
**Root = 7 (G)**

7:0

7:5

7:6

7:7



**Root = 8 (G#)**

8:0

8:5

8:6

8:7



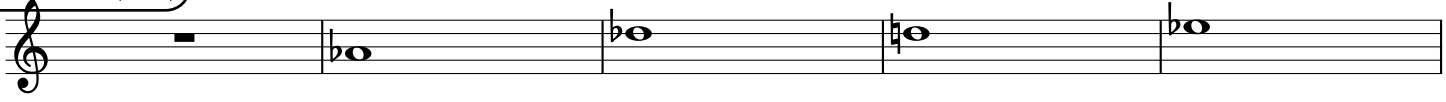
**Root = 8 (Ab)**

8:0

8:5

8:6

8:7



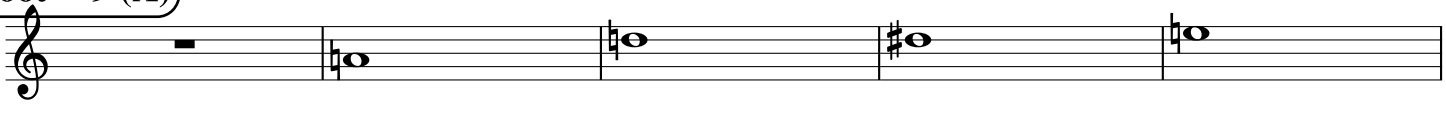
**Root = 9 (A)**

9:0

9:5

9:6

9:7



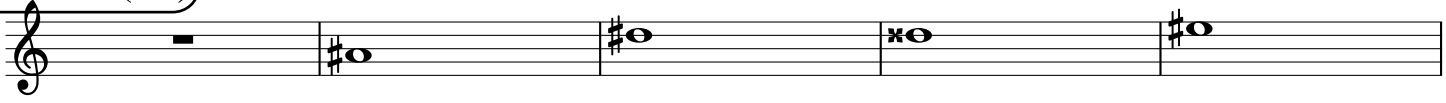
**Root = 10 (A#)**

10:0

10:5

10:6

10:7



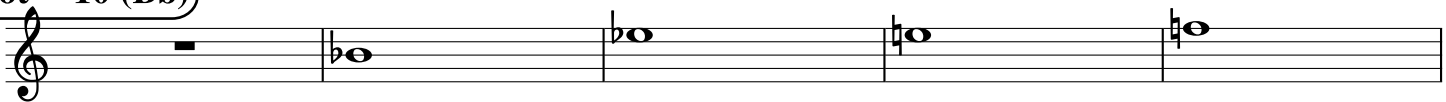
**Root = 10 (Bb)**

10:0

10:5

10:6

10:7



**Root = 11 (B)**

11:0

11:5

11:6

11:7

