

Chord Type 0 4 5 7 in All Keys

Treble Clef, 4 Notes, Diatonic Scale Degrees: 1345

Stanley Jordan

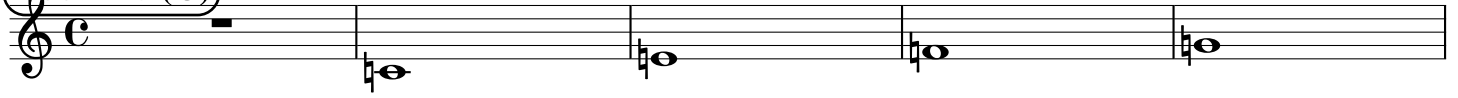
Root = 0 (C)

0:0

0:4

0:5

0:7



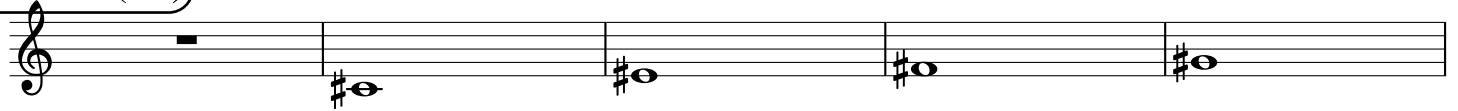
Root = 1 (C#)

1:0

1:4

1:5

1:7



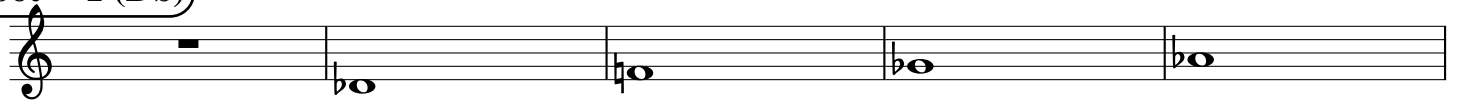
Root = 1 (Db)

1:0

1:4

1:5

1:7



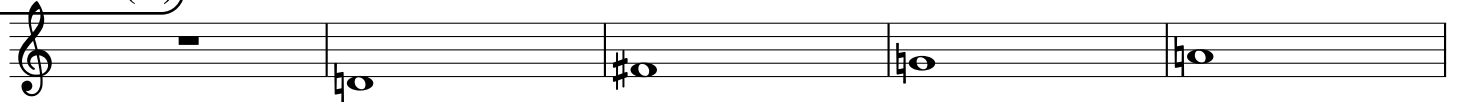
Root = 2 (D)

2:0

2:4

2:5

2:7



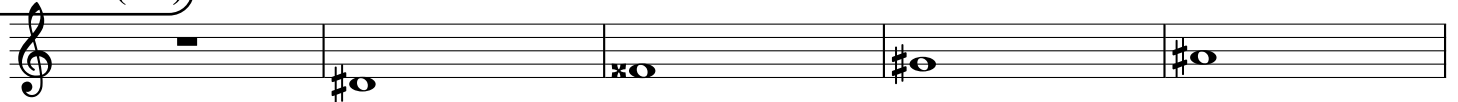
Root = 3 (D#)

3:0

3:4

3:5

3:7



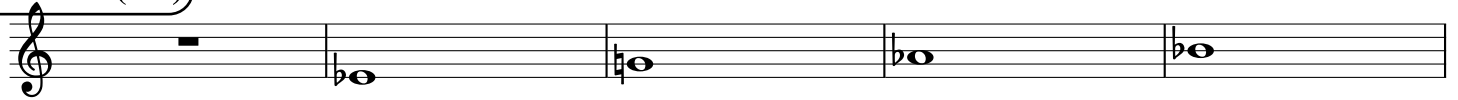
Root = 3 (Eb)

3:0

3:4

3:5

3:7



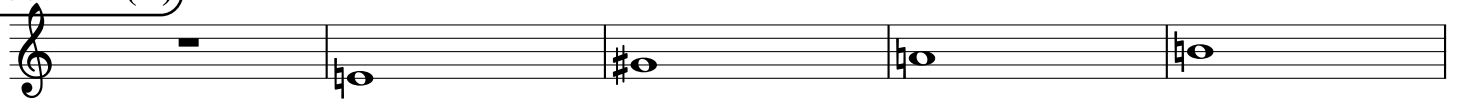
Root = 4 (E)

4:0

4:4

4:5

4:7



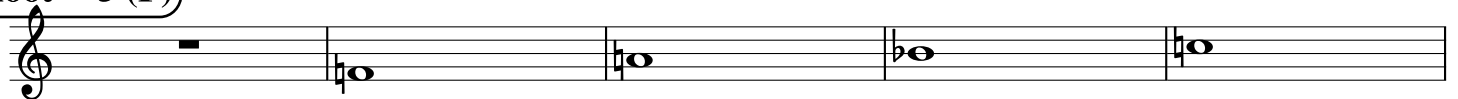
Root = 5 (F)

5:0

5:4

5:5

5:7



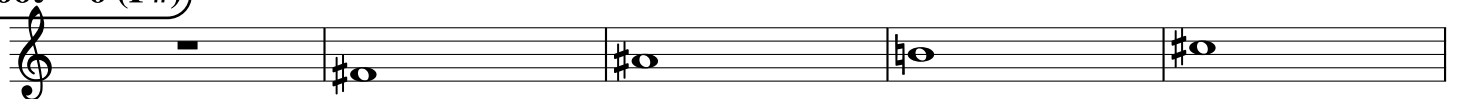
Root = 6 (F#)

6:0

6:4

6:5

6:7



Root = 6 (Gb)

6:0

6:4

6:5

6:7

A musical staff in treble clef showing four notes. The first note is a whole rest. The second note is Gb (flat), the third is Gb (flat), the fourth is Gb (flat), and the fifth is Gb (flat).

Root = 7 (G)

7:0

7:4

7:5

7:7

A musical staff in treble clef showing four notes. The first note is a whole rest. The second note is G (natural), the third is G (natural), the fourth is G (natural), and the fifth is G (natural).

Root = 8 (G#)

8:0

8:4

8:5

8:7

A musical staff in treble clef showing four notes. The first note is a whole rest. The second note is G# (sharp), the third is G# (sharp), the fourth is G# (sharp), and the fifth is G# (sharp).

Root = 8 (Ab)

8:0

8:4

8:5

8:7

A musical staff in treble clef showing four notes. The first note is a whole rest. The second note is Ab (flat), the third is Ab (flat), the fourth is Ab (flat), and the fifth is Ab (flat).

Root = 9 (A)

9:0

9:4

9:5

9:7

A musical staff in treble clef showing four notes. The first note is a whole rest. The second note is A (natural), the third is A (natural), the fourth is A (natural), and the fifth is A (natural).

Root = 10 (A#)

10:0

10:4

10:5

10:7

A musical staff in treble clef showing four notes. The first note is a whole rest. The second note is A# (sharp), the third is A# (sharp), the fourth is A# (sharp), and the fifth is A# (sharp).

Root = 10 (Bb)

10:0

10:4

10:5

10:7

A musical staff in treble clef showing four notes. The first note is a whole rest. The second note is Bb (flat), the third is Bb (flat), the fourth is Bb (flat), and the fifth is Bb (flat).

Root = 11 (B)

11:0

11:4

11:5

11:7

A musical staff in treble clef showing four notes. The first note is a whole rest. The second note is B (natural), the third is B (natural), the fourth is B (natural), and the fifth is B (natural).