

# Chord Type 0 4 5 6 in All Keys

Treble Clef, 4 Notes, Diamorphic Scale Degrees:1345

Stanley Jordan

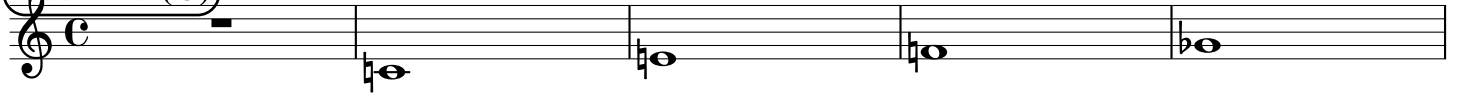
Root = 0 (C)

0:0

0:4

0:5

0:6



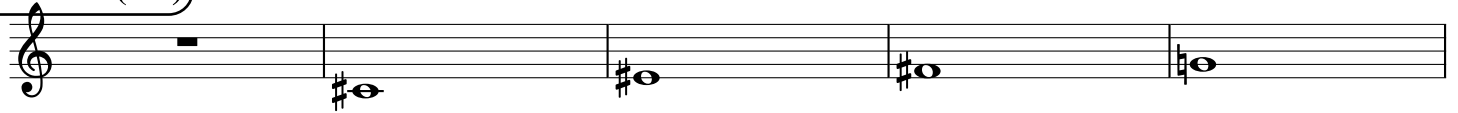
Root = 1 (C#)

1:0

1:4

1:5

1:6



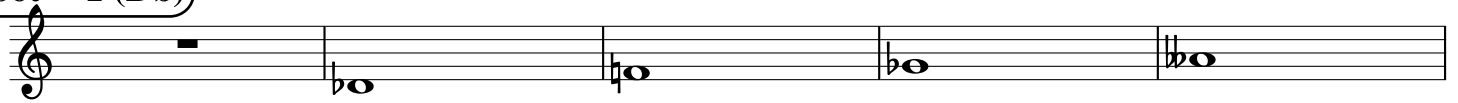
Root = 1 (Db)

1:0

1:4

1:5

1:6



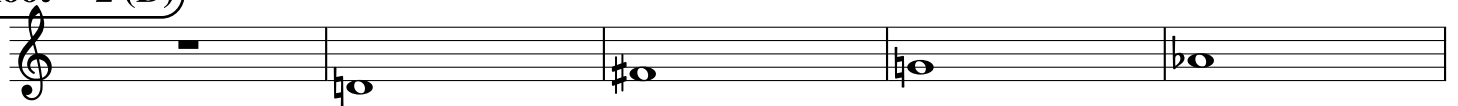
Root = 2 (D)

2:0

2:4

2:5

2:6



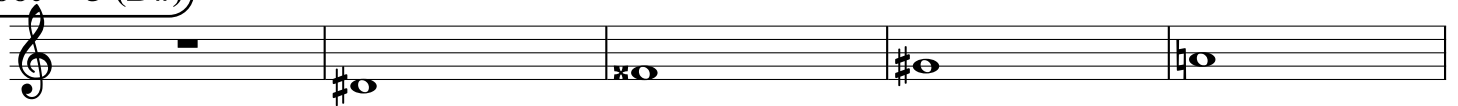
Root = 3 (D#)

3:0

3:4

3:5

3:6



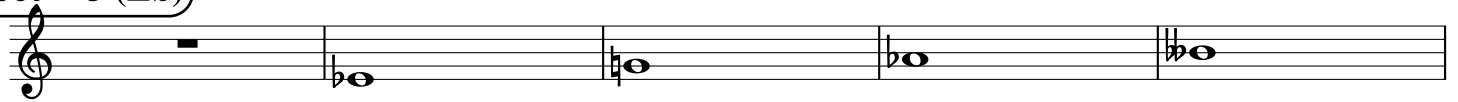
Root = 3 (Eb)

3:0

3:4

3:5

3:6



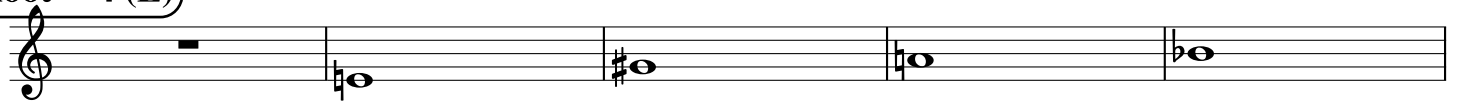
Root = 4 (E)

4:0

4:4

4:5

4:6



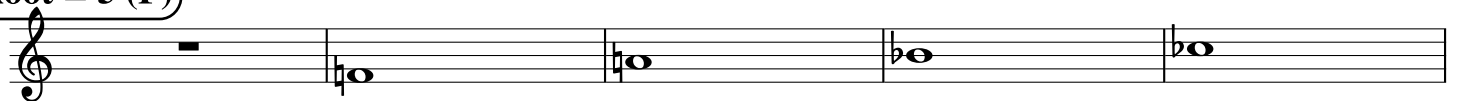
Root = 5 (F)

5:0

5:4

5:5

5:6



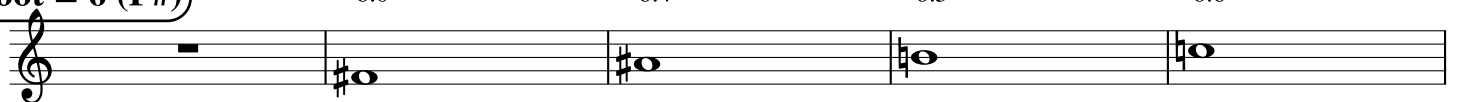
Root = 6 (F#)

6:0

6:4

6:5

6:6



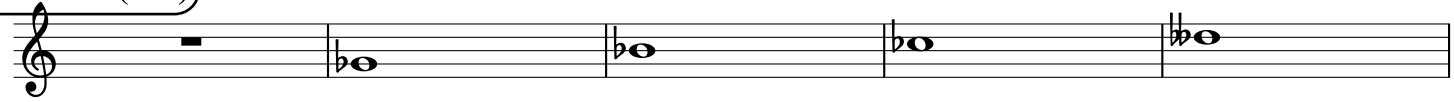
**Root = 6 (Gb)**

6:0

6:4

6:5

6:6



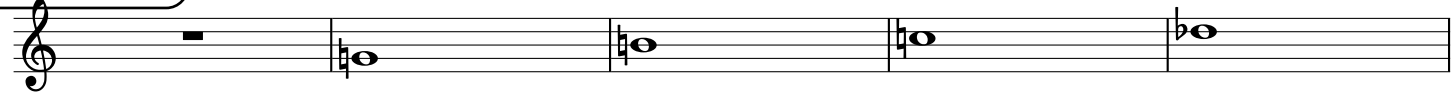
**Root = 7 (G)**

7:0

7:4

7:5

7:6



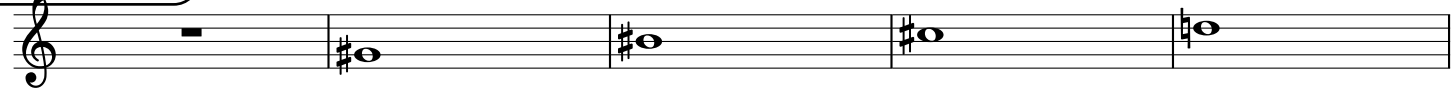
**Root = 8 (G#)**

8:0

8:4

8:5

8:6



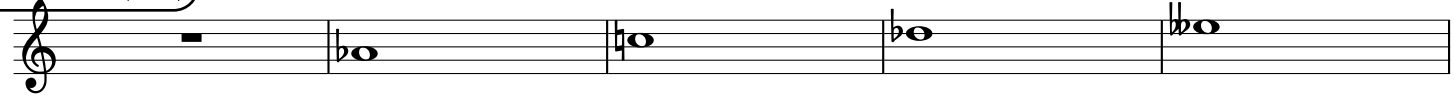
**Root = 8 (Ab)**

8:0

8:4

8:5

8:6



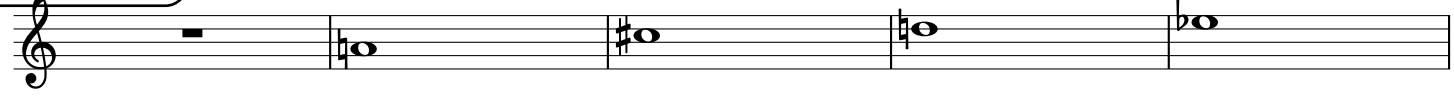
**Root = 9 (A)**

9:0

9:4

9:5

9:6



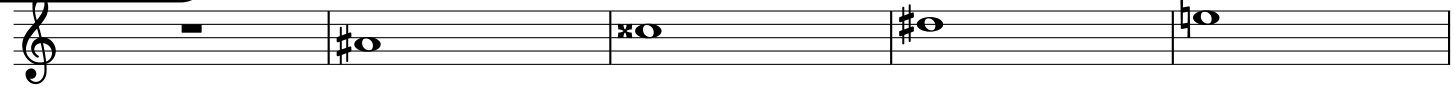
**Root = 10 (A#)**

10:0

10:4

10:5

10:6



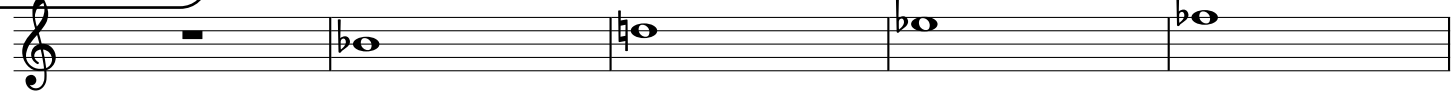
**Root = 10 (Bb)**

10:0

10:4

10:5

10:6



**Root = 11 (B)**

11:0

11:4

11:5

11:6

