

# Chord Type 0 3 10 11 in All Keys

Treble Clef, 4 Notes, Diamorphic Scale Degrees:1367

Stanley Jordan

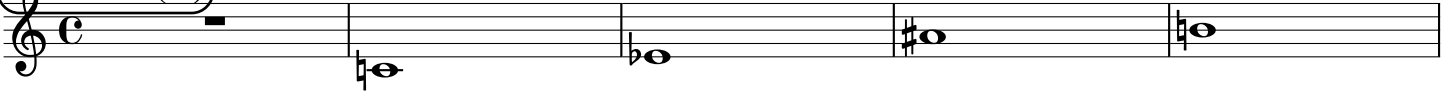
Root = 0 (C)

0:0

0:3

0:10

0:11



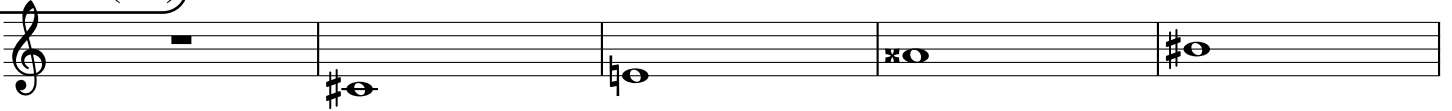
Root = 1 (C#)

1:0

1:3

1:10

1:11



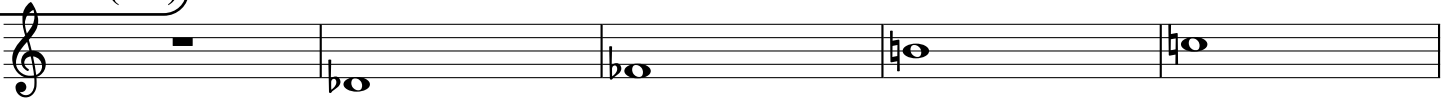
Root = 1 (Db)

1:0

1:3

1:10

1:11



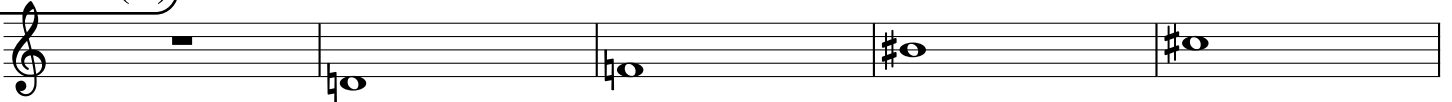
Root = 2 (D)

2:0

2:3

2:10

2:11



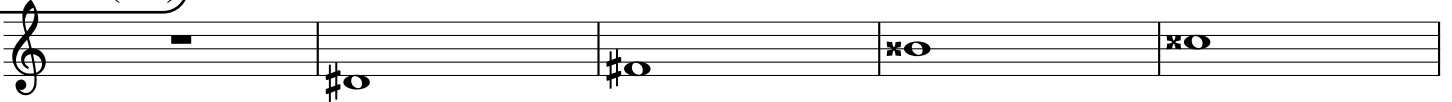
Root = 3 (D#)

3:0

3:3

3:10

3:11



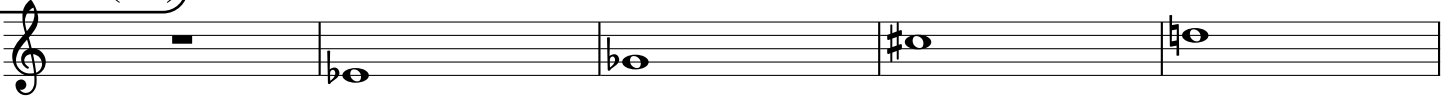
Root = 3 (Eb)

3:0

3:3

3:10

3:11



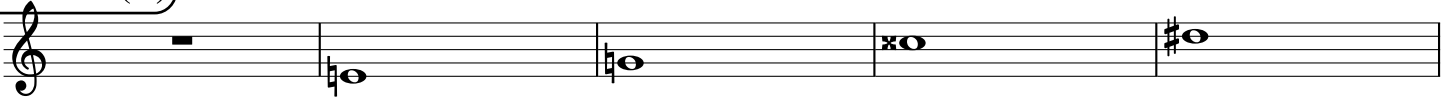
Root = 4 (E)

4:0

4:3

4:10

4:11



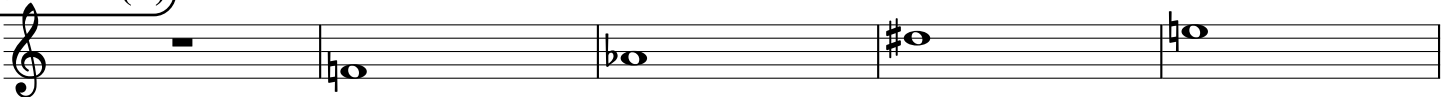
Root = 5 (F)

5:0

5:3

5:10

5:11



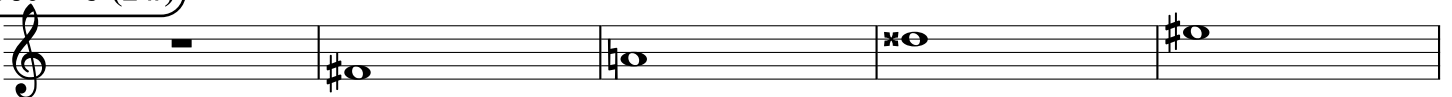
Root = 6 (F#)

6:0

6:3

6:10

6:11



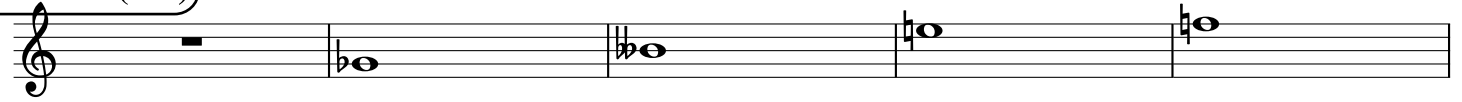
Root = 6 (Gb)

6:0

6:3

6:10

6:11



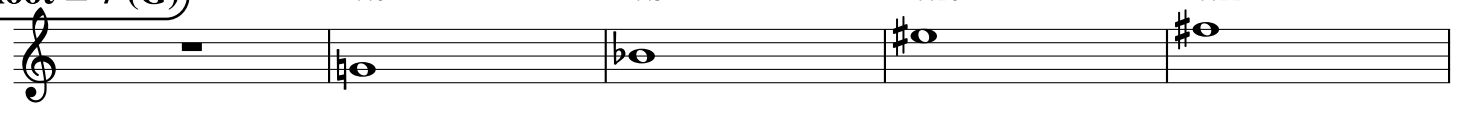
Root = 7 (G)

7:0

7:3

7:10

7:11



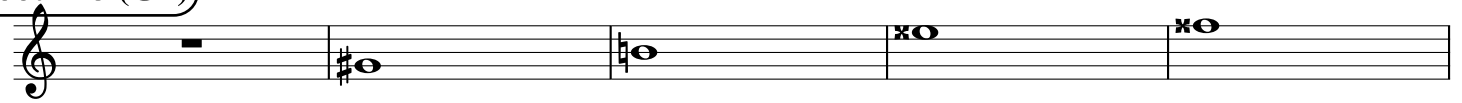
Root = 8 (G#)

8:0

8:3

8:10

8:11



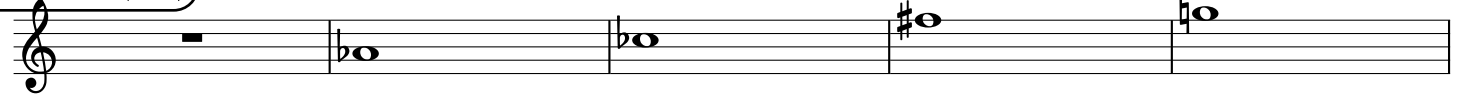
Root = 8 (Ab)

8:0

8:3

8:10

8:11



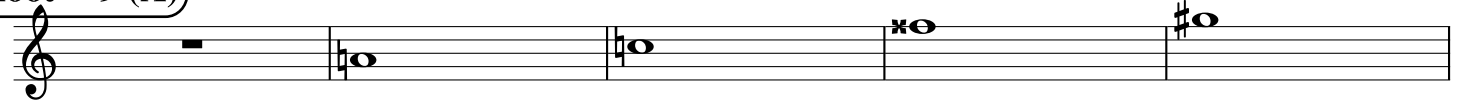
Root = 9 (A)

9:0

9:3

9:10

9:11



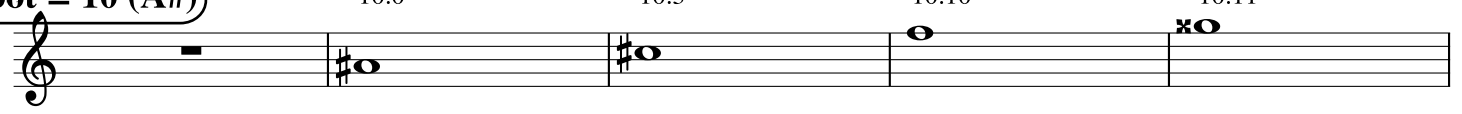
Root = 10 (A#)

10:0

10:3

10:10

10:11



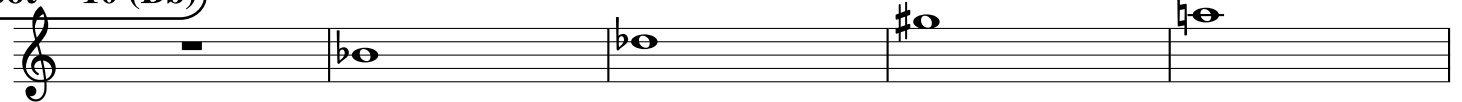
Root = 10 (Bb)

10:0

10:3

10:10

10:11



Root = 11 (B)

11:0

11:3

11:10

11:11

