

Chord Type 0 3 7 10 in All Keys

Treble Clef, 4 Notes, Diamorphic Scale Degrees:1357

Stanley Jordan

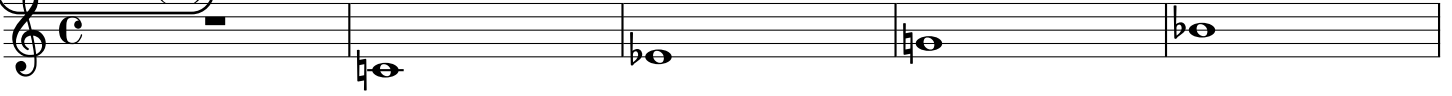
Root = 0 (C)

0:0

0:3

0:7

0:10



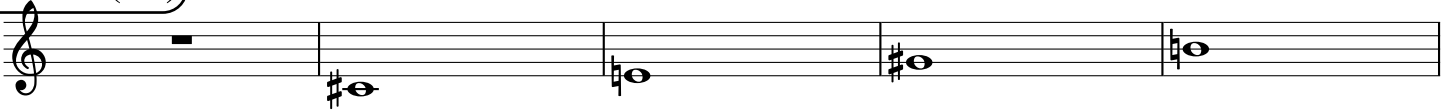
Root = 1 (C#)

1:0

1:3

1:7

1:10



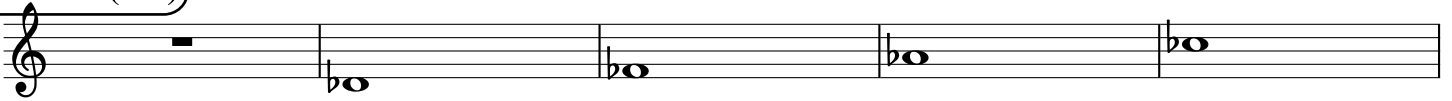
Root = 1 (Db)

1:0

1:3

1:7

1:10



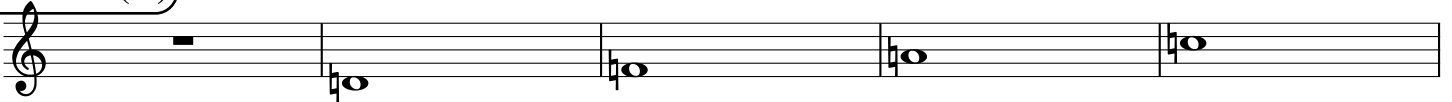
Root = 2 (D)

2:0

2:3

2:7

2:10



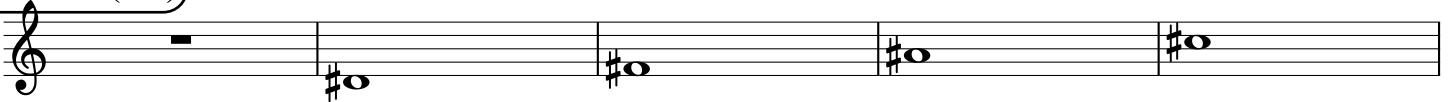
Root = 3 (D#)

3:0

3:3

3:7

3:10



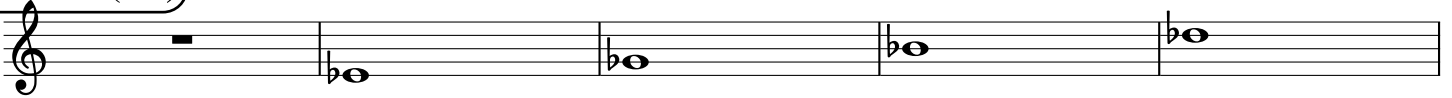
Root = 3 (Eb)

3:0

3:3

3:7

3:10



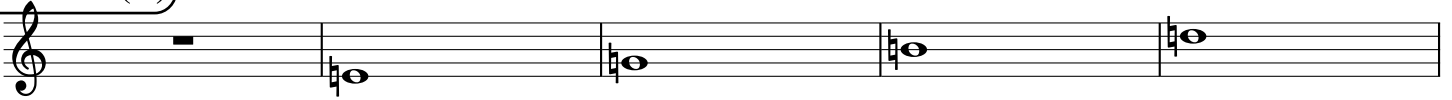
Root = 4 (E)

4:0

4:3

4:7

4:10



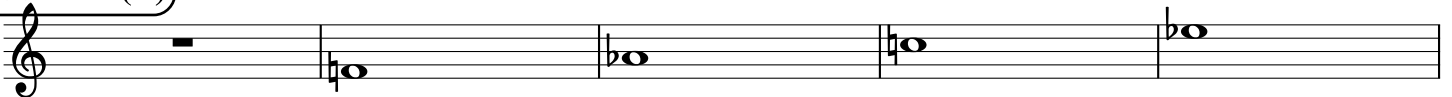
Root = 5 (F)

5:0

5:3

5:7

5:10



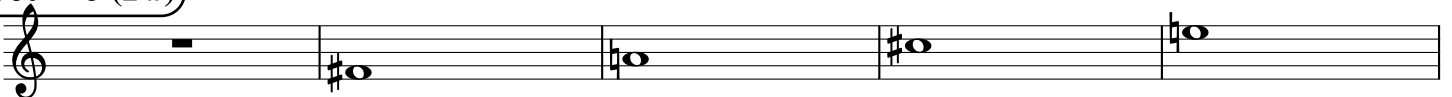
Root = 6 (F#)

6:0

6:3

6:7

6:10



Root = 6 (Gb)

6:0

6:3

6:7

6:10

A musical staff in treble clef showing four notes. The first note is a whole rest. The second note is Gb (flat), the third is Ab (flat), the fourth is Bb (flat). The notes are positioned on the staff lines: Gb is on the first space, Ab is on the second space, and Bb is on the third space.

Root = 7 (G)

7:0

7:3

7:7

7:10

A musical staff in treble clef showing four notes. The first note is a whole rest. The second note is G (natural), the third is Ab (flat), the fourth is Bb (flat). The notes are positioned on the staff lines: G is on the first space, Ab is on the second space, and Bb is on the third space.

Root = 8 (G#)

8:0

8:3

8:7

8:10

A musical staff in treble clef showing four notes. The first note is a whole rest. The second note is G# (sharp), the third is Ab (flat), the fourth is Bb (flat). The notes are positioned on the staff lines: G# is on the first space, Ab is on the second space, and Bb is on the third space.

Root = 8 (Ab)

8:0

8:3

8:7

8:10

A musical staff in treble clef showing four notes. The first note is a whole rest. The second note is Ab (flat), the third is Bb (flat), the fourth is C (natural). The notes are positioned on the staff lines: Ab is on the second space, Bb is on the third space, and C is on the first line.

Root = 9 (A)

9:0

9:3

9:7

9:10

A musical staff in treble clef showing four notes. The first note is a whole rest. The second note is Ab (flat), the third is Bb (flat), the fourth is C (natural). The notes are positioned on the staff lines: Ab is on the second space, Bb is on the third space, and C is on the first line.

Root = 10 (A#)

10:0

10:3

10:7

10:10

A musical staff in treble clef showing four notes. The first note is a whole rest. The second note is A# (sharp), the third is B (natural), the fourth is C (natural). The notes are positioned on the staff lines: A# is on the first space, B is on the second space, and C is on the first line.

Root = 10 (Bb)

10:0

10:3

10:7

10:10

A musical staff in treble clef showing four notes. The first note is a whole rest. The second note is Bb (flat), the third is C (natural), the fourth is D (natural). The notes are positioned on the staff lines: Bb is on the second space, C is on the third space, and D is on the first line.

Root = 11 (B)

11:0

11:3

11:7

11:10

A musical staff in treble clef showing four notes. The first note is a whole rest. The second note is Bb (flat), the third is C (natural), the fourth is D (natural). The notes are positioned on the staff lines: Bb is on the second space, C is on the third space, and D is on the first line.