

# Chord Type 0 3 5 10 in All Keys

Treble Clef, 4 Notes, Diamorphic Scale Degrees:1347

Stanley Jordan

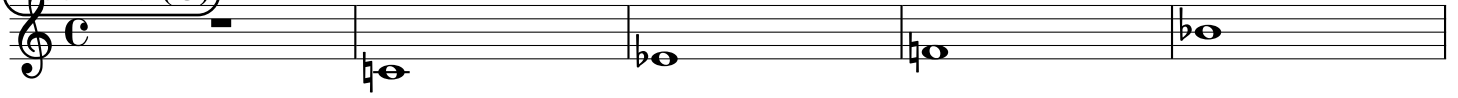
Root = 0 (C)

0:0

0:3

0:5

0:10



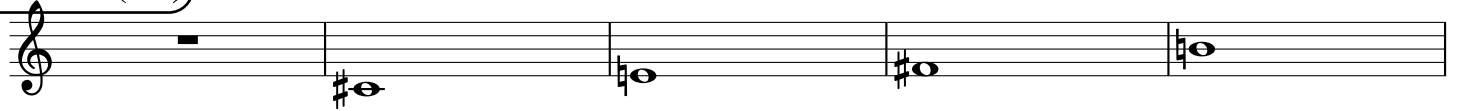
Root = 1 (C#)

1:0

1:3

1:5

1:10



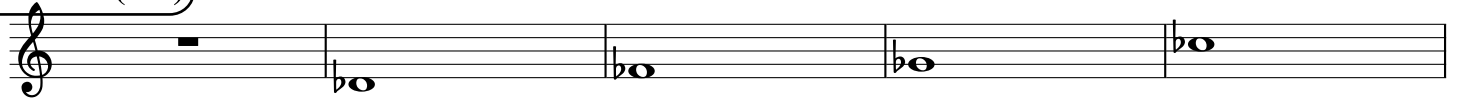
Root = 1 (Db)

1:0

1:3

1:5

1:10



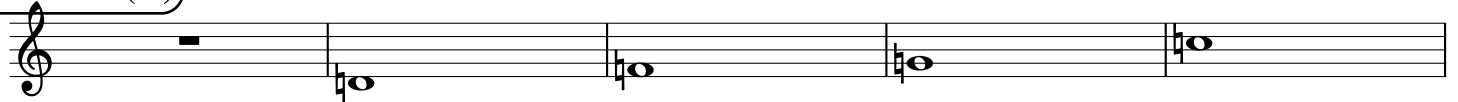
Root = 2 (D)

2:0

2:3

2:5

2:10



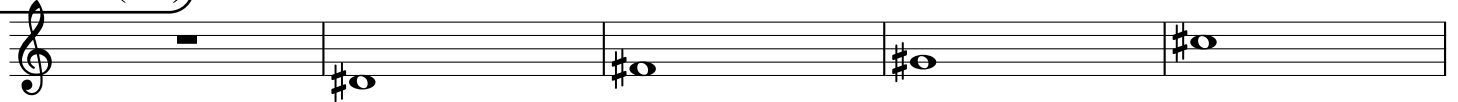
Root = 3 (D#)

3:0

3:3

3:5

3:10



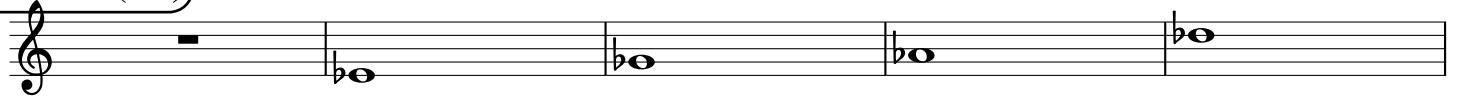
Root = 3 (Eb)

3:0

3:3

3:5

3:10



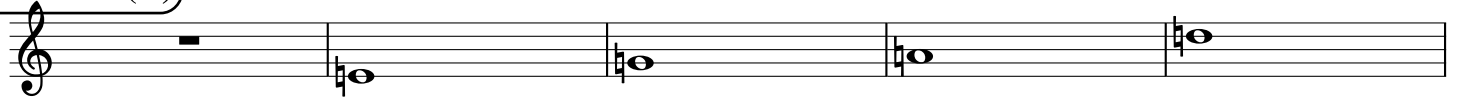
Root = 4 (E)

4:0

4:3

4:5

4:10



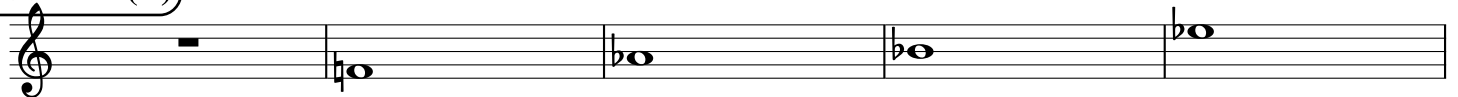
Root = 5 (F)

5:0

5:3

5:5

5:10



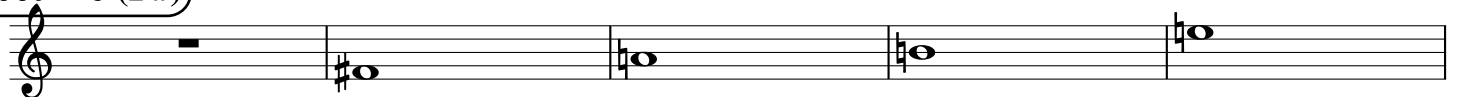
Root = 6 (F#)

6:0

6:3

6:5

6:10



Root = 6 (Gb)

6:0

6:3

6:5

6:10

A musical staff in treble clef showing four notes. The first note is a whole rest. The second note is Gb (flat), the third is Ab (flat), the fourth is Bb (flat), and the fifth is Cb (flat). The notes are positioned on the staff lines corresponding to the ratios 6:0, 6:3, 6:5, and 6:10.

Root = 7 (G)

7:0

7:3

7:5

7:10

A musical staff in treble clef showing four notes. The first note is a whole rest. The second note is G (natural), the third is Ab (flat), the fourth is Bb (flat), and the fifth is Cb (flat). The notes are positioned on the staff lines corresponding to the ratios 7:0, 7:3, 7:5, and 7:10.

Root = 8 (G#)

8:0

8:3

8:5

8:10

A musical staff in treble clef showing four notes. The first note is a whole rest. The second note is G# (sharp), the third is Ab (flat), the fourth is Bb (flat), and the fifth is Cb (flat). The notes are positioned on the staff lines corresponding to the ratios 8:0, 8:3, 8:5, and 8:10.

Root = 8 (Ab)

8:0

8:3

8:5

8:10

A musical staff in treble clef showing four notes. The first note is a whole rest. The second note is Ab (flat), the third is Bb (flat), the fourth is Cb (flat), and the fifth is Db (flat). The notes are positioned on the staff lines corresponding to the ratios 8:0, 8:3, 8:5, and 8:10.

Root = 9 (A)

9:0

9:3

9:5

9:10

A musical staff in treble clef showing four notes. The first note is a whole rest. The second note is A (natural), the third is Ab (flat), the fourth is Bb (flat), and the fifth is Cb (flat). The notes are positioned on the staff lines corresponding to the ratios 9:0, 9:3, 9:5, and 9:10.

Root = 10 (A#)

10:0

10:3

10:5

10:10

A musical staff in treble clef showing four notes. The first note is a whole rest. The second note is A# (sharp), the third is Ab (flat), the fourth is Bb (flat), and the fifth is Cb (flat). The notes are positioned on the staff lines corresponding to the ratios 10:0, 10:3, 10:5, and 10:10.

Root = 10 (Bb)

10:0

10:3

10:5

10:10

A musical staff in treble clef showing four notes. The first note is a whole rest. The second note is Bb (flat), the third is Cb (flat), the fourth is Db (flat), and the fifth is Eb (flat). The notes are positioned on the staff lines corresponding to the ratios 10:0, 10:3, 10:5, and 10:10.

Root = 11 (B)

11:0

11:3

11:5

11:10

A musical staff in treble clef showing four notes. The first note is a whole rest. The second note is B (natural), the third is Bb (flat), the fourth is Cb (flat), and the fifth is Db (flat). The notes are positioned on the staff lines corresponding to the ratios 11:0, 11:3, 11:5, and 11:10.