

Chord Type 0 3 5 6 in All Keys

Treble Clef, 4 Notes, Diatonic Scale Degrees: 1345

Stanley Jordan

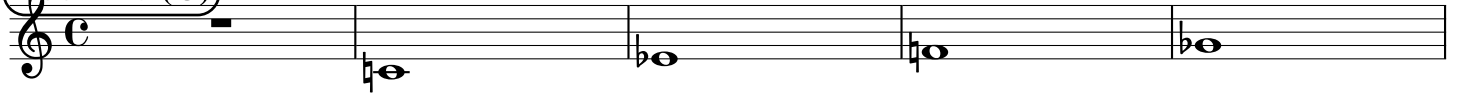
Root = 0 (C)

0:0

0:3

0:5

0:6



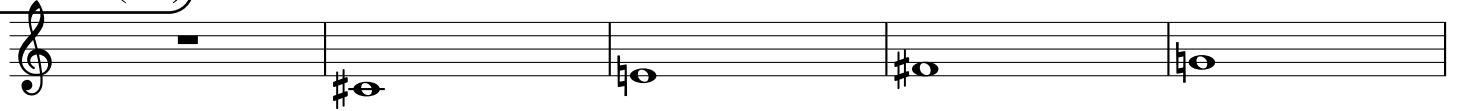
Root = 1 (C#)

1:0

1:3

1:5

1:6



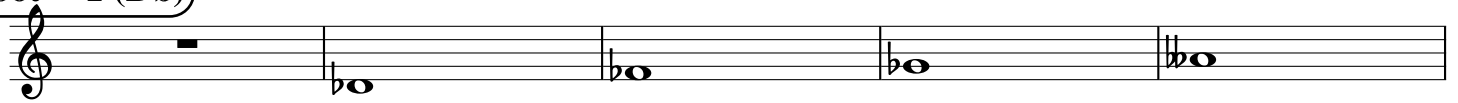
Root = 1 (Db)

1:0

1:3

1:5

1:6



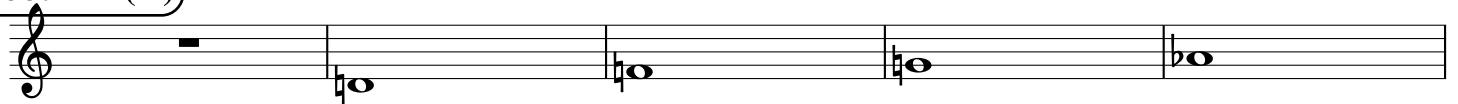
Root = 2 (D)

2:0

2:3

2:5

2:6



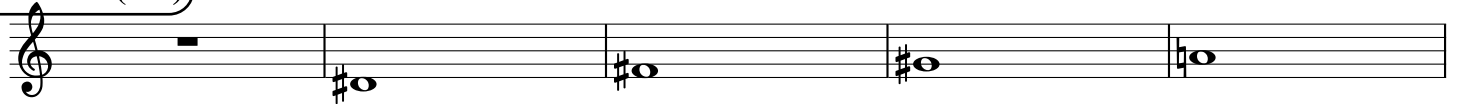
Root = 3 (D#)

3:0

3:3

3:5

3:6



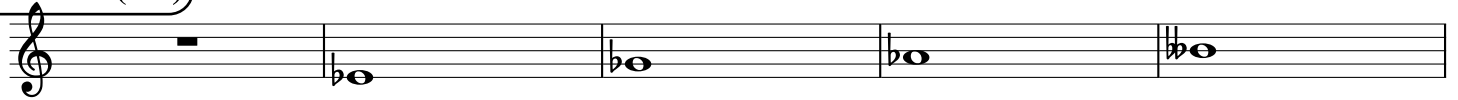
Root = 3 (Eb)

3:0

3:3

3:5

3:6



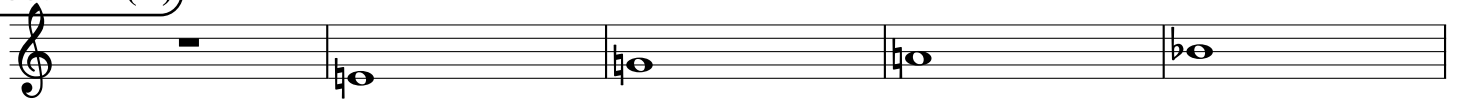
Root = 4 (E)

4:0

4:3

4:5

4:6



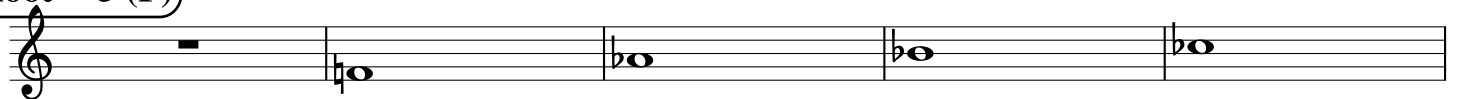
Root = 5 (F)

5:0

5:3

5:5

5:6



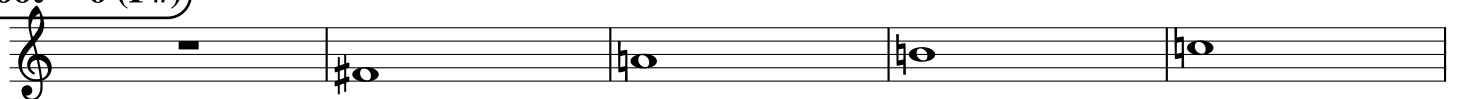
Root = 6 (F#)

6:0

6:3

6:5

6:6



Root = 6 (Gb)

6:0 6:3 6:5 6:6

A musical staff in treble clef showing four notes. The first note is a whole rest. The second note is Gb (flat), the third is Ab (flat), the fourth is Bb (flat), and the fifth is Cb (flat).

Root = 7 (G)

7:0 7:3 7:5 7:6

A musical staff in treble clef showing four notes. The first note is a whole rest. The second note is G (natural), the third is Ab (flat), the fourth is Bb (flat), and the fifth is Cb (flat).

Root = 8 (G#)

8:0 8:3 8:5 8:6

A musical staff in treble clef showing four notes. The first note is a whole rest. The second note is G# (sharp), the third is Ab (flat), the fourth is Bb (flat), and the fifth is Cb (flat).

Root = 8 (Ab)

8:0 8:3 8:5 8:6

A musical staff in treble clef showing four notes. The first note is a whole rest. The second note is Ab (flat), the third is Bb (flat), the fourth is Cb (flat), and the fifth is Db (flat).

Root = 9 (A)

9:0 9:3 9:5 9:6

A musical staff in treble clef showing four notes. The first note is a whole rest. The second note is A (natural), the third is Bb (flat), the fourth is Cb (flat), and the fifth is Db (flat).

Root = 10 (A#)

10:0 10:3 10:5 10:6

A musical staff in treble clef showing four notes. The first note is a whole rest. The second note is A# (sharp), the third is B (natural), the fourth is C (natural), and the fifth is D (natural).

Root = 10 (Bb)

10:0 10:3 10:5 10:6

A musical staff in treble clef showing four notes. The first note is a whole rest. The second note is Bb (flat), the third is C (natural), the fourth is D (natural), and the fifth is Eb (flat).

Root = 11 (B)

11:0 11:3 11:5 11:6

A musical staff in treble clef showing four notes. The first note is a whole rest. The second note is B (natural), the third is C (natural), the fourth is D (natural), and the fifth is E (natural). The staff ends with a double bar line.