

Chord Type 0 3 4 10 in All Keys

Treble Clef, 4 Notes, Diamorphic Scale Degrees:1237

Stanley Jordan

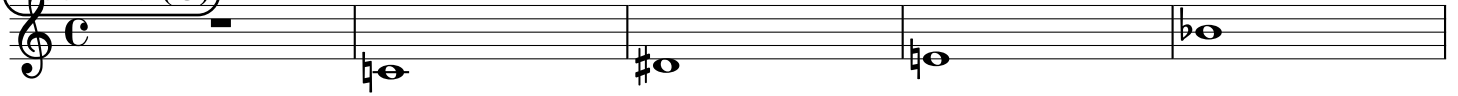
Root = 0 (C)

0:0

0:3

0:4

0:10



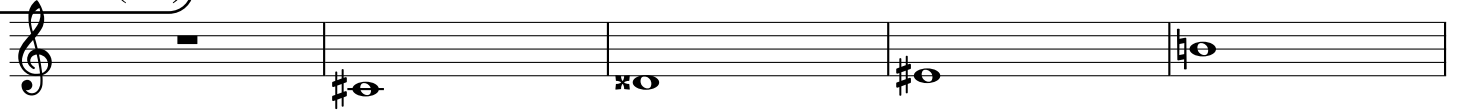
Root = 1 (C#)

1:0

1:3

1:4

1:10



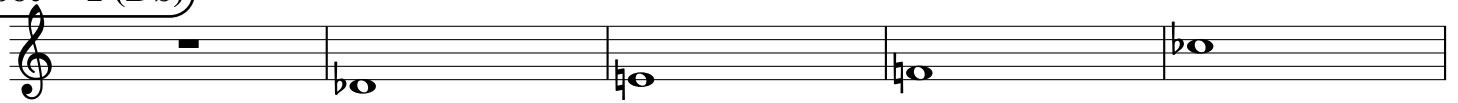
Root = 1 (Db)

1:0

1:3

1:4

1:10



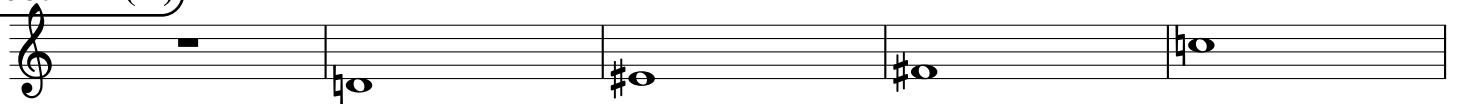
Root = 2 (D)

2:0

2:3

2:4

2:10



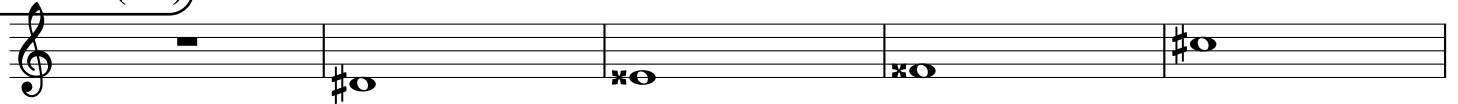
Root = 3 (D#)

3:0

3:3

3:4

3:10



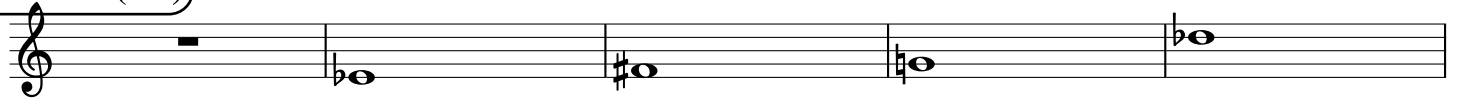
Root = 3 (Eb)

3:0

3:3

3:4

3:10



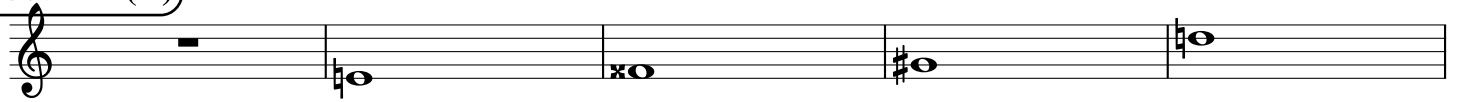
Root = 4 (E)

4:0

4:3

4:4

4:10



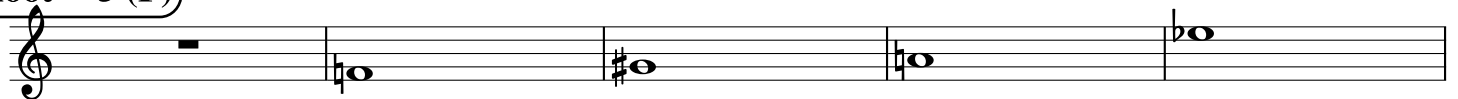
Root = 5 (F)

5:0

5:3

5:4

5:10



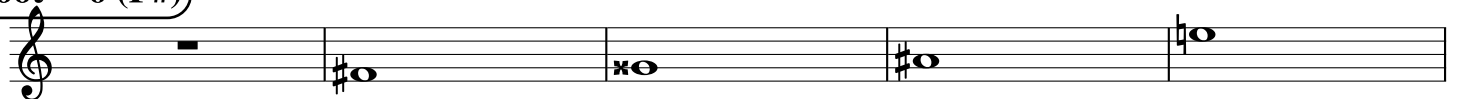
Root = 6 (F#)

6:0

6:3

6:4

6:10



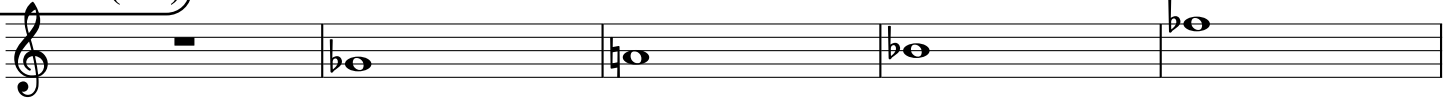
Root = 6 (Gb)

6:0

6:3

6:4

6:10



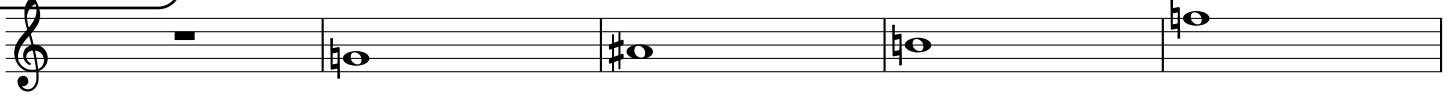
Root = 7 (G)

7:0

7:3

7:4

7:10



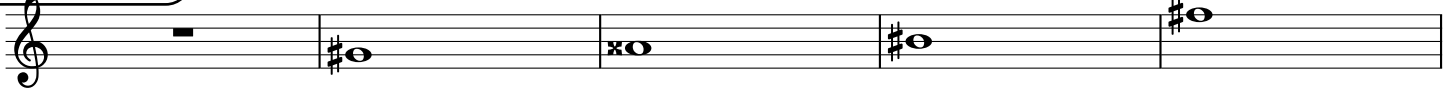
Root = 8 (G#)

8:0

8:3

8:4

8:10



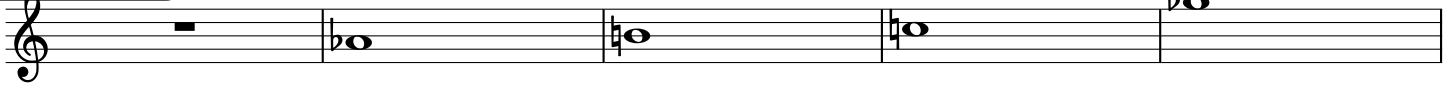
Root = 8 (Ab)

8:0

8:3

8:4

8:10



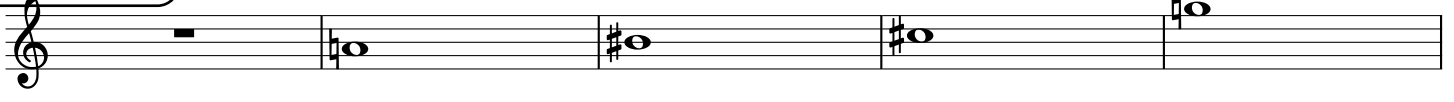
Root = 9 (A)

9:0

9:3

9:4

9:10



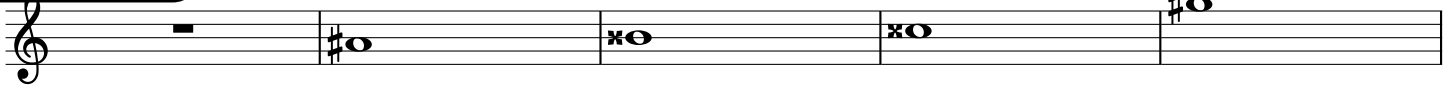
Root = 10 (A#)

10:0

10:3

10:4

10:10



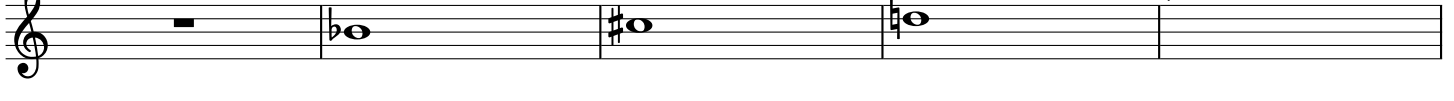
Root = 10 (Bb)

10:0

10:3

10:4

10:10



Root = 11 (B)

11:0

11:3

11:4

11:10

