

Chord Type 0 2 10 11 in All Keys

Treble Clef, 4 Notes, Diamorphic Scale Degrees:1267

Stanley Jordan

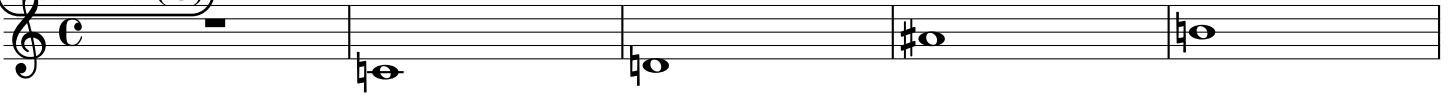
Root = 0 (C)

0:0

0:2

0:10

0:11



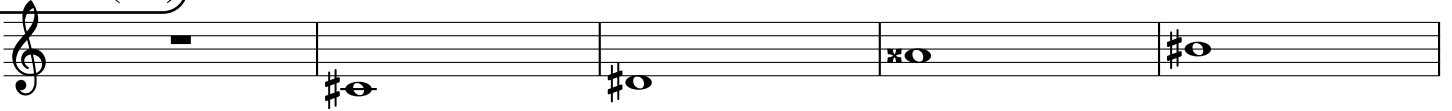
Root = 1 (C#)

1:0

1:2

1:10

1:11



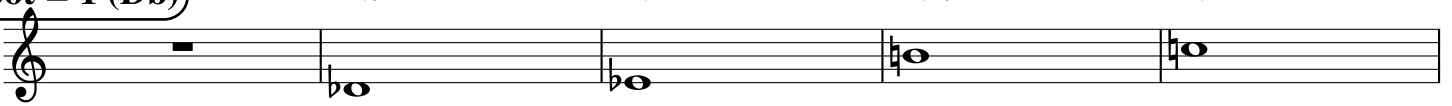
Root = 1 (Db)

1:0

1:2

1:10

1:11



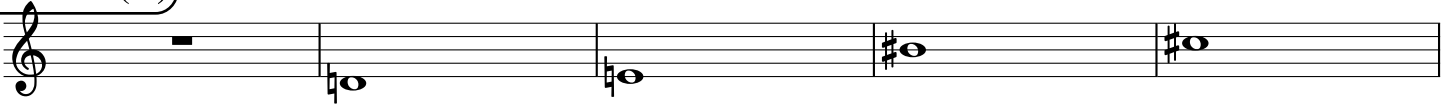
Root = 2 (D)

2:0

2:2

2:10

2:11



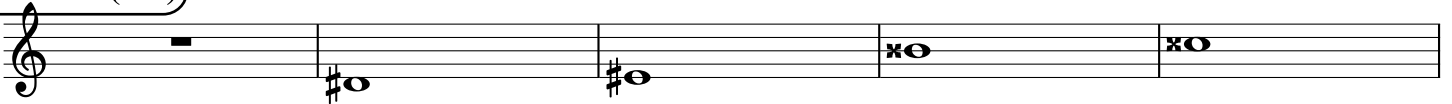
Root = 3 (D#)

3:0

3:2

3:10

3:11



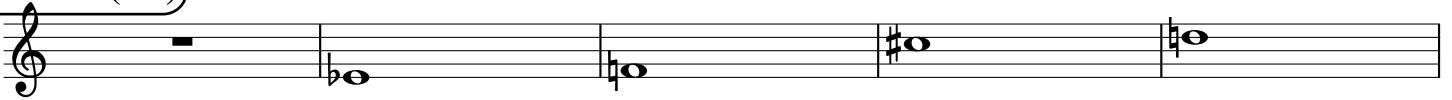
Root = 3 (Eb)

3:0

3:2

3:10

3:11



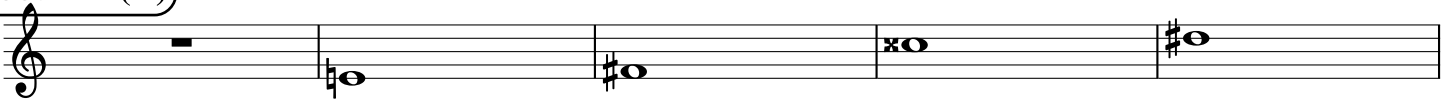
Root = 4 (E)

4:0

4:2

4:10

4:11



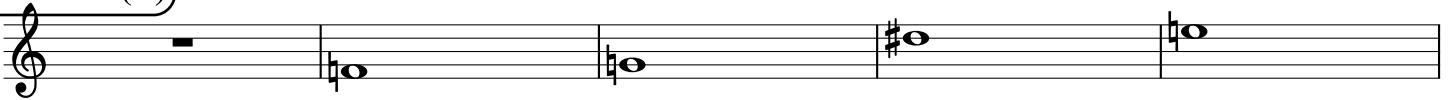
Root = 5 (F)

5:0

5:2

5:10

5:11



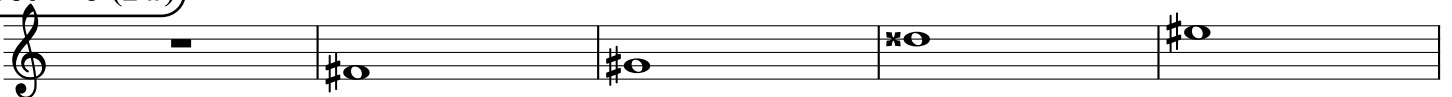
Root = 6 (F#)

6:0

6:2

6:10

6:11



Root = 6 (Gb)

6:0

6:2

6:10

6:11

A musical staff in treble clef showing four notes. The first note is a whole rest. The second note is Gb (flat), corresponding to ratio 6:0. The third note is Gb (flat), corresponding to ratio 6:2. The fourth note is Gb (flat), corresponding to ratio 6:10. The fifth note is Gb (flat), corresponding to ratio 6:11.

Root = 7 (G)

7:0

7:2

7:10

7:11

A musical staff in treble clef showing four notes. The first note is a whole rest. The second note is G (natural), corresponding to ratio 7:0. The third note is G (natural), corresponding to ratio 7:2. The fourth note is G (natural), corresponding to ratio 7:10. The fifth note is G (natural), corresponding to ratio 7:11.

Root = 8 (G#)

8:0

8:2

8:10

8:11

A musical staff in treble clef showing four notes. The first note is a whole rest. The second note is G# (sharp), corresponding to ratio 8:0. The third note is G# (sharp), corresponding to ratio 8:2. The fourth note is G# (sharp), corresponding to ratio 8:10. The fifth note is G# (sharp), corresponding to ratio 8:11.

Root = 8 (Ab)

8:0

8:2

8:10

8:11

A musical staff in treble clef showing four notes. The first note is a whole rest. The second note is Ab (flat), corresponding to ratio 8:0. The third note is Ab (flat), corresponding to ratio 8:2. The fourth note is Ab (flat), corresponding to ratio 8:10. The fifth note is Ab (flat), corresponding to ratio 8:11.

Root = 9 (A)

9:0

9:2

9:10

9:11

A musical staff in treble clef showing four notes. The first note is a whole rest. The second note is A (natural), corresponding to ratio 9:0. The third note is A (natural), corresponding to ratio 9:2. The fourth note is A (natural), corresponding to ratio 9:10. The fifth note is A (natural), corresponding to ratio 9:11.

Root = 10 (A#)

10:0

10:2

10:10

10:11

A musical staff in treble clef showing four notes. The first note is a whole rest. The second note is A# (sharp), corresponding to ratio 10:0. The third note is A# (sharp), corresponding to ratio 10:2. The fourth note is A# (sharp), corresponding to ratio 10:10. The fifth note is A# (sharp), corresponding to ratio 10:11.

Root = 10 (Bb)

10:0

10:2

10:10

10:11

A musical staff in treble clef showing four notes. The first note is a whole rest. The second note is Bb (flat), corresponding to ratio 10:0. The third note is Bb (flat), corresponding to ratio 10:2. The fourth note is Bb (flat), corresponding to ratio 10:10. The fifth note is Bb (flat), corresponding to ratio 10:11.

Root = 11 (B)

11:0

11:2

11:10

11:11

A musical staff in treble clef showing four notes. The first note is a whole rest. The second note is B (natural), corresponding to ratio 11:0. The third note is B (natural), corresponding to ratio 11:2. The fourth note is B (natural), corresponding to ratio 11:10. The fifth note is B (natural), corresponding to ratio 11:11.