

# Chord Type 0 2 7 9 in All Keys

Treble Clef, 4 Notes, Diamorphic Scale Degrees:1256

Stanley Jordan

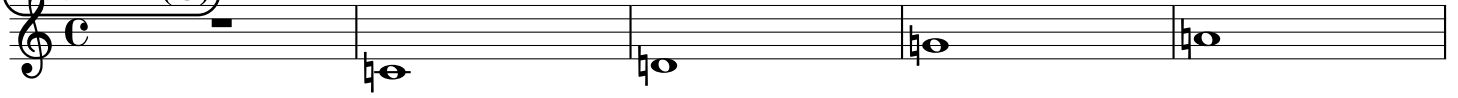
Root = 0 (C)

0:0

0:2

0:7

0:9



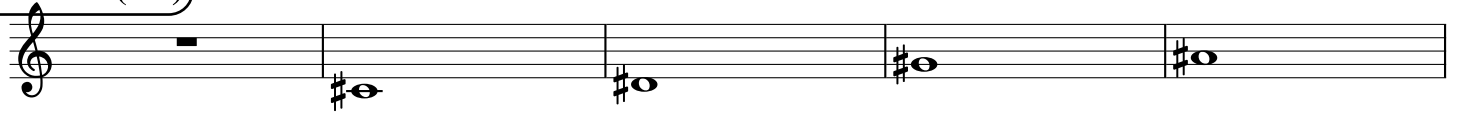
Root = 1 (C#)

1:0

1:2

1:7

1:9



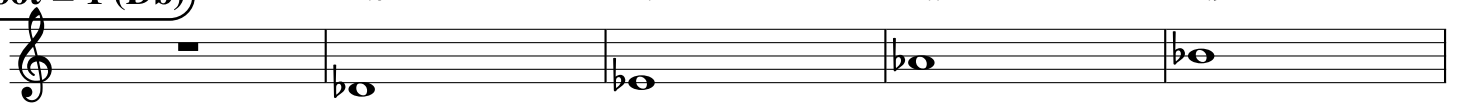
Root = 1 (Db)

1:0

1:2

1:7

1:9



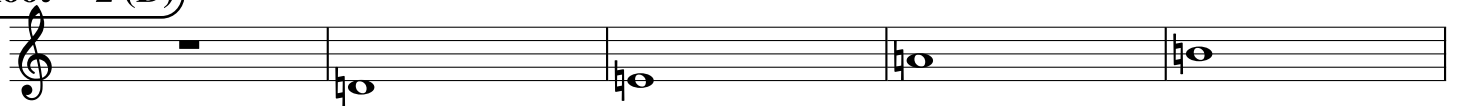
Root = 2 (D)

2:0

2:2

2:7

2:9



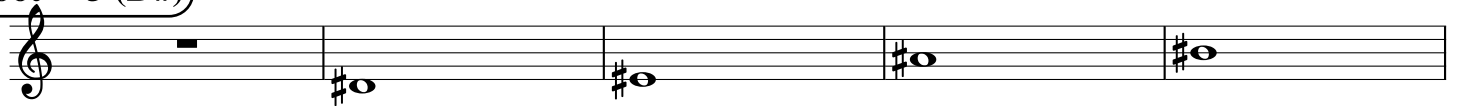
Root = 3 (D#)

3:0

3:2

3:7

3:9



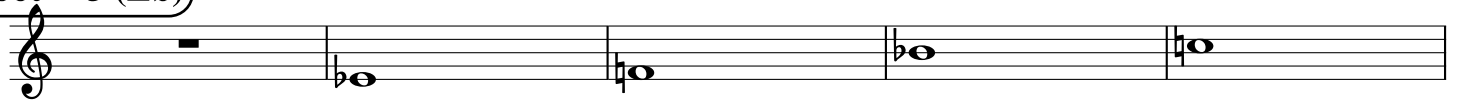
Root = 3 (Eb)

3:0

3:2

3:7

3:9



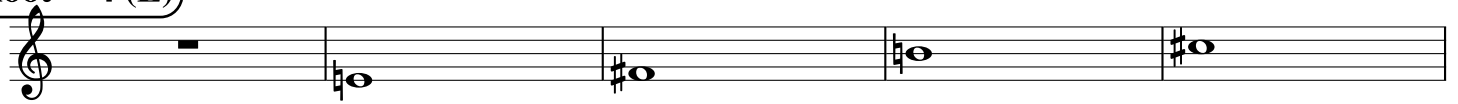
Root = 4 (E)

4:0

4:2

4:7

4:9



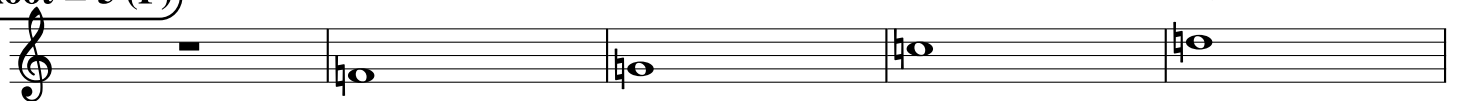
Root = 5 (F)

5:0

5:2

5:7

5:9



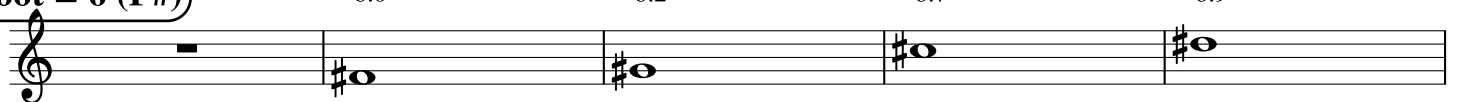
Root = 6 (F#)

6:0

6:2

6:7

6:9



**Root = 6 (Gb)**

6:0                      6:2                      6:7                      6:9

A musical staff in treble clef showing four notes. The first note is a whole rest. The second note is Gb (6:0). The third note is Ab (6:2). The fourth note is Bb (6:7). The fifth note is Cb (6:9).

**Root = 7 (G)**

7:0                      7:2                      7:7                      7:9

A musical staff in treble clef showing four notes. The first note is a whole rest. The second note is G (7:0). The third note is Ab (7:2). The fourth note is Bb (7:7). The fifth note is Cb (7:9).

**Root = 8 (G#)**

8:0                      8:2                      8:7                      8:9

A musical staff in treble clef showing four notes. The first note is a whole rest. The second note is G# (8:0). The third note is Ab (8:2). The fourth note is Bb (8:7). The fifth note is Cb (8:9).

**Root = 8 (Ab)**

8:0                      8:2                      8:7                      8:9

A musical staff in treble clef showing four notes. The first note is a whole rest. The second note is Ab (8:0). The third note is Bb (8:2). The fourth note is Cb (8:7). The fifth note is Db (8:9).

**Root = 9 (A)**

9:0                      9:2                      9:7                      9:9

A musical staff in treble clef showing four notes. The first note is a whole rest. The second note is A (9:0). The third note is Bb (9:2). The fourth note is Cb (9:7). The fifth note is Db (9:9).

**Root = 10 (A#)**

10:0                      10:2                      10:7                      10:9

A musical staff in treble clef showing four notes. The first note is a whole rest. The second note is A# (10:0). The third note is Bb (10:2). The fourth note is Cb (10:7). The fifth note is Db (10:9).

**Root = 10 (Bb)**

10:0                      10:2                      10:7                      10:9

A musical staff in treble clef showing four notes. The first note is a whole rest. The second note is Bb (10:0). The third note is Cb (10:2). The fourth note is Db (10:7). The fifth note is Eb (10:9).

**Root = 11 (B)**

11:0                      11:2                      11:7                      11:9

A musical staff in treble clef showing four notes. The first note is a whole rest. The second note is B (11:0). The third note is Cb (11:2). The fourth note is Db (11:7). The fifth note is Eb (11:9).