

# Chord Type 0 2 4 7 in All Keys

Treble Clef, 4 Notes, Diatonic Scale Degrees: 1235

Stanley Jordan

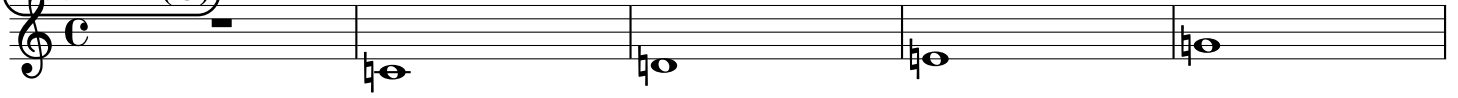
Root = 0 (C)

0:0

0:2

0:4

0:7



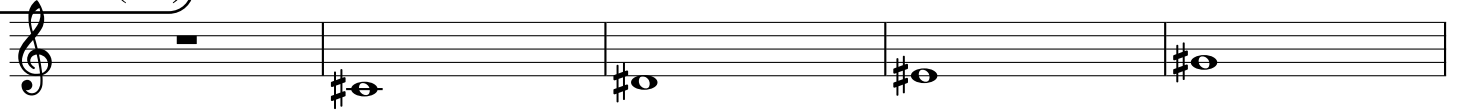
Root = 1 (C#)

1:0

1:2

1:4

1:7



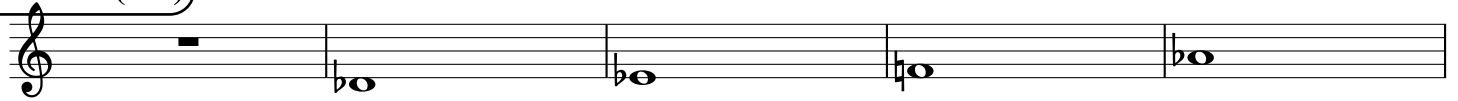
Root = 1 (Db)

1:0

1:2

1:4

1:7



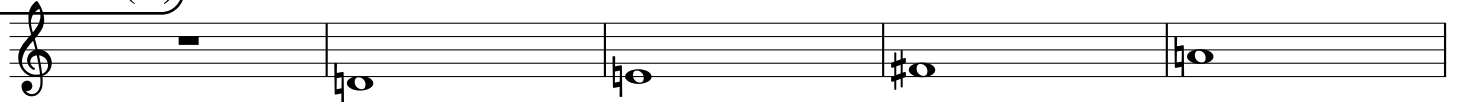
Root = 2 (D)

2:0

2:2

2:4

2:7



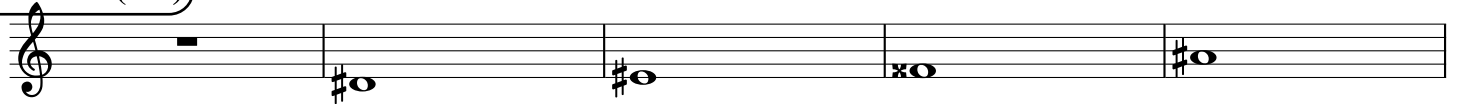
Root = 3 (D#)

3:0

3:2

3:4

3:7



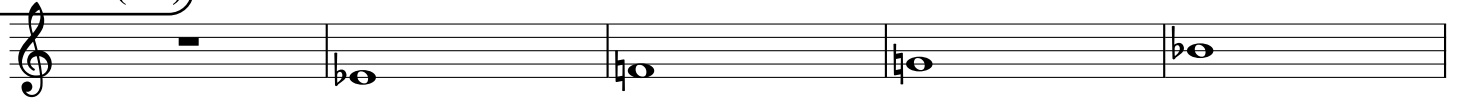
Root = 3 (Eb)

3:0

3:2

3:4

3:7



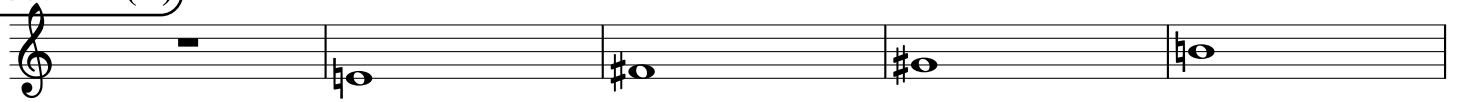
Root = 4 (E)

4:0

4:2

4:4

4:7



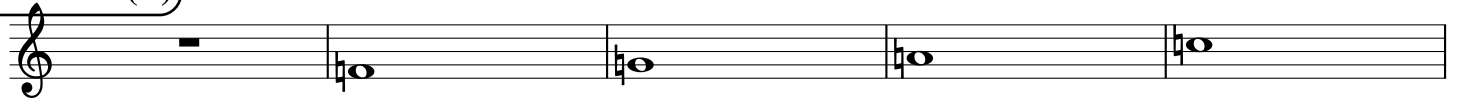
Root = 5 (F)

5:0

5:2

5:4

5:7



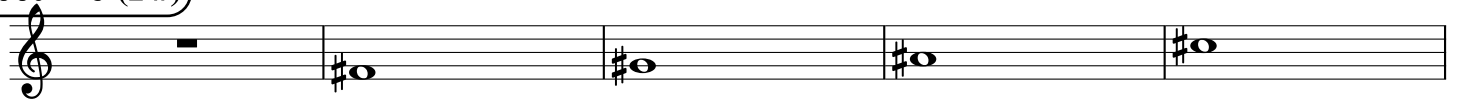
Root = 6 (F#)

6:0

6:2

6:4

6:7



**Root = 6 (Gb)**

6:0                      6:2                      6:4                      6:7

A musical staff in treble clef showing four notes. The first note is a whole rest. The second note is Gb (flat), the third is Gb (flat), the fourth is Gb (flat), and the fifth is Gb (flat).

**Root = 7 (G)**

7:0                      7:2                      7:4                      7:7

A musical staff in treble clef showing four notes. The first note is a whole rest. The second note is G (natural), the third is G (natural), the fourth is G (natural), and the fifth is G (natural).

**Root = 8 (G#)**

8:0                      8:2                      8:4                      8:7

A musical staff in treble clef showing four notes. The first note is a whole rest. The second note is G# (sharp), the third is G# (sharp), the fourth is G# (sharp), and the fifth is G# (sharp).

**Root = 8 (Ab)**

8:0                      8:2                      8:4                      8:7

A musical staff in treble clef showing four notes. The first note is a whole rest. The second note is Ab (flat), the third is Ab (flat), the fourth is Ab (flat), and the fifth is Ab (flat).

**Root = 9 (A)**

9:0                      9:2                      9:4                      9:7

A musical staff in treble clef showing four notes. The first note is a whole rest. The second note is A (natural), the third is A (natural), the fourth is A (natural), and the fifth is A (natural).

**Root = 10 (A#)**

10:0                      10:2                      10:4                      10:7

A musical staff in treble clef showing four notes. The first note is a whole rest. The second note is A# (sharp), the third is A# (sharp), the fourth is A# (sharp), and the fifth is A# (sharp).

**Root = 10 (Bb)**

10:0                      10:2                      10:4                      10:7

A musical staff in treble clef showing four notes. The first note is a whole rest. The second note is Bb (flat), the third is Bb (flat), the fourth is Bb (flat), and the fifth is Bb (flat).

**Root = 11 (B)**

11:0                      11:2                      11:4                      11:7

A musical staff in treble clef showing four notes. The first note is a whole rest. The second note is B (natural), the third is B (natural), the fourth is B (natural), and the fifth is B (natural).