

Chord Type 0 2 3 11 in All Keys

Treble Clef, 4 Notes, Diamorphic Scale Degrees:1237

Stanley Jordan

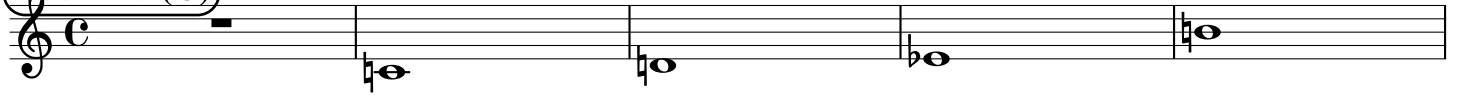
Root = 0 (C)

0:0

0:2

0:3

0:11



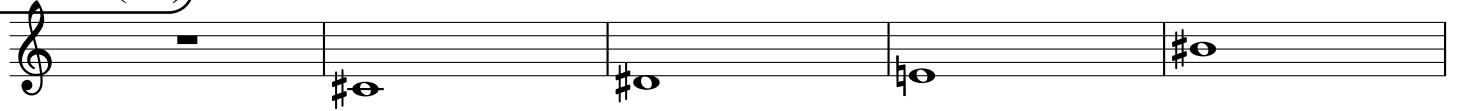
Root = 1 (C#)

1:0

1:2

1:3

1:11



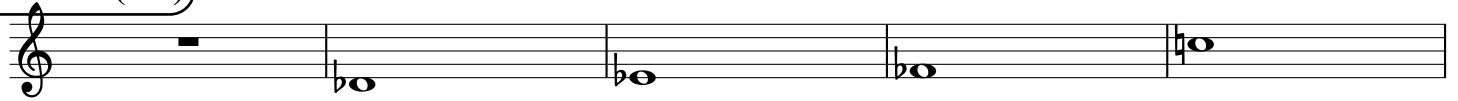
Root = 1 (Db)

1:0

1:2

1:3

1:11



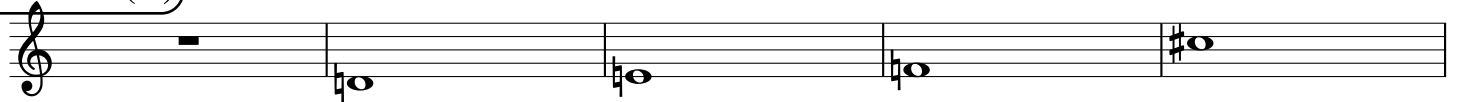
Root = 2 (D)

2:0

2:2

2:3

2:11



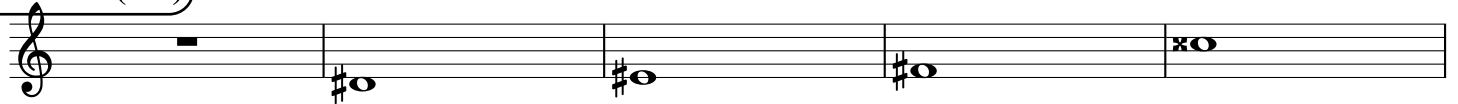
Root = 3 (D#)

3:0

3:2

3:3

3:11



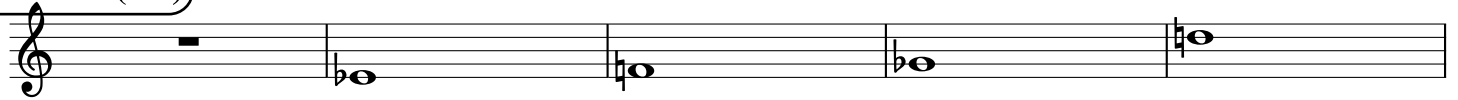
Root = 3 (Eb)

3:0

3:2

3:3

3:11



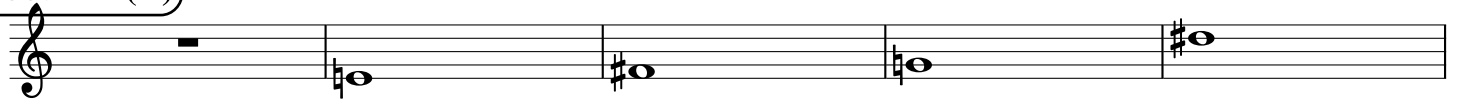
Root = 4 (E)

4:0

4:2

4:3

4:11



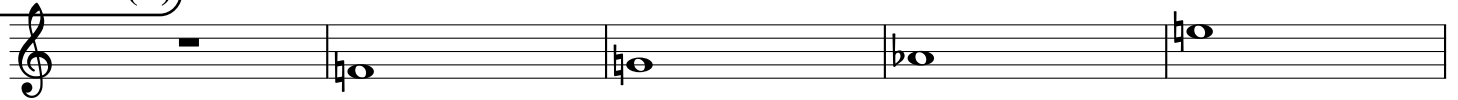
Root = 5 (F)

5:0

5:2

5:3

5:11



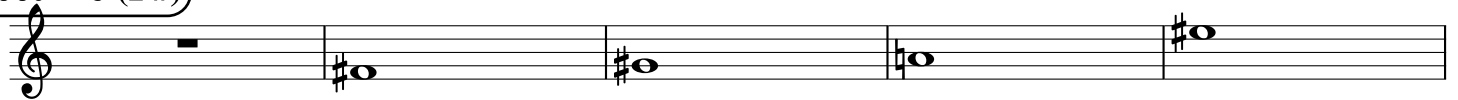
Root = 6 (F#)

6:0

6:2

6:3

6:11



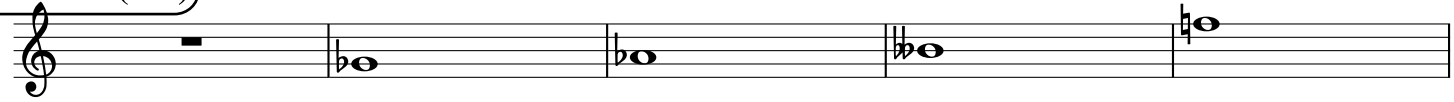
Root = 6 (Gb)

6:0

6:2

6:3

6:11



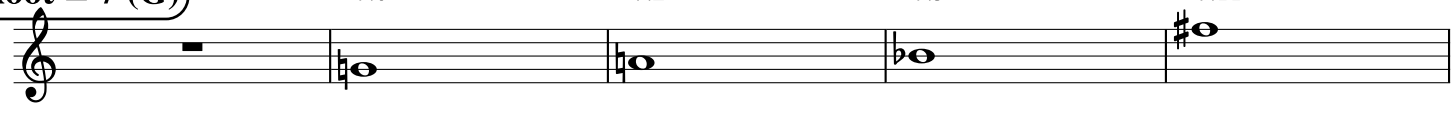
Root = 7 (G)

7:0

7:2

7:3

7:11



Root = 8 (G#)

8:0

8:2

8:3

8:11



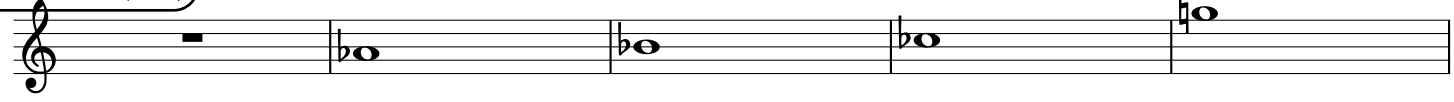
Root = 8 (Ab)

8:0

8:2

8:3

8:11



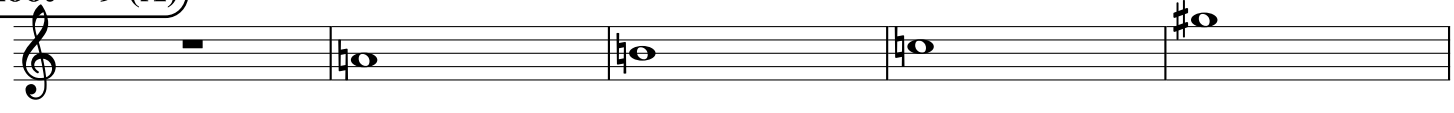
Root = 9 (A)

9:0

9:2

9:3

9:11



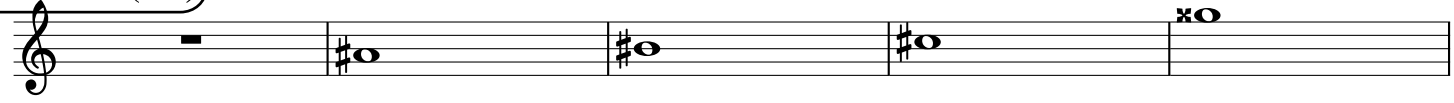
Root = 10 (A#)

10:0

10:2

10:3

10:11



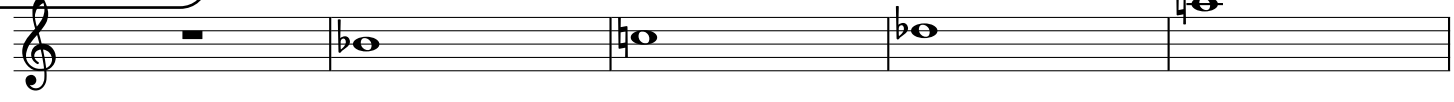
Root = 10 (Bb)

10:0

10:2

10:3

10:11



Root = 11 (B)

11:0

11:2

11:3

11:11

